

# OLD SPACES NEW PLACES RUSHTON & MACKIE STREETS COST OPTIONS

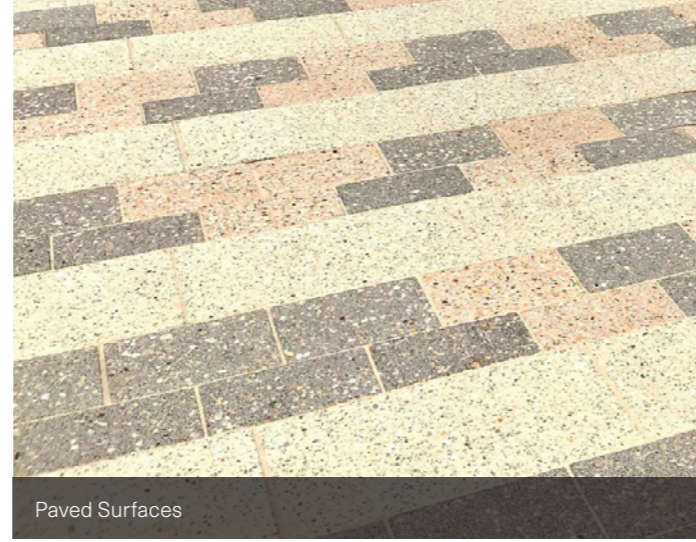
---

To be read in conjunction with WT partnership (Quantity Surveyor) Indicative Order of Cost Estimate.

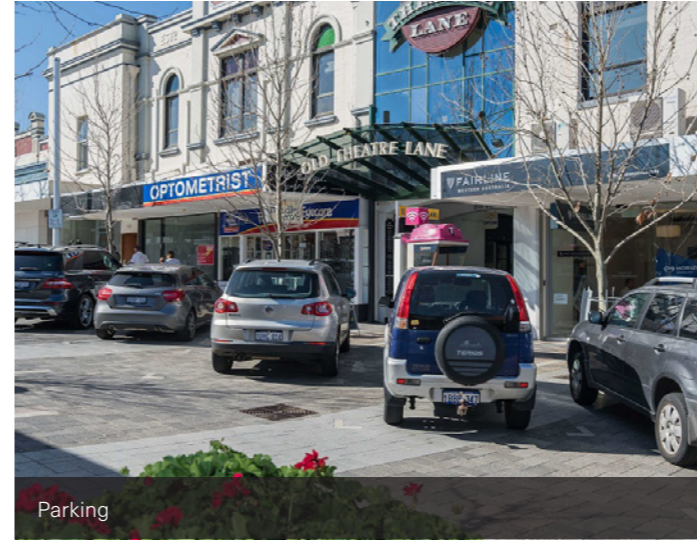
# Amenity Provided in All Options



Alfresco



Paved Surfaces



Parking



Street Events



Parklets & Outdoor Lounges



Street Performances



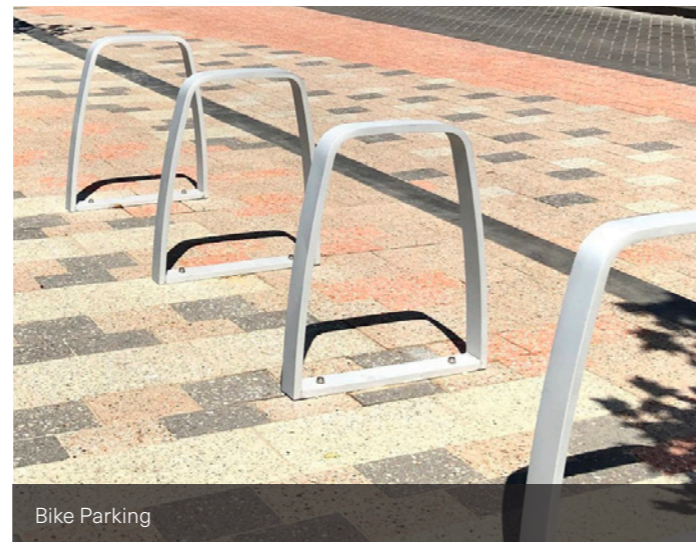
Raised Intersection



Narrowed Road Widths



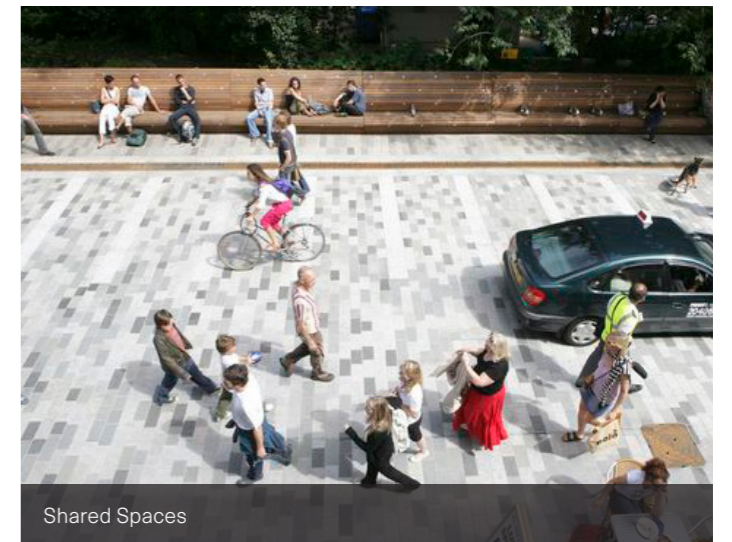
Verge Rain-gardens



Bike Parking



Street Trees



Shared Spaces

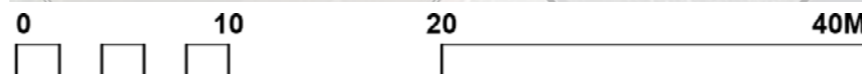
# High Level Option (A)

| CODE   | ITEM                      | SELECTION/COST                      | ITEM COST | SUB TOTAL          |
|--|---------------------------|-------------------------------------|-----------|--------------------|
| 1.0  | DEMOLITION                |                                     |           | 100,940            |
| 2.0  | EARTHWORKS                |                                     |           | 62,560             |
| 3.0  | HARD LANDSCAPING SURFACES |                                     |           | 1,404,270          |
| 3.1  | Road Paving*              | Natural Stone Cobble                | 628,200   |                    |
| 3.2  | Verge Paving              | Urban Stone (Engineered Stone)      | 160,920   |                    |
| 3.3  | Kerbs                     | Granite                             | 103,600   |                    |
|  | FURNITURE                 |                                     |           |                    |
| 3.4  | Fixed Furniture           | Concrete with timber batten         | 164,000   |                    |
| 3.5  | Bollards                  | Automated                           | 205,000   |                    |
|  | MISCELLANEOUS             |                                     |           |                    |
| 3.6  | Stage & Canopy            | Included                            | 20,000    |                    |
| 3.7  | Corner Artworks           | Included                            | 90,000    |                    |
| 4.0  | SOFT LANDSCAPING          |                                     |           | 144,400            |
| 4.1  | Trees                     | 500L Nursery Stock                  | 44,800    |                    |
| 5.0  | ELECTRICAL                |                                     |           | 945,300            |
| 5.1  | Feature Lighting          | Catenary Lighting (including poles) | 836,000   |                    |
| 6.0  | HYDRAULIC                 |                                     |           | 133,500            |
| <b>TOTAL incl Prelims, Traffic Mgt Marking and Contingency</b> |                           |                                     |           | <b>\$3,577,577</b> |

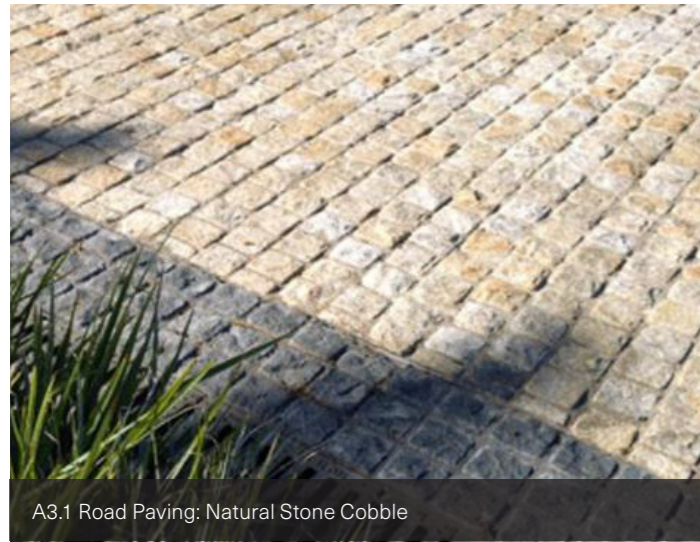
Note:

The tables above provide a high level summary to highlight the differences between Options A, B & C.

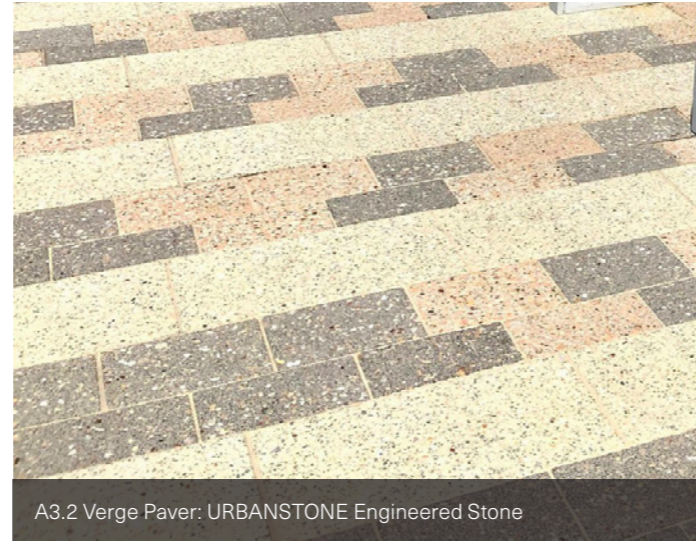
For detailed breakdown and the comprehensive list of items and associated costs, refer to WT partnership Report.



# High Level Option (A)



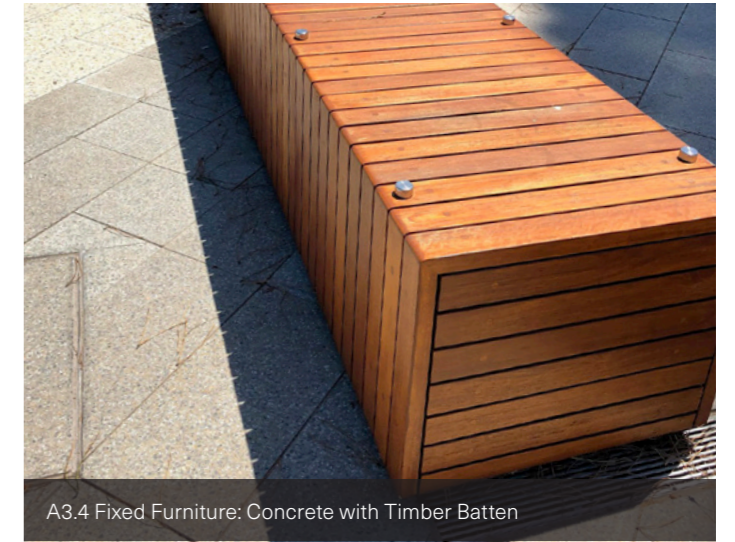
A3.1 Road Paving: Natural Stone Cobble



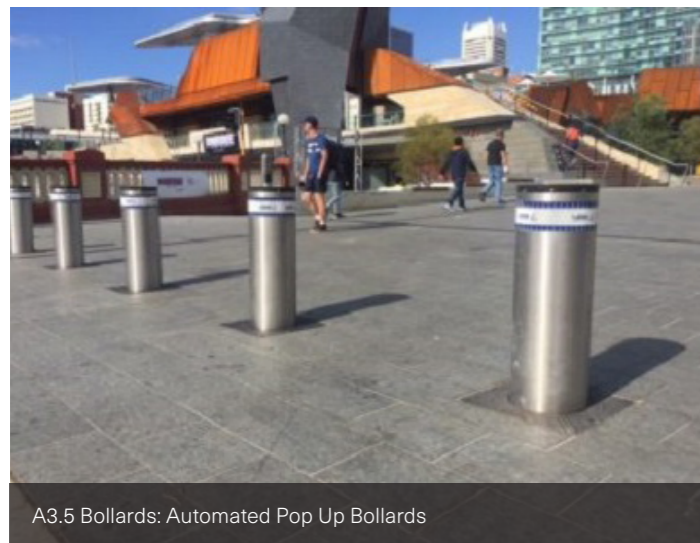
A3.2 Verge Paver: URBANSTONE Engineered Stone



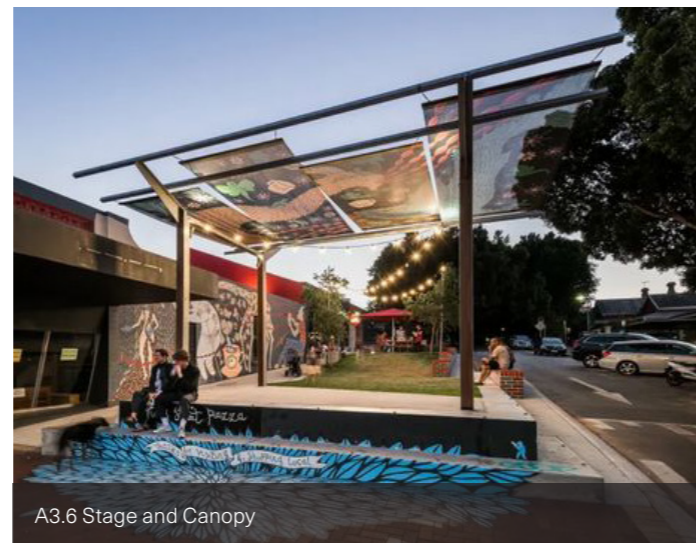
A3.3 Kerbs: Natural Stone - Granite



A3.4 Fixed Furniture: Concrete with Timber Batten



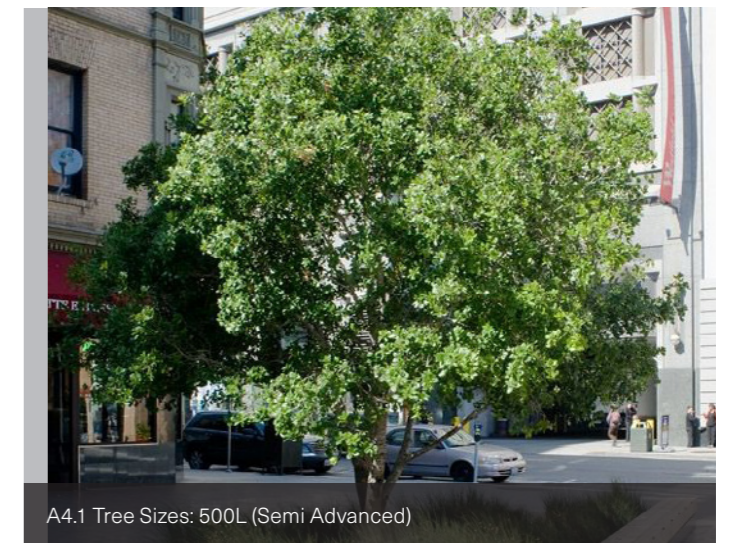
A3.5 Bollards: Automated Pop Up Bollards



A3.6 Stage and Canopy



A3.7 Corner Artworks



A4.1 Tree Sizes: 500L (Semi Advanced)



A5.1 Feature Lighting: Catenary Lighting (Including Poles)

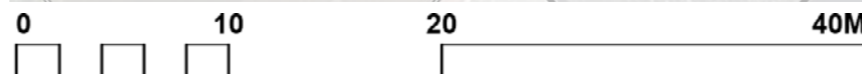
# Medium Level Option (B)

| CODE   | ITEM                 | SELECTION/COST                      | ITEM COST | SUB TOTAL          |
|--|----------------------|-------------------------------------|-----------|--------------------|
| 1.0  | DEMOLITION           |                                     |           | 100,940            |
| 2.0  | EARTHWORKS           |                                     |           | 62,560             |
| 3.0  | HARD LANDSCAPING     |                                     |           | 474,390            |
|  | <b>SURFACES</b>      |                                     |           |                    |
| 3.1  | Road Paving          | Interlocking Road Pavers            | 146,580   |                    |
| 3.2  | Verge Paving         | Urban Stone (Engineered Stone)      | 160,920   |                    |
| 3.3  | Kerbs                | Insitu Concrete                     | 19,240    |                    |
|  | <b>FURNITURE</b>     |                                     |           |                    |
| 3.4  | Fixed Furniture      | Concrete seating walls              | 33,600    |                    |
| 3.5  | Bollards             | Manual                              | 61,500    |                    |
|  | <b>MISCELLANEOUS</b> |                                     |           |                    |
| 3.6  | Stage & Canopy       | Included                            | 20,000    |                    |
| 3.7  | Corner Artworks      | Excluded                            | -         |                    |
| 4.0  | SOFT LANDSCAPING     |                                     |           | 75,600             |
| 4.1  | Trees                | 200L Nursery Stock                  | 36,000    |                    |
| 5.0  | ELECTRICAL           |                                     |           | 945,300            |
| 5.1  | Feature Lighting     | Catenary Lighting (including poles) | 836,000   |                    |
| 6.0  | HYDRAULIC            |                                     |           | 133,500            |
| <b>TOTAL incl Prelims, Traffic Mgt Marking and Contingency</b> |                      |                                     |           | <b>\$2,297,429</b> |

Note:

The tables above provide a high level summary to highlight the differences between Options A, B & C.

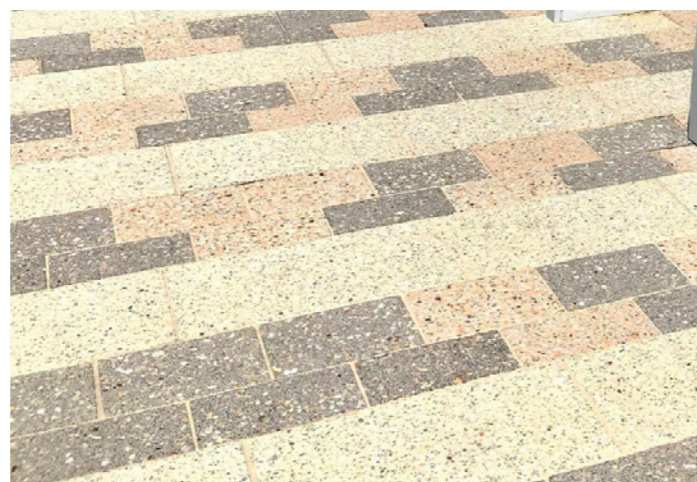
For detailed breakdown and the comprehensive list of items and associated costs, refer to WT partnership Report.



# Medium Level Option (B)



B3.1 Road Paving: Interlocking Road Paver



B3.2 Verge Paver: URBANSTONE Engineered Stone



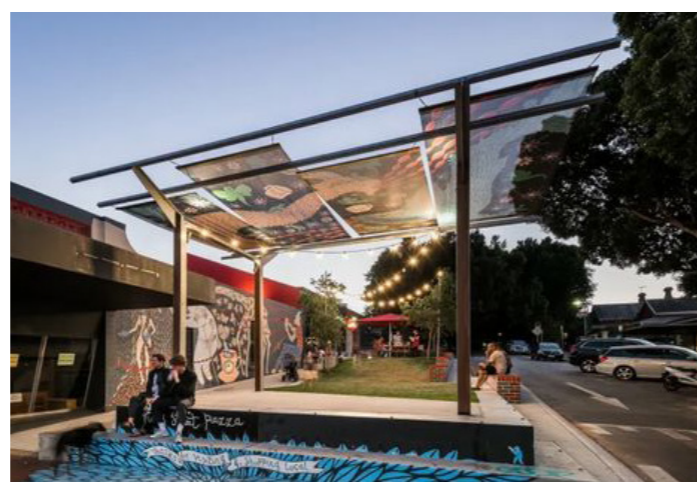
B3.3 Kerbs: Insitu Concrete



B3.4 Fixed Furniture: Concrete Seating Walls



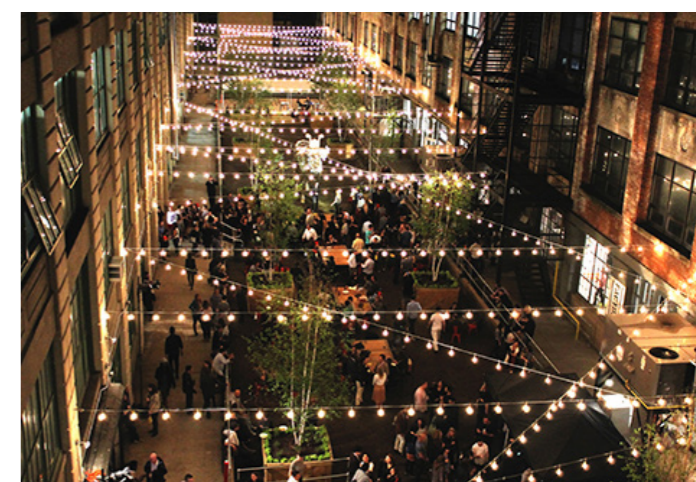
B3.5 Bollards: Automated Pop Up Bollards



B3.6 Stage and Canopy



B4.1 Tree Sizes: 200L

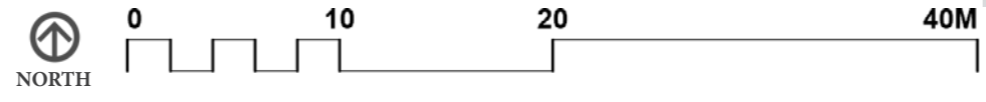


B5.1 Feature Lighting: Catarney Lighting (Including Poles)

# Lower Level Option (C)

| CODE   | ITEM                      | SELECTION/COST                 | ITEM COST | SUB TOTAL          |
|--|---------------------------|--------------------------------|-----------|--------------------|
| 1.0  | DEMOLITION                |                                |           | 100,940            |
| 2.0  | EARTHWORKS                |                                |           | 62,560             |
| 3.0  | HARD LANDSCAPING SURFACES |                                |           | 435,230            |
| 3.1  | Road Paving               | Interlocking Road Pavers       | 146,580   |                    |
| 3.2  | Verge Paving              | Urban Stone (Engineered Stone) | 160,920   |                    |
| 3.3  | Kerbs                     | Insitu Concrete                | 19,240    |                    |
|  | FURNITURE                 |                                |           |                    |
| 3.4  | Fixed Furniture           | Raised Planter Edges           | 14,440    |                    |
| 3.5  | Bollards                  | Manual                         | 61,500    |                    |
|  | MISCELLANEOUS             |                                |           |                    |
| 3.6  | Stage & Canopy            | Excluded                       | -         |                    |
| 3.7  | Corner Artworks           | Excluded                       | -         |                    |
| 4.0  | SOFT LANDSCAPING          |                                |           | 75,600             |
| 4.1  | Trees                     | 200L Nursery Stock             | 36,000    |                    |
| 5.0  | ELECTRICAL                |                                |           | 236,800            |
| 5.1  | Feature Lighting          | Gobo (Projection Lighting)     | 125,000   |                    |
| 6.0  | HYDRAULIC                 |                                |           | 133,500            |
| <b>TOTAL incl Prelims, Traffic Mgt Marking and Contingency</b> |                           |                                |           | <b>\$1,339,049</b> |

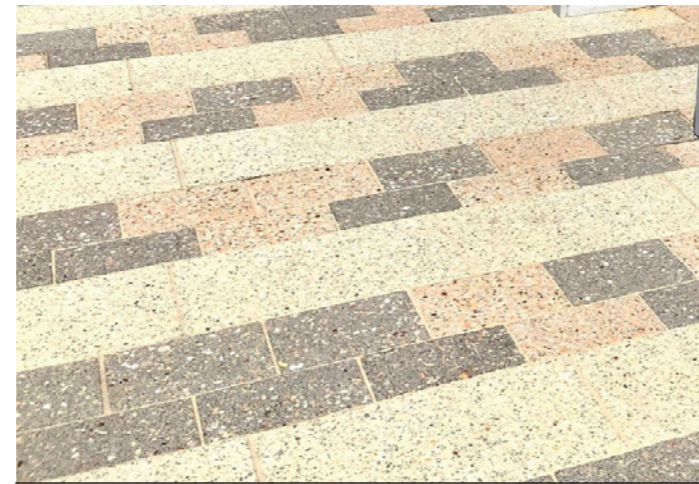
Note:  
 The tables above provide a high level summary to highlight the differences between Options A, B & C.  
 For detailed breakdown and the comprehensive list of items and associated costs, refer to WT partnership Report.



# Lower Level Option (C)



C3.1 Road Paving: Interlocking Road Paver



C3.2 Verge Paver: URBANSTONE Engineered Stone



C3.3 Kerbs: Insitu Concrete



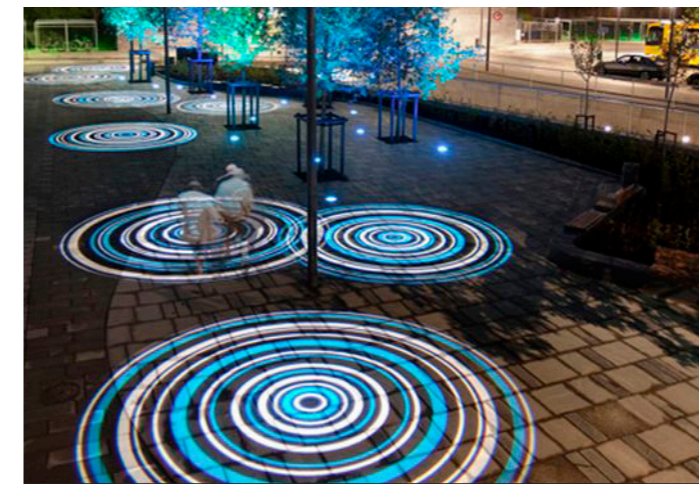
C3.4 Raised Planter Edges



C3.5 Bollards: Automated Pop Up Bollards



C4.1 Tree Sizes: 200L



C5.1 Feature Lighting: Gobo Projection Lighting



**ASPECT Studios**

Level 9, 197 St Georges Terrace,  
Perth, WA 6000  
T: +61 0497 834 599  
E: [perth@aspect-studios.com](mailto:perth@aspect-studios.com)