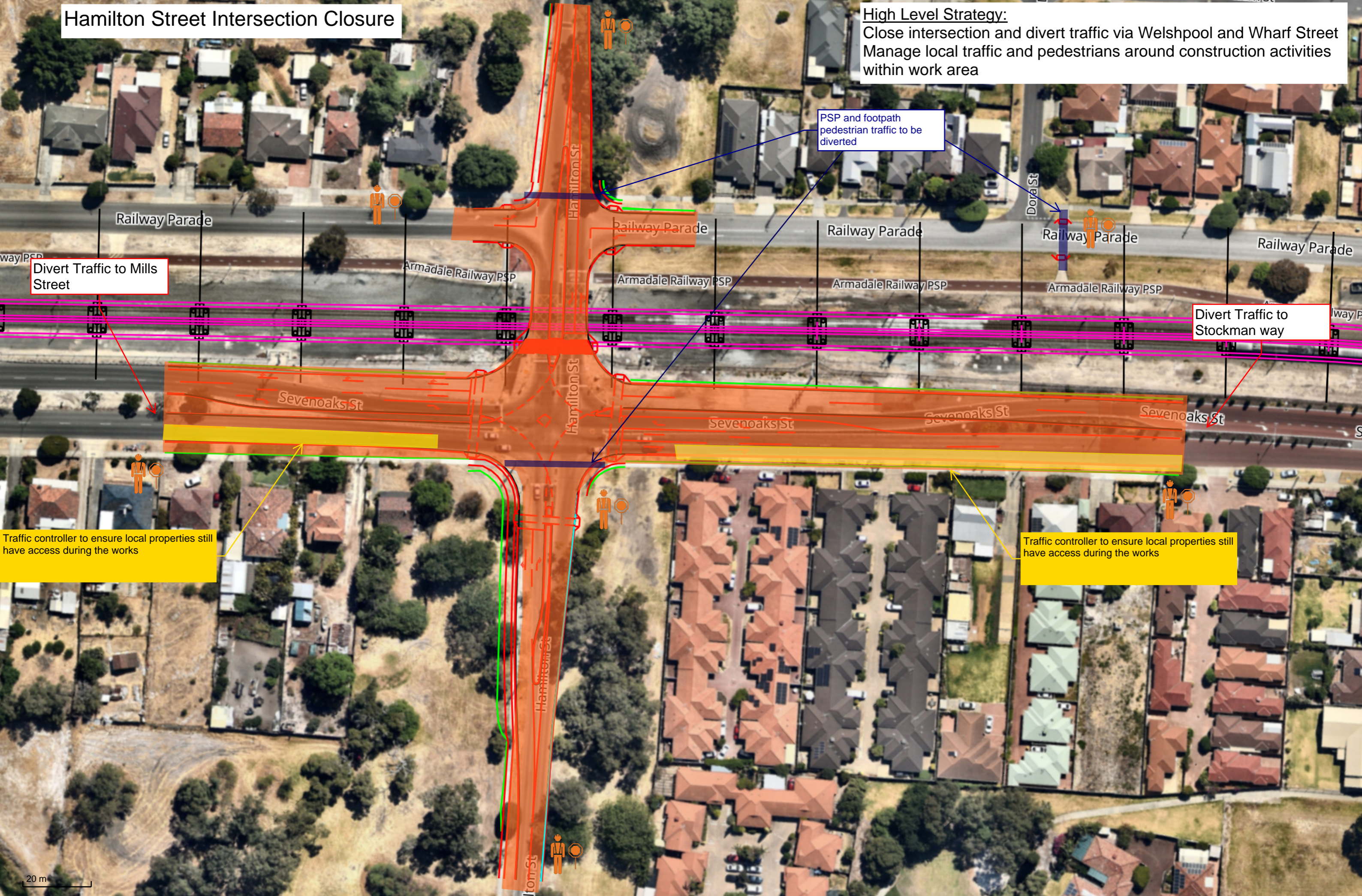


Hamilton Street Intersection Closure

High Level Strategy:
Close intersection and divert traffic via Welshpool and Wharf Street
Manage local traffic and pedestrians around construction activities within work area



Divert Traffic to Mills Street

Divert Traffic to Stockman way

PSP and footpath pedestrian traffic to be diverted

Traffic controller to ensure local properties still have access during the works

Traffic controller to ensure local properties still have access during the works

20 m

Wharf Street Level Crossing Removal