


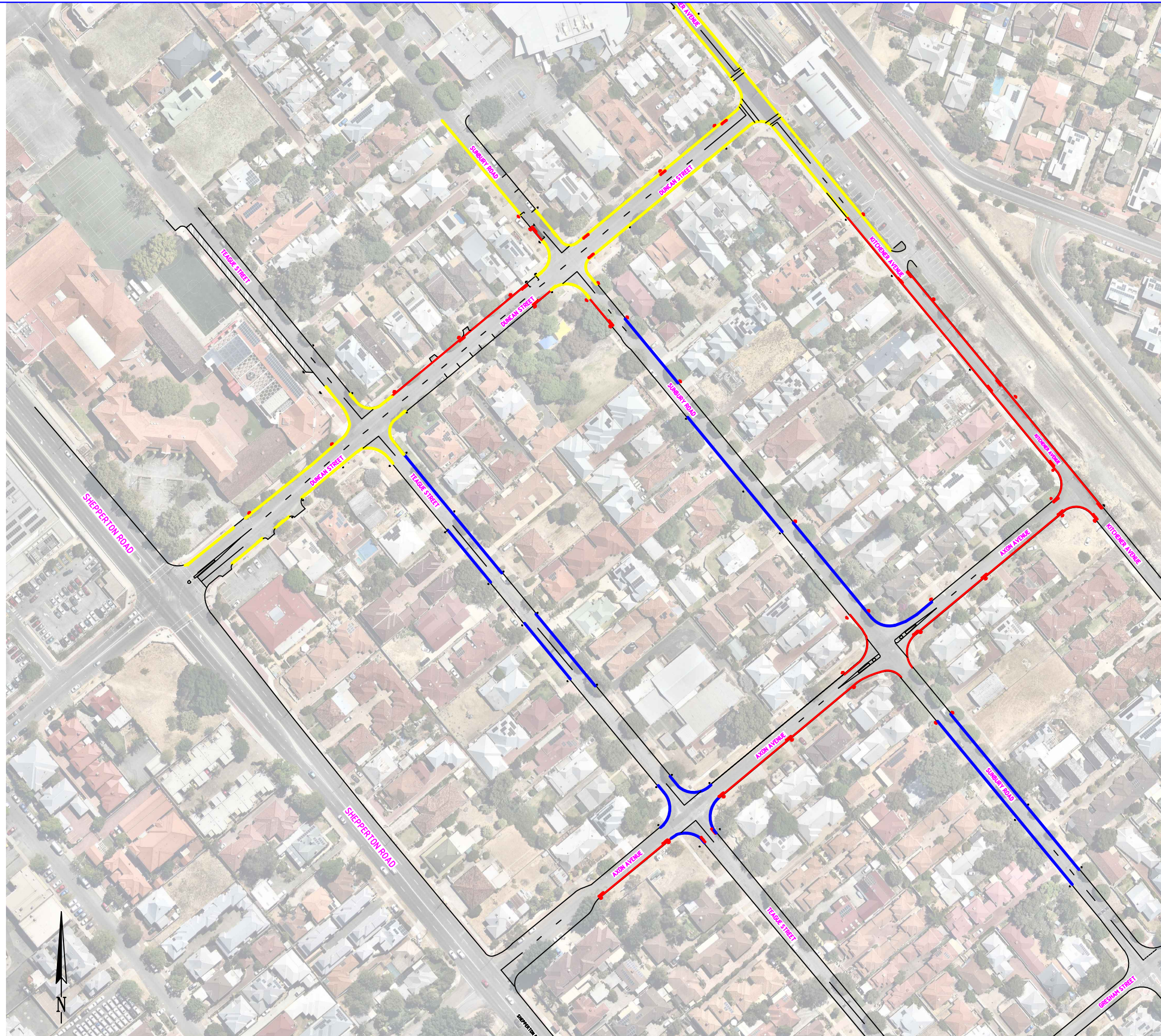


LEGEND:

-  Existing Painted "No Stopping" Yellow Line Marking
-  Existing "No Stopping" Area (without painted line marking)
-  Proposed New "No Stopping" Area



NOTES

- 1.0 DISTANCE BETWEEN SIGNS <75mm ACCORDING TO REGULATIONS
- 2.0 ALL MEASUREMENTS TO BE READ IN METERS

DISCLAIMER:

THE CHANGES ARE ONLY TEMPORARY AT THIS STAGE TO FACILITATE BUS MOVEMENTS AND IMPROVE SAFETY ALONG KEY ROUTES.

PARKING RESTRICTIONS FOR METRONET REPLACEMENT BUS ROUTES