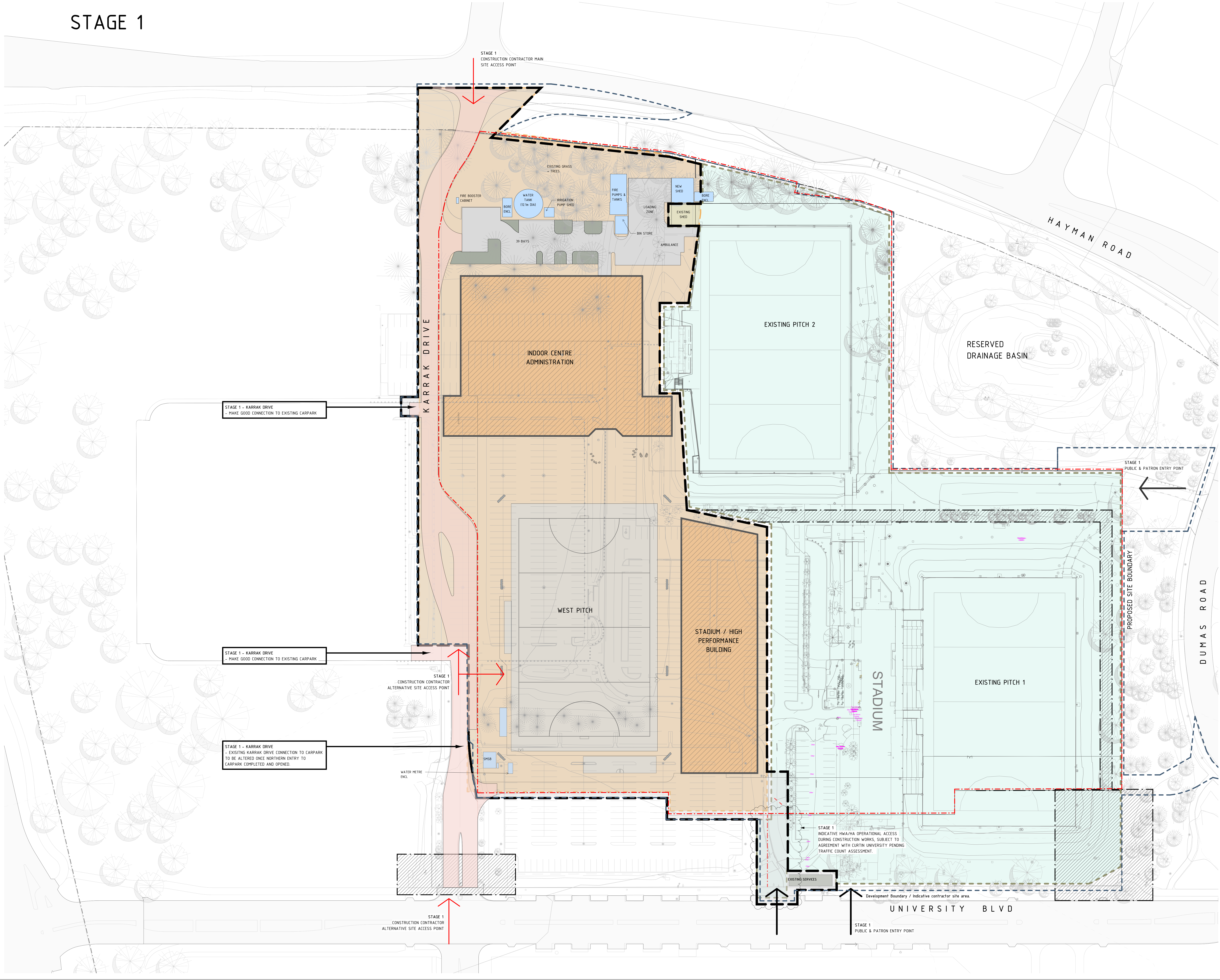


STAGE 1

TOWN OF VICTORIA PARK
Received: 07/01/2025



LEGEND

- PROPOSED SITE BOUNDARY
- STAGE 1 - INDICATIVE WORKS BDY
- STAGE 2 - INDICATIVE WORKS BDY
- DEVELOPMENT SITE BOUNDARY
- AREA REQUIRED FOR HWA OPERATIONS
- INDICATIVE LOCATION FOR SERVICES CONNECTIONS

NOTE:

EXISTING STADIUM, PITCH 1 & PITCH 2 TO REMAIN OPERATIONAL DURING STAGE 1 WORKS

NOT FOR CONSTRUCTION

REV	DATE	DESCRIPTION	BY
K	03.12.2024	REVISED FOR DEVELOPMENT APPLICATION	SS
J	25.11.2024	REVISED FOR DEVELOPMENT APPLICATION	SS
I	15.11.2024	ISSUE FOR DEVELOPMENT APPLICATION	SS
H	18.11.2024	ISSUE FOR DESIGN DEVELOPMENT	SS
G	25.10.2024	ISSUE FOR DD COORDINATION	SS
F	20.09.2024	ISSUE FOR 50% DD	SS
E	26.07.2024	ISSUED FOR INFORMATION	SS
D	12.07.2024	SCHEMATIC DESIGN	SS
C	05.07.2024	ISSUE FOR COORDINATION	SS
B	21.06.2024	ISSUED FOR INFORMATION	SS

HUNT ARCHITECTS
Partners: Shadi Whelan, Nathan Jones, J. Kelly, Patrick Oliver
Partners: Neil Gifford, Chris Hogg, Kevin Hogg
per@huntarchitects.com.au

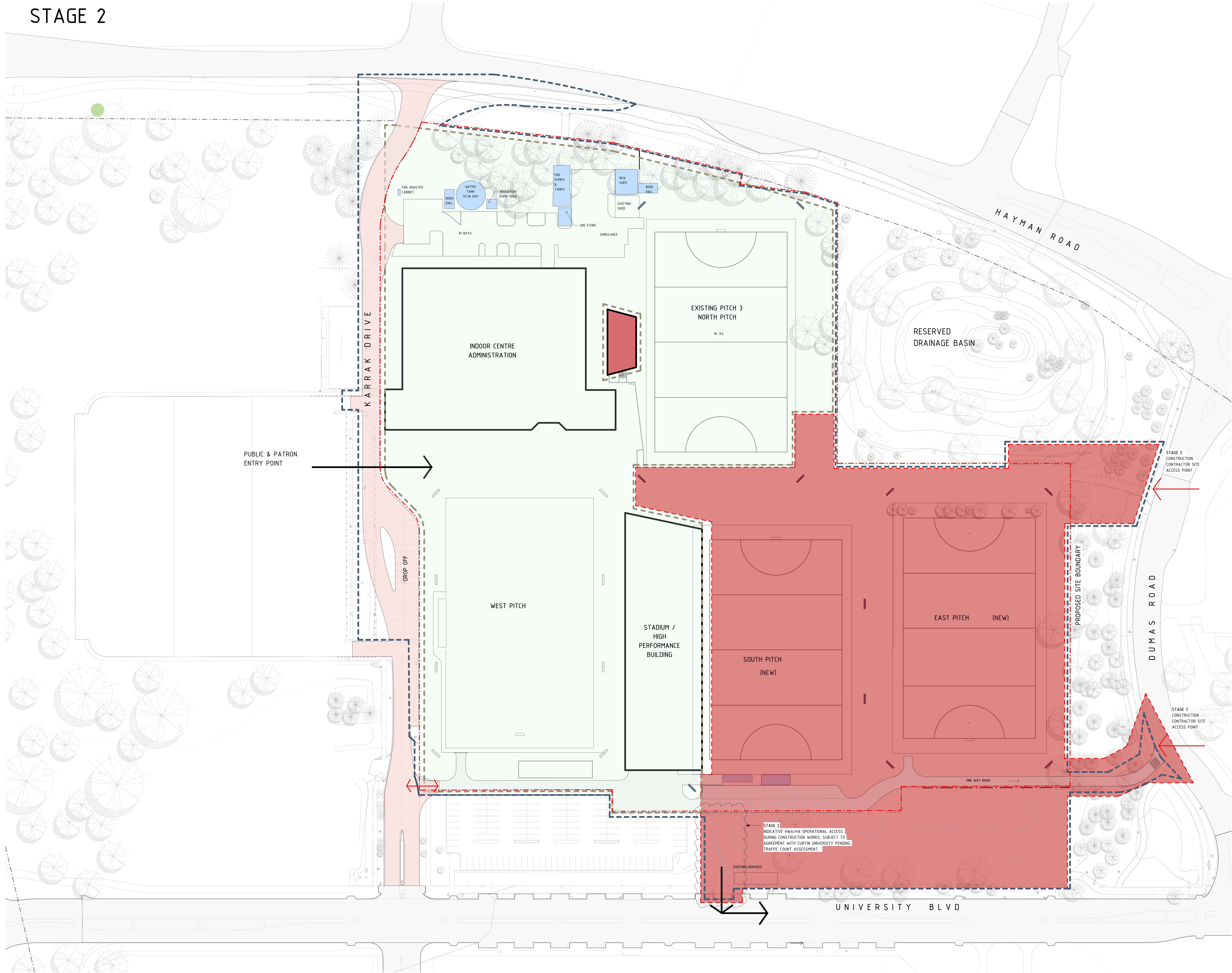
Government of Western Australia
Department of Finance
Major Projects

ARCHITECTURAL
DEPARTMENT OF FINANCE
AUSTRALIAN HOCKEY CENTRE
KENT ST, BENTLEY WA 6102
OVERALL SITE PLAN

INDICATIVE BOUNDARIES - STAGE 1

DRAWN	SS	DESIGNED	SS	REDUCED	0
CHECKED	SS	PRINCIPAL			
APPROVED	SS				
SCALE	As indicated @ A0	DATE	03.12.2024	DRAWING No.	DD-1102.01k
PROJECT No	2310	OF FILE No		REV	

THIS IS A CAD DRAWING
DO NOT AMEND MANUALLY
XXXXD-1102.01



LEGEND

- PROPOSED SITE BOUNDARY
- STAGE 1 - INDICATIVE WORKS BDY
- STAGE 2 - INDICATIVE WORKS BDY
- DEVELOPMENT SITE BOUNDARY
- AREA REQUIRED FOR HWA OPERATIONS
- INDICATIVE LOCATION FOR SERVICES CONNECTIONS

NOT FOR CONSTRUCTION

K	03.12.2024	REVISED FOR DEVELOPMENT APPLICATION	SS
J	25.11.2024	REVISED FOR DEVELOPMENT APPLICATION	SS
I	15.11.2024	ISSUE FOR DEVELOPMENT APPLICATION	SS
H	18.11.2024	ISSUE FOR DESIGN DEVELOPMENT	SS
G	25.10.2024	ISSUE FOR DD COORDINATION	SS
F	20.09.2024	ISSUE FOR 50% DD	SS
E	26.07.2024	ISSUED FOR INFORMATION	SS
D	12.07.2024	SCHEMATIC DESIGN	SS
C	05.07.2024	ISSUE FOR COORDINATION	SS
B	21.06.2024	ISSUED FOR INFORMATION	SS
REV	DATE	DESCRIPTION	BY

HUNT
ARCHITECTS
Parks Studio | Whistler Station
Level 1, 301 Park Street
Perth, WA 6000
+61 8 922 4010
perth@huntarchitects.com.au

Government of Western Australia
Department of Finance
Major Projects

ARCHITECTURAL
DEPARTMENT OF FINANCE
AUSTRALIAN HOCKEY CENTRE
KENT ST, BENTLEY WA 6102
OVERALL SITE PLAN

INDICATIVE BOUNDARIES - STAGE 2

DRAWN	SH	DESIGNED	Designer	REDUCED	0
CHECKED	SS	PRINCIPAL			
APPROVED	SS				
SCALE	As indicated @ A0	DATE	03.12.2024	DRAWING No.	DD-1102.02
PROJECT No	2310	OF FILE No		REV	