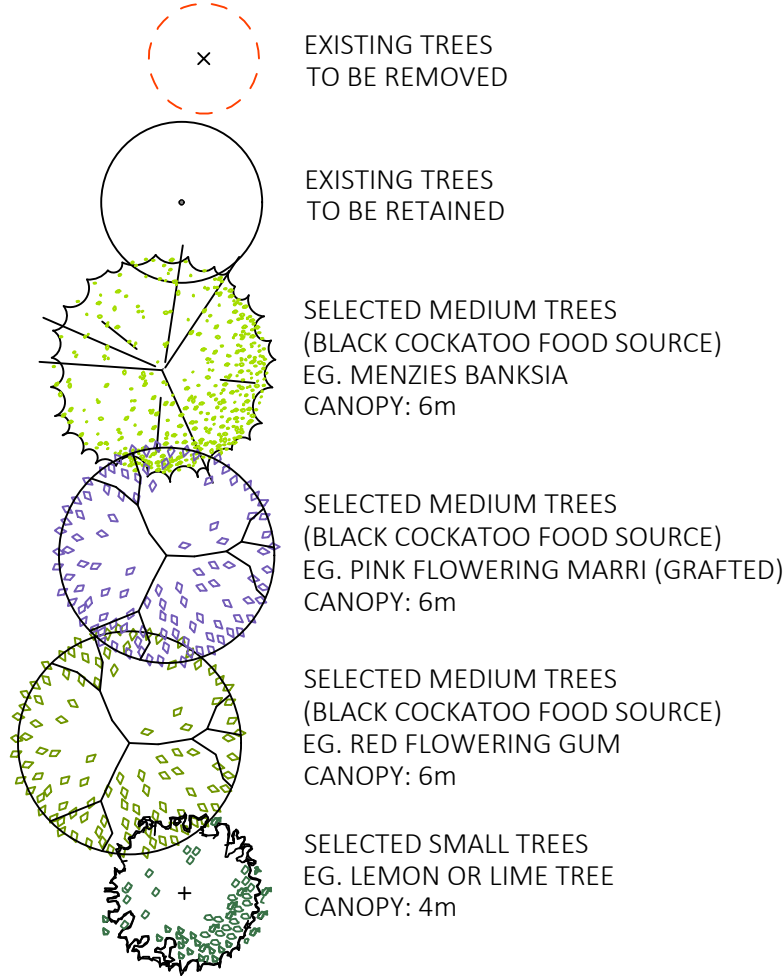
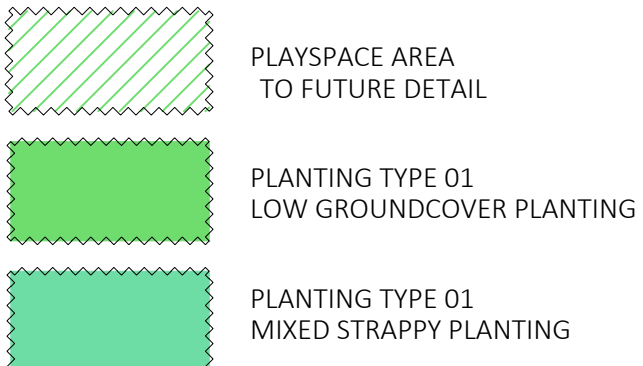


REV	DATE	DWN	APP	DESCRIPTION
A	31.01.25	ALC	KD	LANDSCAPE CONCEPT PLAN
B	24.04.25	ALC	KD	LANDSCAPE CONCEPT PLAN- UPDATED

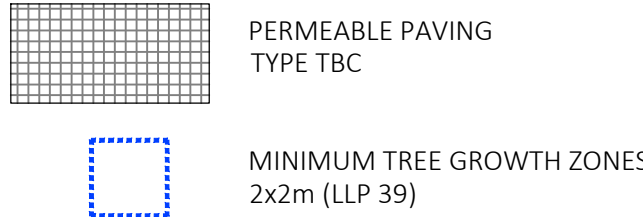
## LEGEND TREES



## PLANTING



## MISC



## NOTES

- GENERAL
  - 1.1 ALL SCALES ARE AS NOTED AND TO SUIT A1 PAPER SIZE.
  - 1.2 THIS DRAWING MUST BE READ IN CONJUNCTION WITH ALL RELEVANT SCHEDULES, REPORTS AND DRAWINGS AND PROJECT SPECIFICATIONS.
  - 1.3 FOR ALL FINISHED LEVELS, DRAINAGE DESIGN AND WATER CONNECTION POINTS REFER TO ASSOCIATED PROJECT DOCUMENTATION (BY OTHERS).
  - 1.4 PLANTING SETOUT SHOULD BE CHECKED BY SUPERINTENDENT BEFORE INSTALLATION BEGINS.
- SOIL PREPARATION
  - 2.1 ALL AREAS ARE TO BE FINE GRADED EVENLY TO CONFORM TO KERB LEVELS AND SURROUNDING FINISHES.
  - 2.2 SURFACES SHALL BE FREE FROM DEPRESSIONS, IRREGULARITIES AND NOTICEABLE CHANGES IN GRADE. GENERALLY, GRADES SHALL DEVIATE IN LEVEL NO GREATER THAN 20mm IN ONE LINEAR METRE.
  - 2.3 PLANTED AREAS SHALL BE SPREAD WITH MIN. 50mm OF APPROVED STANDARD SOIL CONDITIONER THAT SHALL BE RIPPED INTO EXISTING SOIL TO A MIN. DEPTH OF 200mm.
  - 2.4 ALL SITE AND IMPORTED SOILS, POTTING MIX, SOIL CONDITIONERS AND MULCHES TO BE IN ACCORDANCE TO RELEVANT AUSTRALIAN STANDARDS.
- PLANTING
  - 3.1 PLANTED AREAS SHALL BE MULCHED WITH AN ORGANIC MULCH UNLESS OTHERWISE STATED TO A MINIMUM DEPTH OF 75mm.
  - 3.2 ADVANCED TREES SHALL BE STAKED W/ 50x50mm DIA HARDWOOD POSTS. POSTS SHALL BE PAINTED BLACK AND INSTALLED TO A MIN DEPTH OF 500mm. TREES SHALL BE SECURED TO POLES W/ RUBBER TIES IN FIGURE 8.
  - 3.3 TREES PLANTED WITH IN 1000mm OF BOUNDARY WALLS AND/OR PARKING AREAS SHALL BE INSTALLED WITHIN 600mm DEPTH NYLEX ROOT BARRIER MEMBRANE. MEMBRANE SHALL BE INSTALLED AS PER MANUFACTURERS RECOMMENDATIONS.
  - 3.4 REFER TO PLANTING PLAN FOR SPECIES AND SIZES.
  - 3.5 PLANTS TO BE SET OUT IN EVEN SPACING TO FILL THE DESIGNATED AREAS.
  - 3.6 IN AREAS OF MIXED PLANTING, SPECIES TO BE SPREAD OUT AT RANDOM, IN GROUPINGS OF 2 OR 3.
  - 3.7 PLANTS SHALL BE SUPPLIED FROM AN INDUSTRY ACCREDITED WHOLESALE NURSERY. PLANTS SHALL BE IN APPROPRIATE SIZE FOR THE LISTED POT SIZE AND IN GOOD HEALTH.
- IRRIGATION
  - 4.1 PLANTING TO GROUND LEVEL TO BE IRRIGATED VIA A FULLY AUTOMATIC SYSTEM FROM MAINS.
  - 4.2 WATER PRESSURE TO HAVE A MINIMUM FLOW RATE OF 30L/pm AT 300kPa FROM THE WATER CONNECTION POINT (OR AS STIPULATED).
  - 4.3 CONTROLLER TO BE LOCATED IN SERVICE ROOM (OR AS SHOWN ON IRRIGATION DETAILS).
  - 4.4 SLEEVES BENEATH PAVED SURFACES AND TO RAISED PLANTING AREAS TO BE PROVIDED BY OTHERS.
  - 4.5 IRRIGATION TO GARDEN BEDS TO BE NETAFIM TECHLINE, SUB SURFACE IRRIGATION. INSTALLED TO MANUFACTURERS SPECIFICATION. IRRIGATION TO TURF TO BE POP UP SPRINKLERS; MP ROTATORS OR SIMILAR. IRRIGATION TO TREES TO BE BUBBLERS; TORO FLOOD BUBBLERS OR SIMILAR.
  - 4.6 PLEASE REFER TO IRRIGATION DRAWING SET FOR FINAL LAYOUT AND SCHEDULE (TO FUTURE DETAIL).

## TREE IMAGES

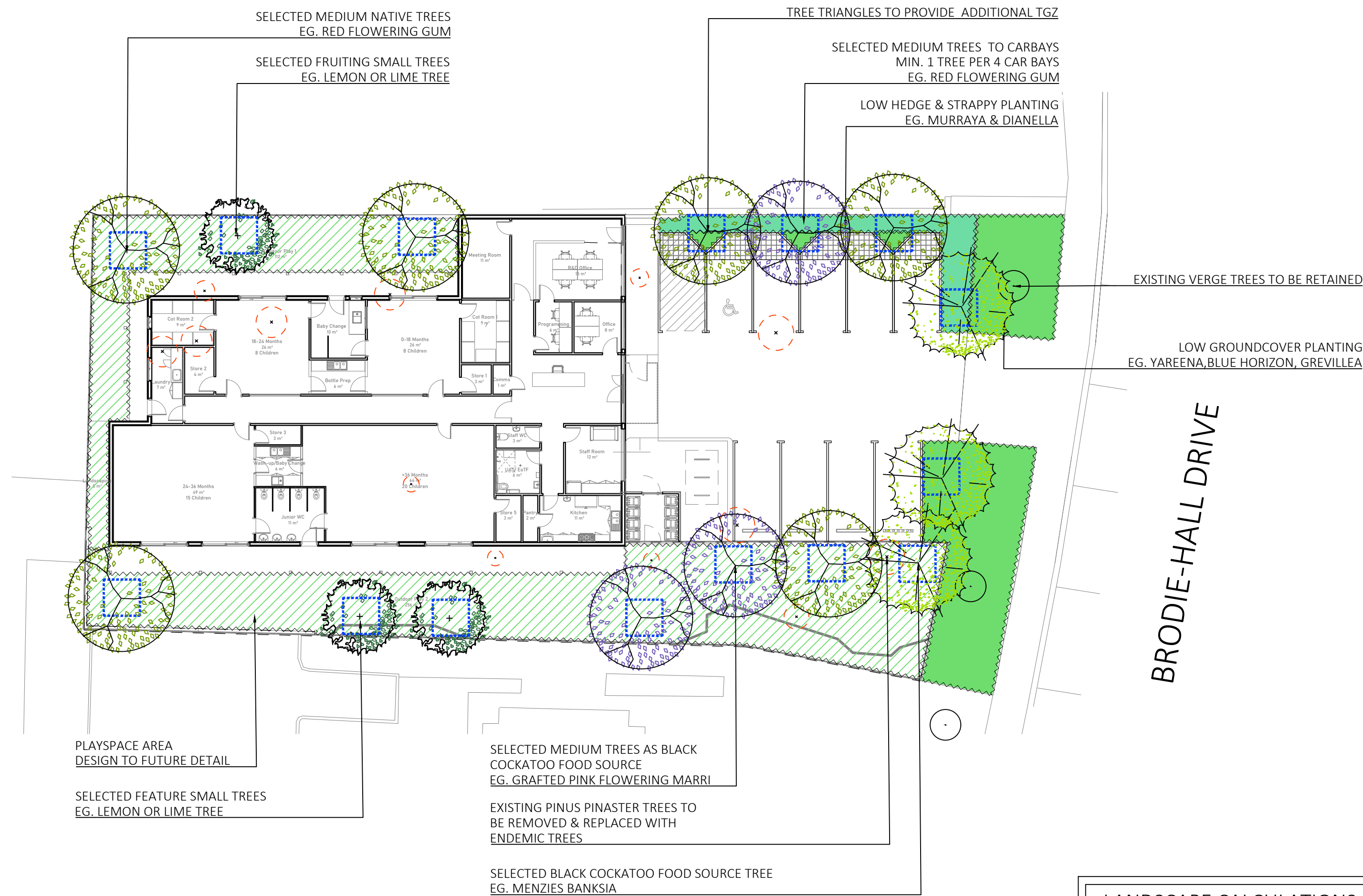


## PLANTING IMAGES



## PLANTING SCHEDULE

Symbol	Species	Common Name	Quantities	Size
<b>Trees:</b>				
BANmen	Banksia menziesii	Menzies' Banksia	As Shown	100L
CITlat	Citrus latifolia	Persian Lime	As Shown	100L
CITlim	Citrus limon 'Eureka'	Eureka Lemon	As Shown	100L
CORcal	Corymbia calophylla rosea (grafted)	Marri (pink flowering)	As Shown	100L
CORfic	Corymbia ficifolia (grafted)	WA Red Flowering Gum	As Shown	100L
<b>Strappy and Groundcovers:</b>				
ADEcun	Adenanthos cuneatus	Coral Carpet	3/m2	140mm
DIAeme	Dianella tasmanica 'Emerald Arch'	Emerald Arch	3/m2	140mm
DIAbla	Dianella tasmanica 'Blaze'	Blaze	3/m2	140mm
EREblu	Eremophila 'Blue Horizon'	Blue Horizon	3/m2	140mm
FICnod	Ficinia nodosa	Knobby Club Rush	3/m2	140mm
GREgin	Grevillea 'Gin Gin Gem'	Gin Gin Gem	3/m2	140mm
HIBsca	Hibbertia scandens	Snake Vine	3/m2	140mm
KENpro	Kennedia prostrata	Running Postman	3/m2	140mm
LOMtan	Lomandra 'Tanika'	Tanika	3/m2	200mm
MYOpar	Myoporum parvifolium 'Yareena'	Yareena	3/m2	140mm
SYZora	Syzygium 'Orange Twist'	Lilly Pilly	3/m2	200mm



## LANDSCAPE CALCULATIONS

SITE AREA  
Total site area = 1146m<sup>2</sup>  
CANOPY COVER  
Proposed Medium Trees (6 canopy) x 12 = 339.6m<sup>2</sup>  
Proposed Small Trees (4m canopy) x 3 = 37.8m<sup>2</sup>  
Total Canopy Cover = 377.4m<sup>2</sup> (32.9% of site)

NEW TREES PROPOSED WITH CONSIDERATION OF TOWN OF VICTORIA PARK LANDSCAPING & LOCAL PLANNING POLICY NO.39

NATIVE TREES SELECTED FROM "LEAFY STREETS TREE SELECTION GUIDE 2024 TOWN OF VICTORIA PARK" DOCUMENTATION

ALL TREE GROWTH ZONES AREA MEETING MINIMUM REQUIREMENTS AS PER LPP 39

