

# DUNCAN STREET INTEGRATED PUBLIC ARTWORK CONCEPT PROPOSAL July 2020

DEPARTMENT OF PLANNING, LANDS  
AND HERITAGE

DATE  
08-Dec-2020

FILE  
SDAU-024-20



<b>2</b>	About the Artists
<b>3</b>	Integrated Art
<b>5</b>	Influences & Inspiration
<b>6</b>	Concept and Theme Development
<b>8</b>	Facade Daylighting Analysis
<b>13</b>	Design Development
<b>14</b>	Facade Details
<b>16</b>	Lighting Concept
<b>17</b>	Lighting Details
<b>18</b>	Lighting Product Specs
<b>20</b>	Preliminary Budget

## Daniel Giuffre

Daniel Giuffre is a designer, researcher, and educator at The University of Western Australia (UWA) and Co-Founder of if/LAB. Daniel is a computational design specialist and a leader in his field locally who specialises in creative applications of advanced generative and computational design and fabrication technologies, using Rhino and Grasshopper tools. He pursues cross-disciplinary collaborations, where his technical and theoretical expertise enables other designers and practitioners to realise their work.

Daniel Giuffre has the computational design expertise to generate designs and realise architectural and sculptural forms that would not be feasible using more traditional processes. The team's advanced computational design methods flow through to integrated BIM workflow. The benefits of generative design are found in the flexibility and malleability of associative digital models and the ability to revise and refine the model right up to fabrication. This facilitates a uniquely craftsman-like attention to detailing and documentation, and a responsiveness in process.



Daniel has worked in Percent for Art as an artist and designer across Perth for the past 5 years. Daniels strengths involve working collaboratively with other artists, clients, local government, fabricators, architects and general contractors in ensuring the design intent is delivered to its highest level.

‘Anemoi’ is a large scale integrated piece that was recently completed in Fremantle, for the Defence Housing Australia’s LIV Apartments. This was an extremely complex piece delivered in collaboration with Rick Vermey. Co-ordination between the architects, builders, client and the fabrication and install team was integral to its success. The budget for this piece was \$500,000, which was entirely managed by the artist team, who were responsible for design, documentation and shop drawings, lighting and fabrication co-ordination and on-site supervision with our sub-contractors and fabricators, Denmac.

‘The Precinct’ is another large scale integrated piece that was recently completed within the Canning Bridge precinct, for the clients Norup + Wilson. In collaboration with Rick Vermey, Daniel was integral in the design and documentation of the project, assisting in co-ordination with the sub-contractors and lighting consultants, and having spent time in the factory installing the lighting into prefabricated modules.

‘Cygna’ is the most recently commissioned piece in collaboration with Jon Tarry for The City of Perth’s East End Revitalisation project. The project was stalled due to COVID19, however, we have progressed past design development and will soon be commencing fabrication. This piece is a free-standing light weight composite artwork inspired by the Swan River and the Black Swans looping neck. The budget for this piece is \$300,000 and will strive to push the boundaries for local advanced manufacturing capabilities.

# INTEGRATED ART

The intersection of art and architecture



Integrated Facade Screen Designed by Turner prize Nominee, Artist Liam Gillick for the Marsham St Home office Project, 2002.

Title: Home Office  
Client: Department of the British Government  
Architect: Terry Farrell  
Artist: Liam Gillick  
Date: 2002



Integrated Facade Screen Designed by Artist Rob Ley

Title: Double Exposure (Top) Endless Miles (Bottom)  
Client: Kaiser Permanente (Top) Martin Luther King Jr. Community Hospital (Bottom)  
Architect: HMC Architects  
Artist: Rob Ley  
Date: 2018

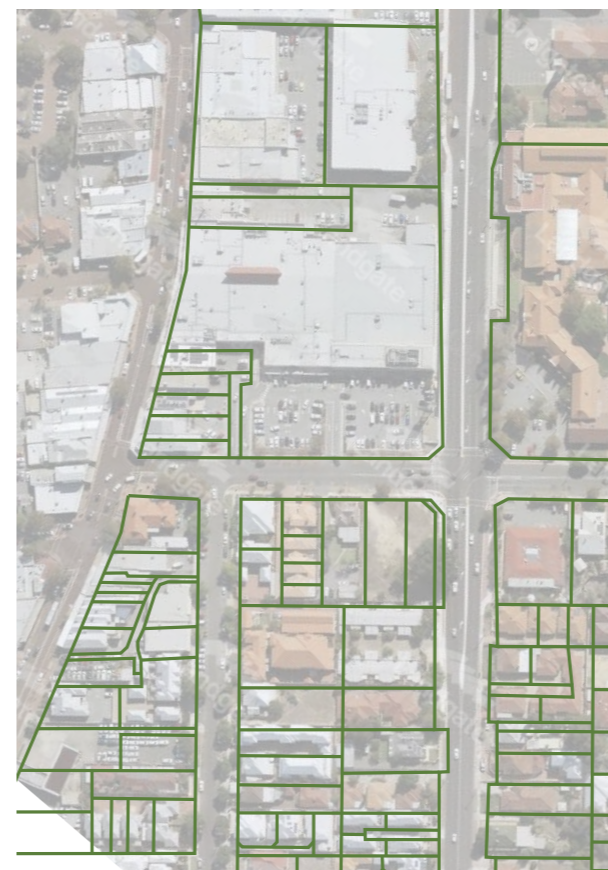
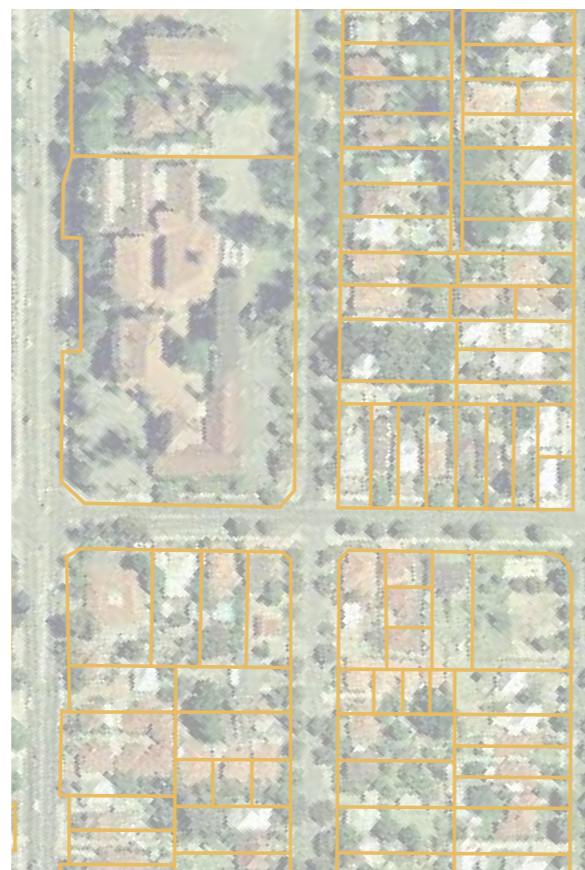
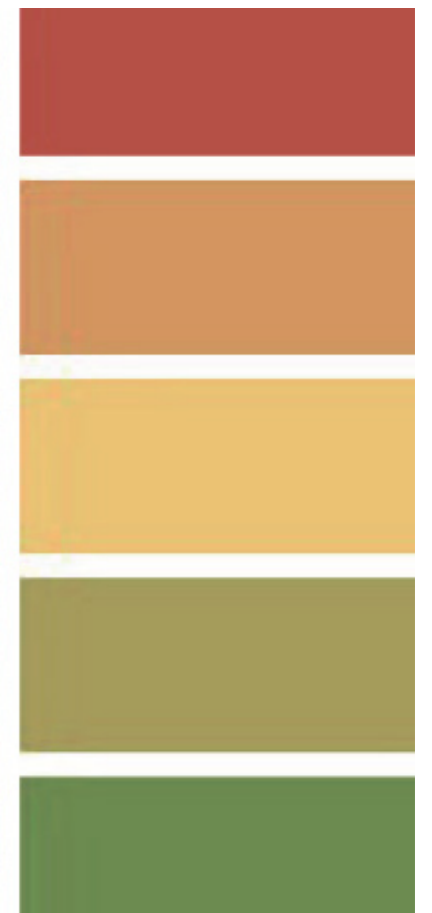
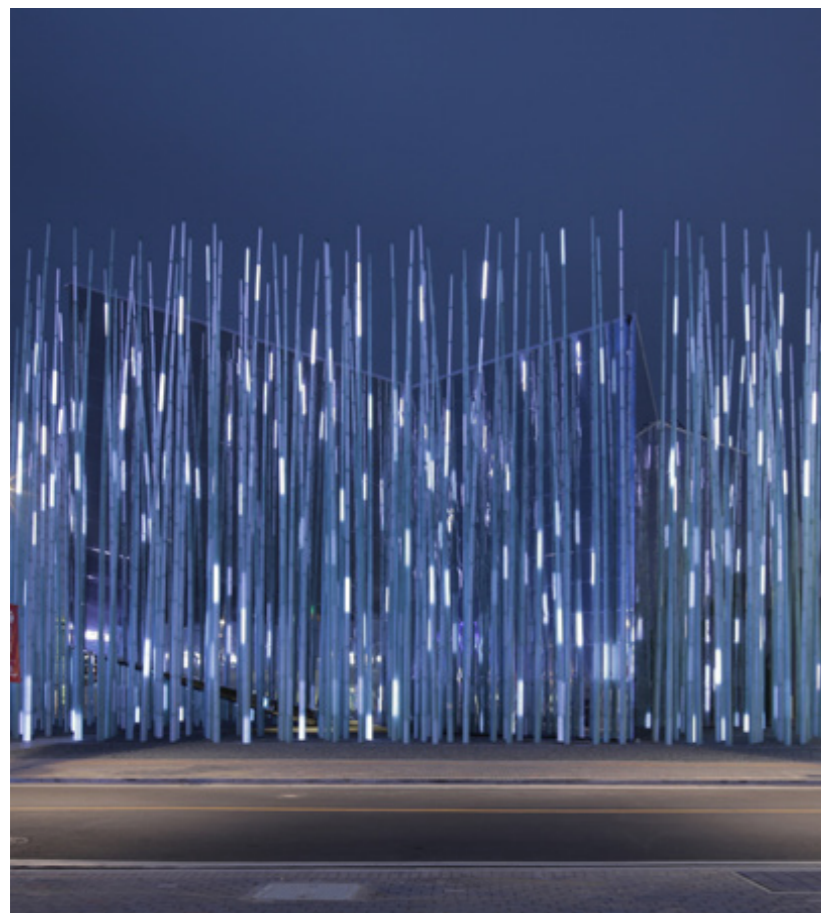


Integrated Facade Screen Designed by Artist Rob Ley

Title: Glacial Facade  
Client: Issaquah Highlands Park and Ride  
Architect: Davis Davis Architects  
Artist: Ned Kahn  
Date: 2006

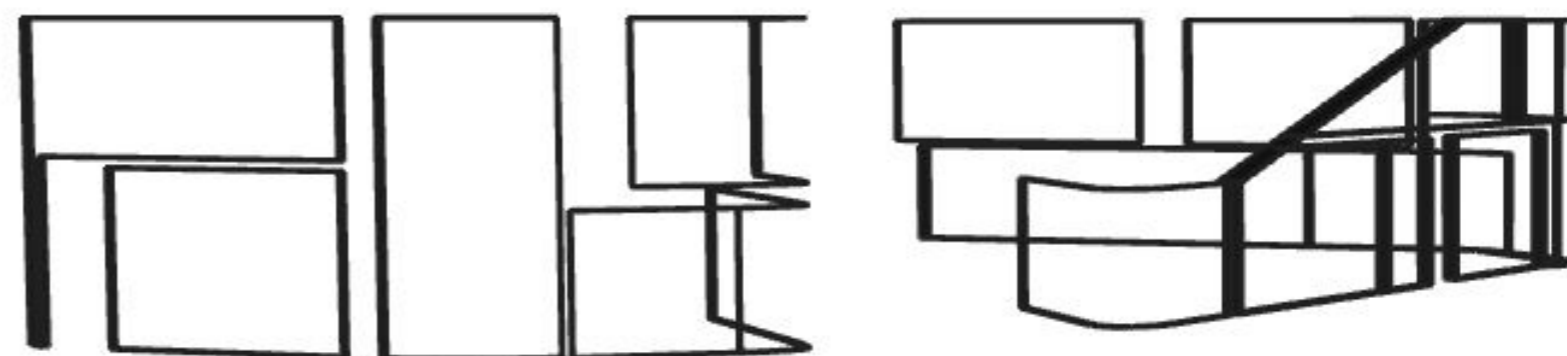
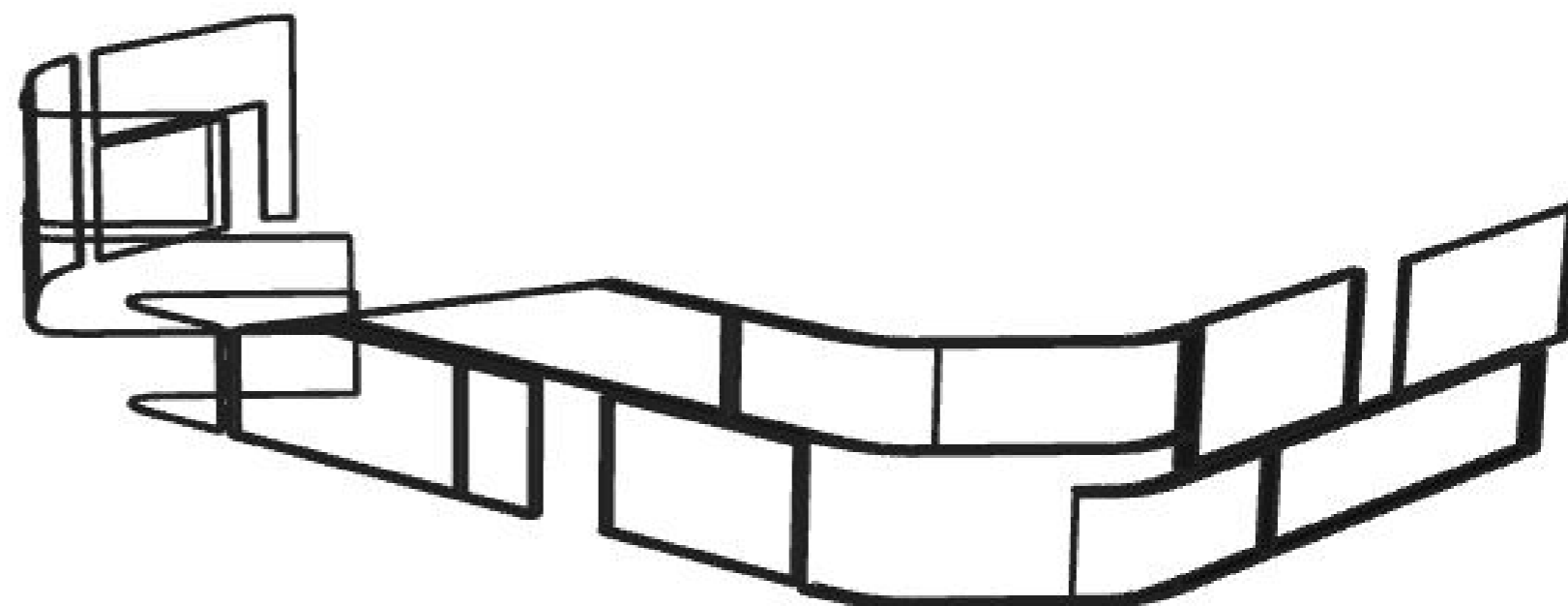


# Influences and Inspiration

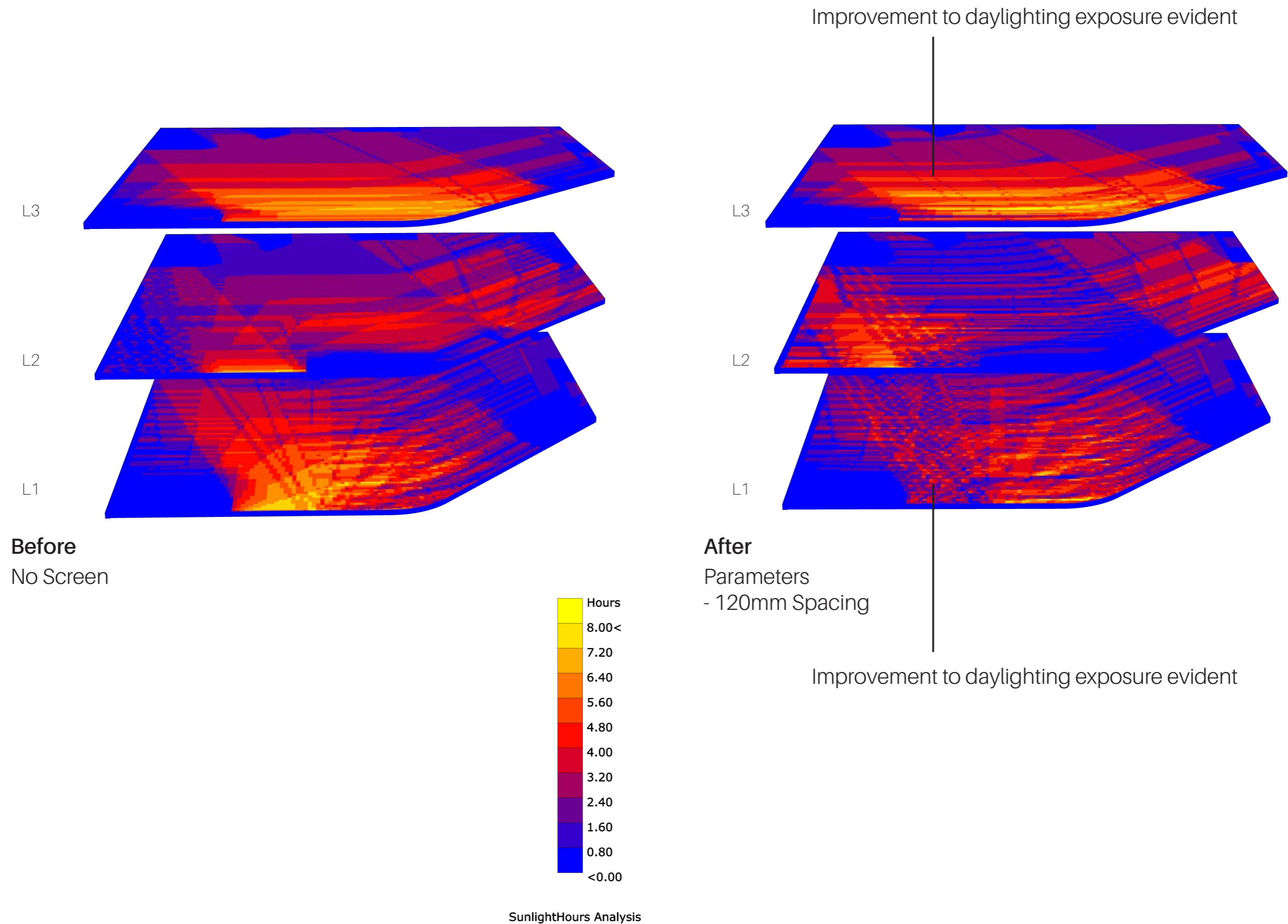


# Concept & Theme Development | Screen





# FACADE DAYLIGHTING ANALYSIS - INITIAL ANALYSIS



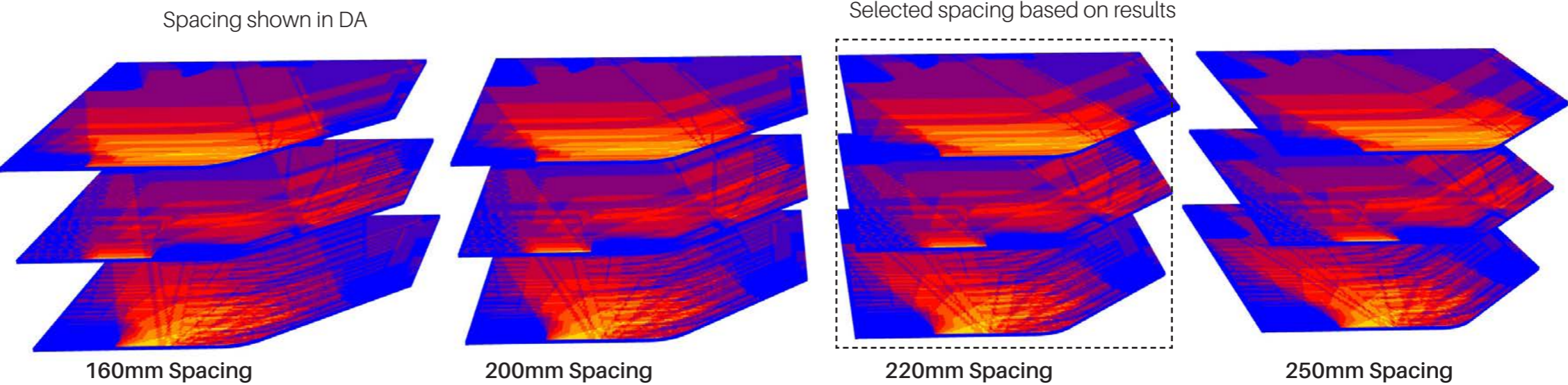
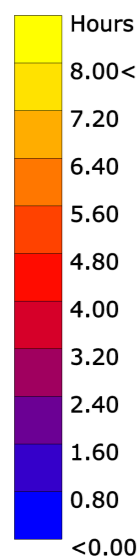
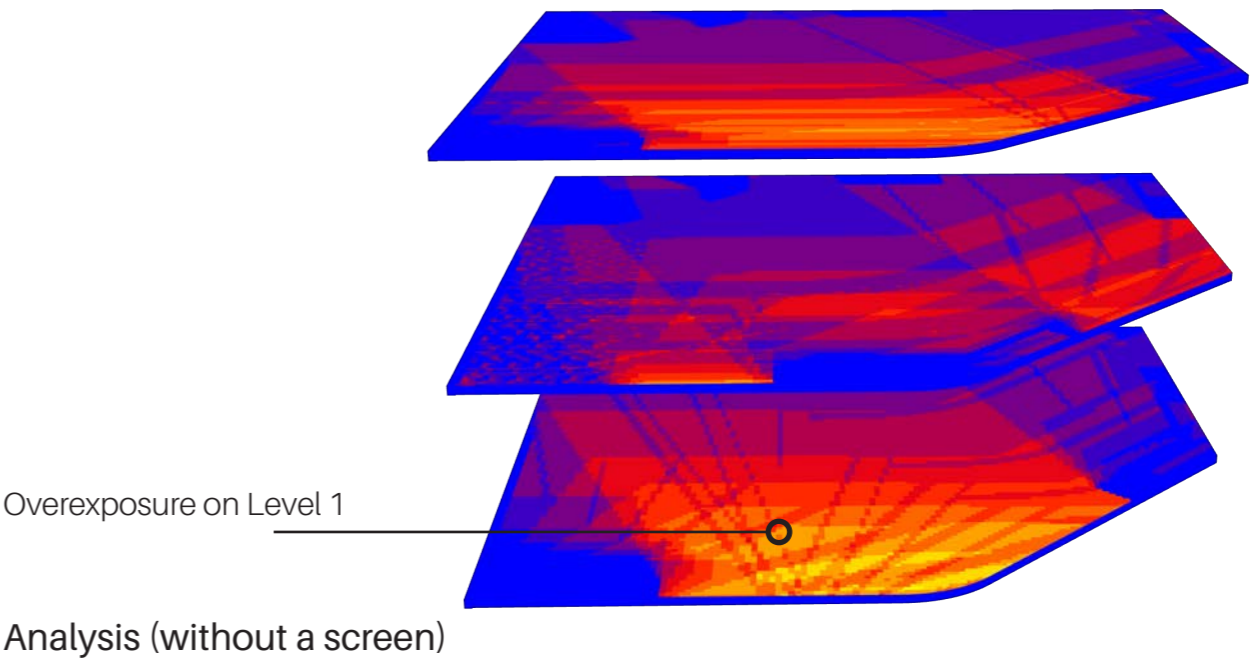
# FACADE DAYLIGHTING ANALYSIS - SPACING OPTIONS

Winter Solstice | 21st June, 2020

Spacing between louvres tested from 160mm (as designed) to 250mm

**FINDINGS**

- The analysis shows that the inclusion of the screen has a positive impact on shading the floor plate, which in turn relates to better building performance and improved thermal comfort for the occupants.
- The results show minimal impact on daylighting between the minimum and maximum spacings, therefore the 220mm spacing options has been selected.
- Level 3 shows areas of over exposure



Sunlight Hour Analysis (various screen spacings)

# FACADE DAYLIGHTING ANALYSIS - DEVELOPMENT

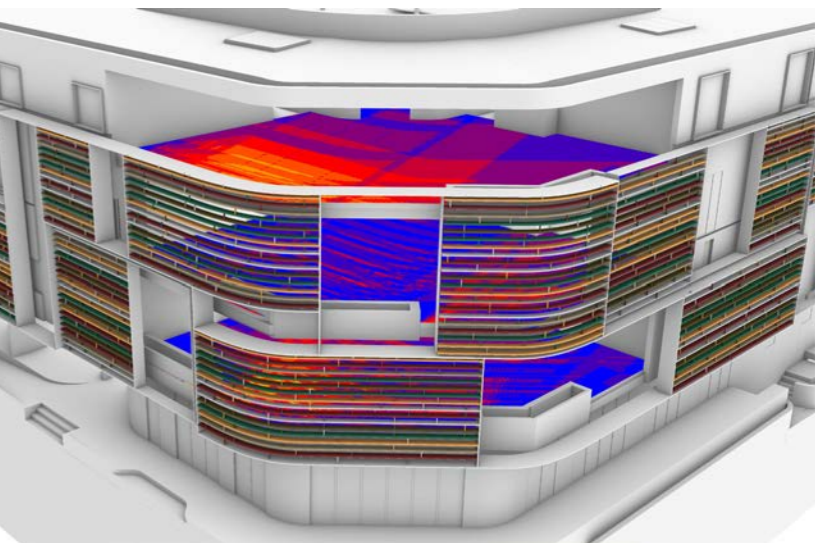
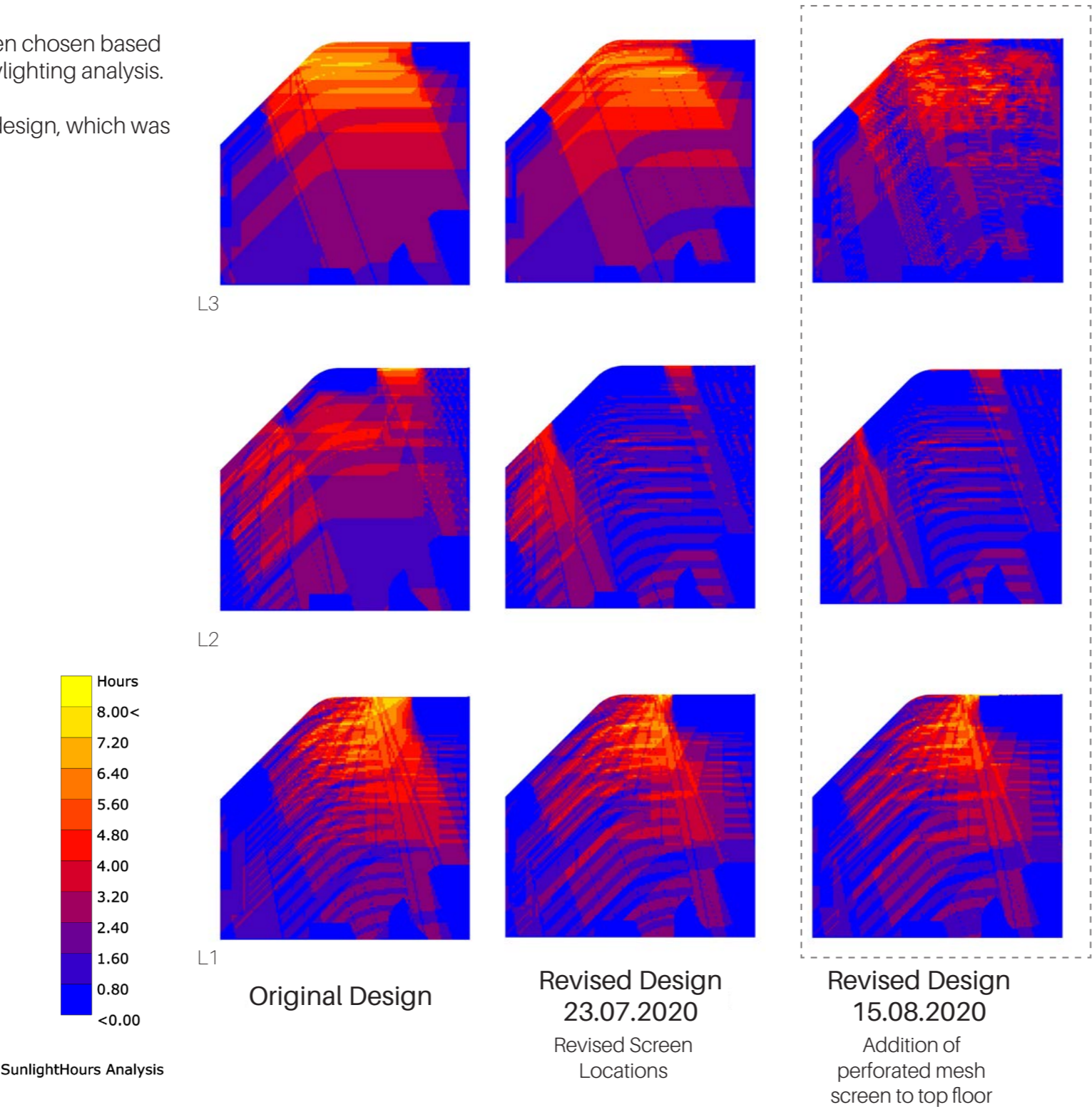
As a result of iterative analysis' as shown on the previous page, the facade has been re-designed to reduce over exposure on each of the floor plates on the western facade.

Based on the results above, we have chosen to proceed with a 220mm spacing of the facade louvres.

The arrangement of the screens have been chosen based on direct feedback from the solar and daylighting analysis.

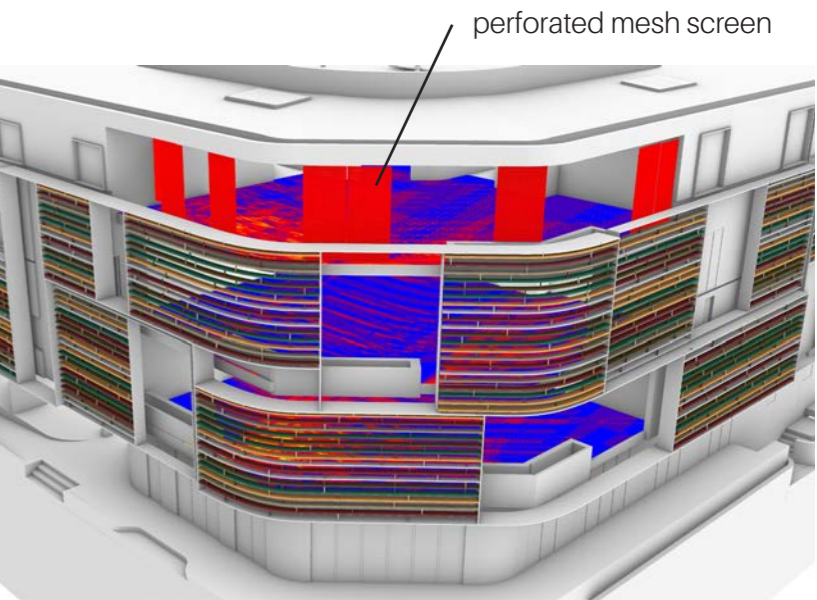
As seen to the right, the selected facade design, which was revised on the 23th

Winter Solstice | 21st June, 2020



Revised Design  
23.07.2020

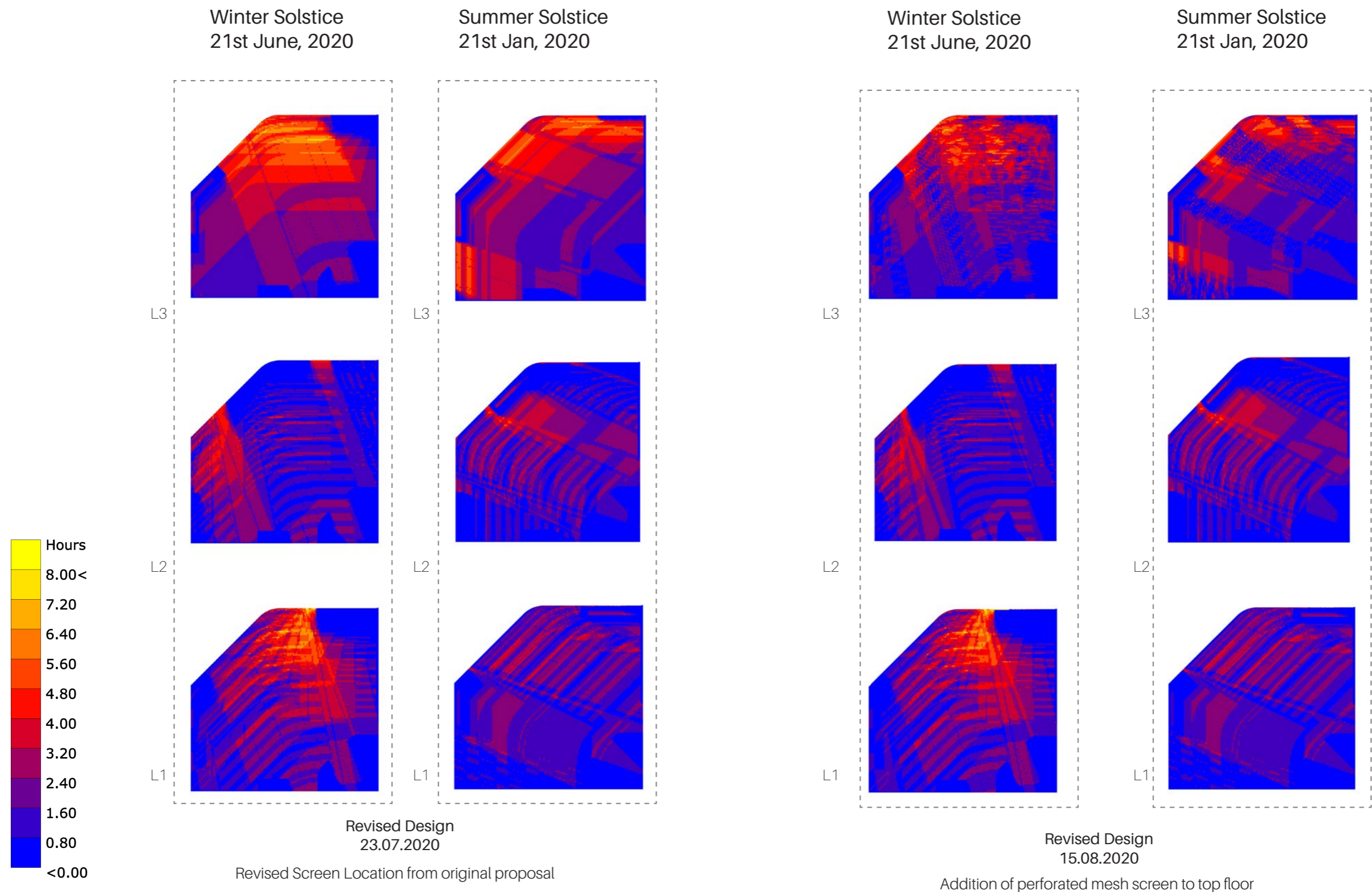
Revised Screen Locations. See pg 13



Revised Design  
15.08.2020

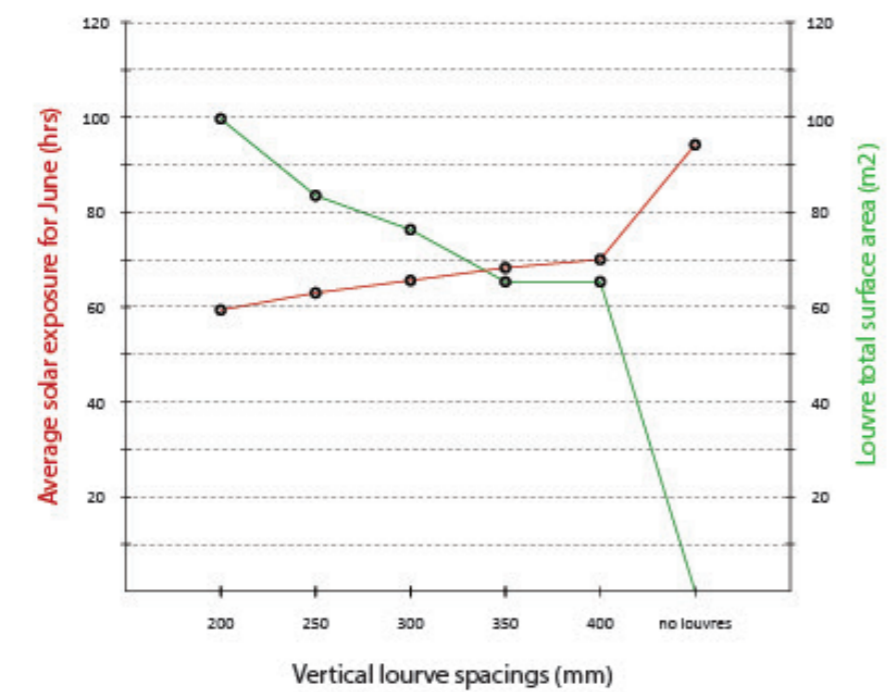
Addition of perforated mesh screen to top floor

# FACADE DAYLIGHTING ANALYSIS - SUMMER AND WINTER



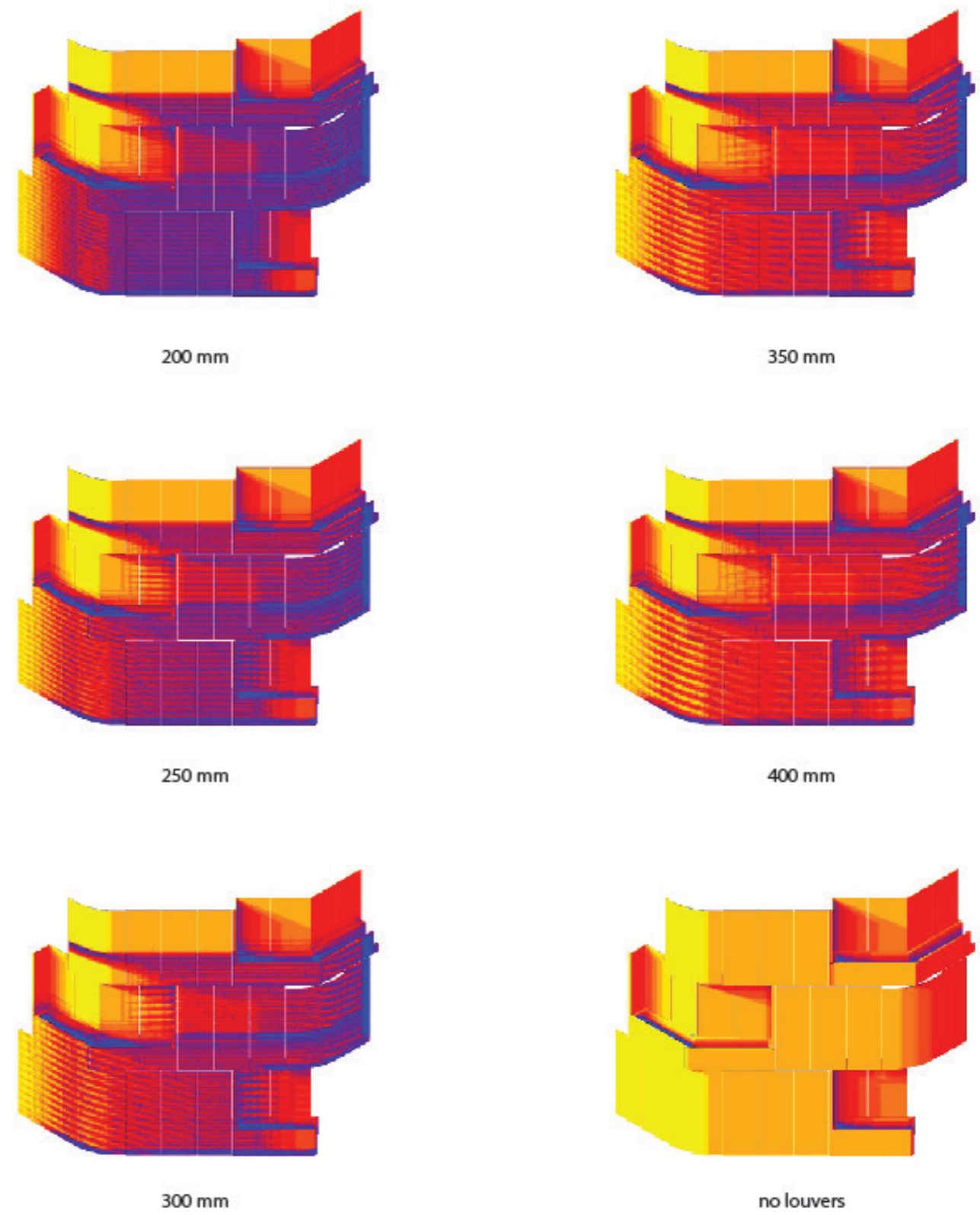
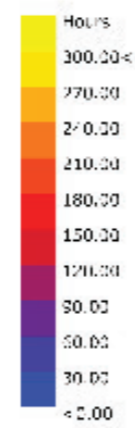
# FACADE DAYLIGHTING ANALYSIS - DEVELOPMENT

Louvre Spacing vs Sun Exposure Analysis



Louvre vertical spacing	Exposure hrs*	Louvre Surface (m2)
200	59.371	99.678
250	62.97	83.487
300	65.593	76.31
350	68.266	65.318
400	70.016	65
no louvers	94.228	0

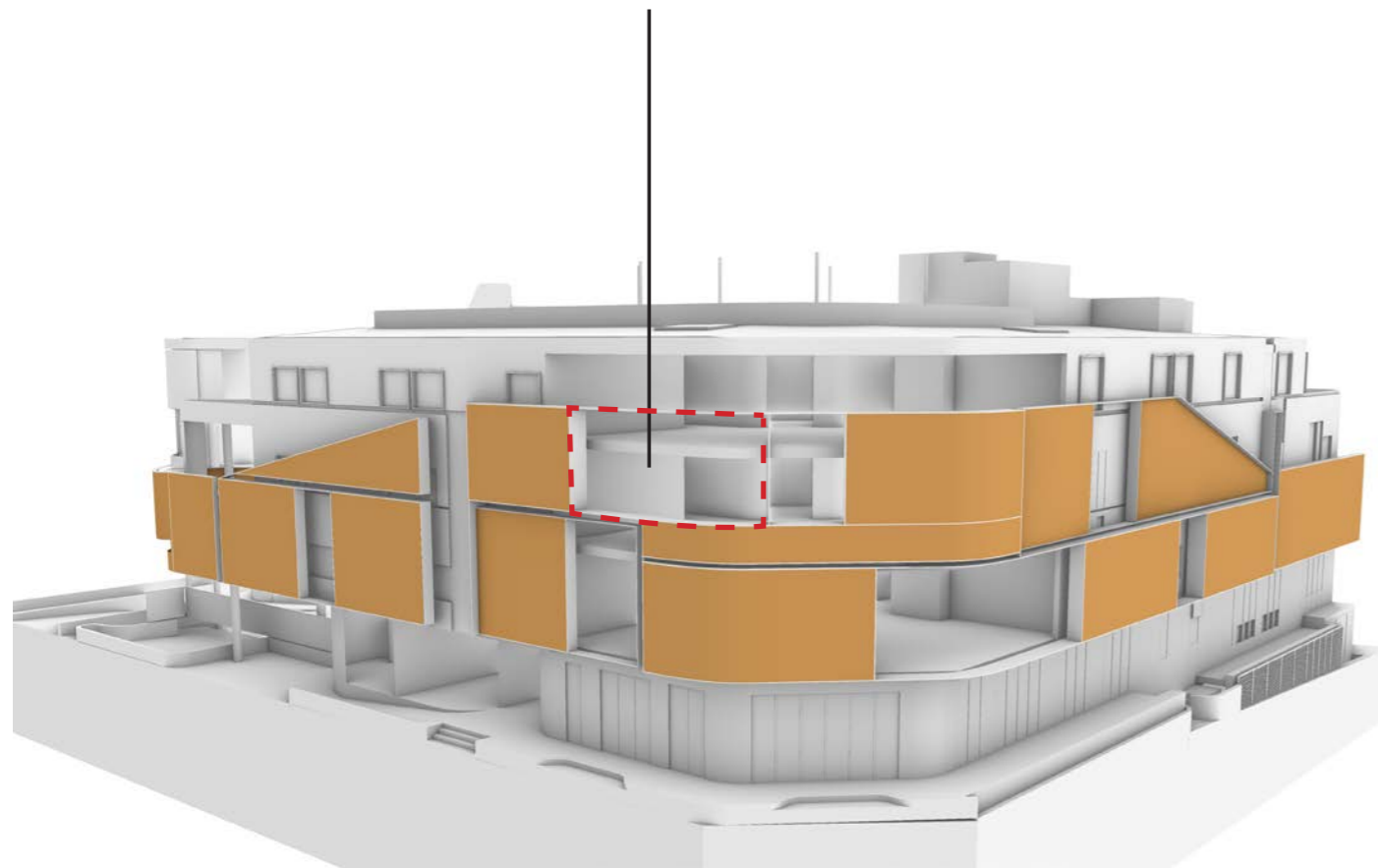
\*from June 1- 1:00 to June 30- 24:00 with 1 hrs increments



# DESIGN DEVELOPMENT

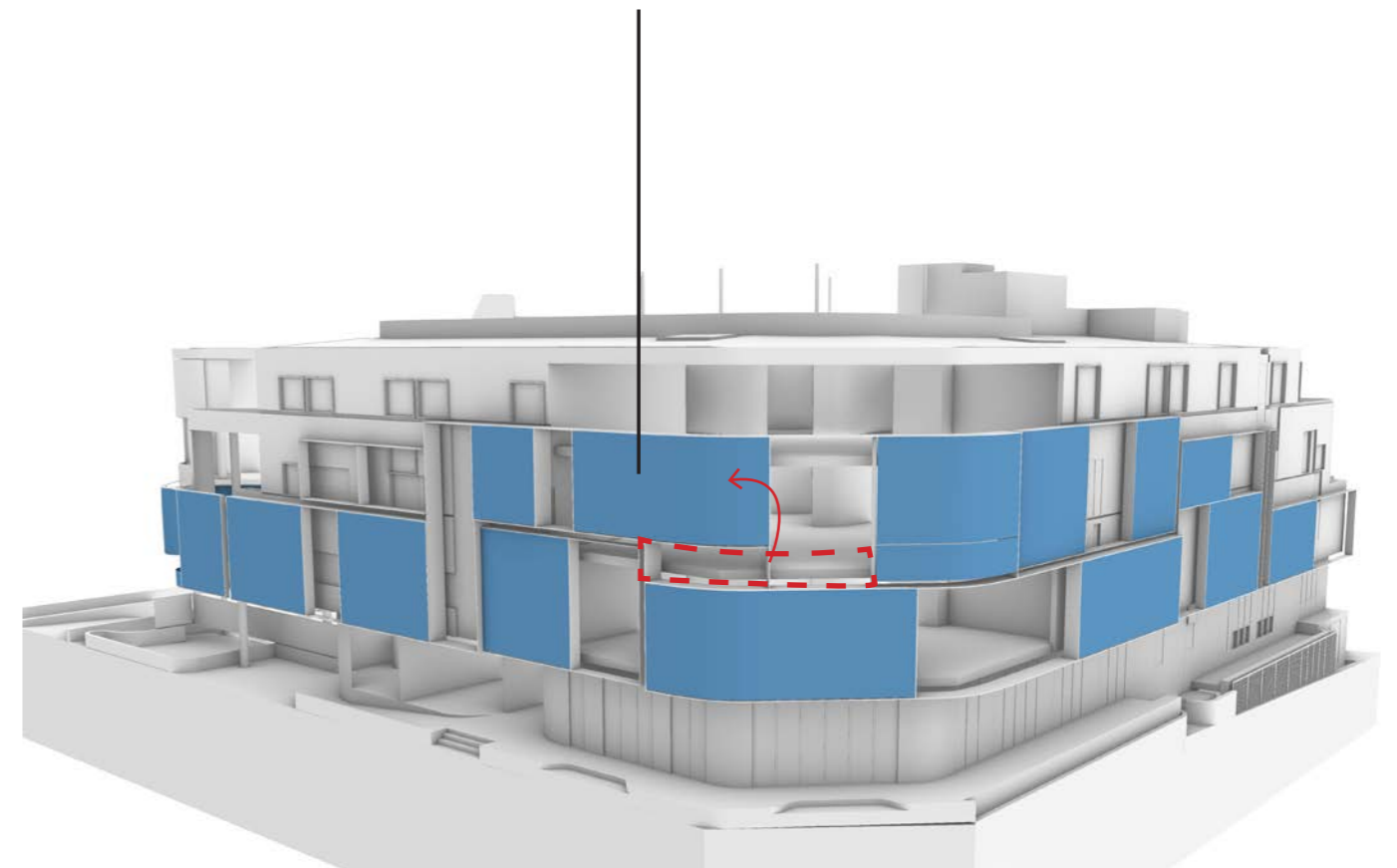
---

Zone identified with high  
daylighting exposure



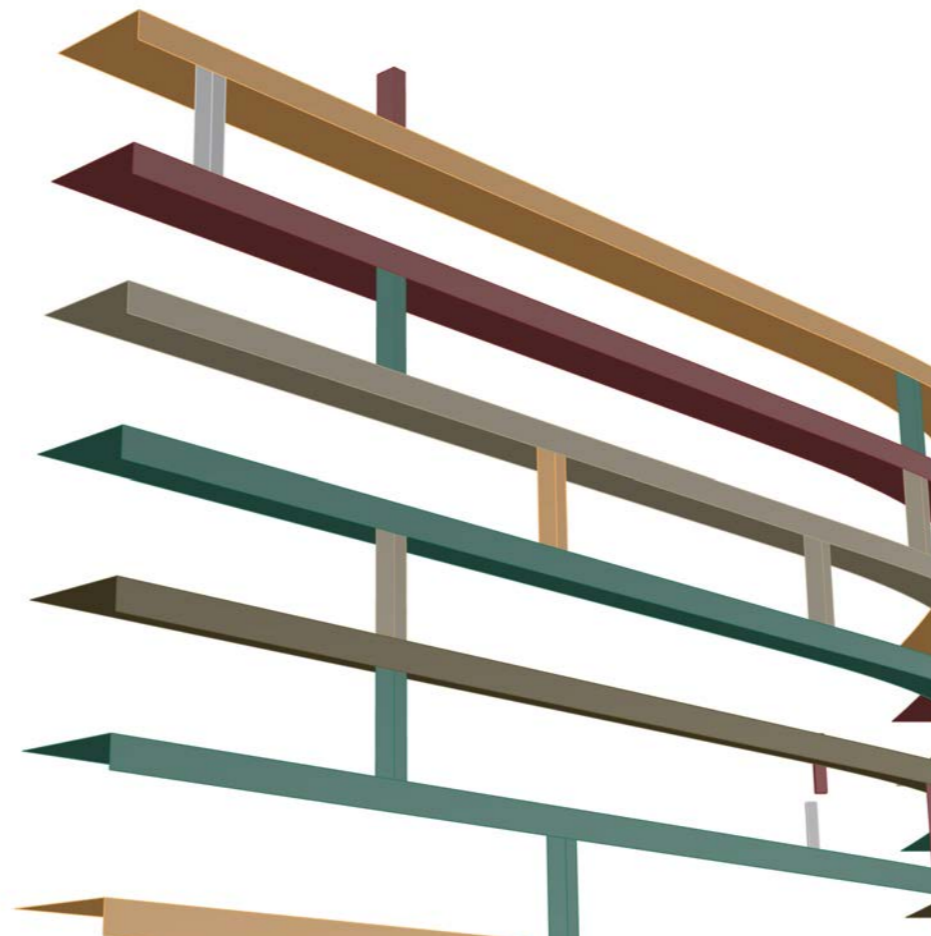
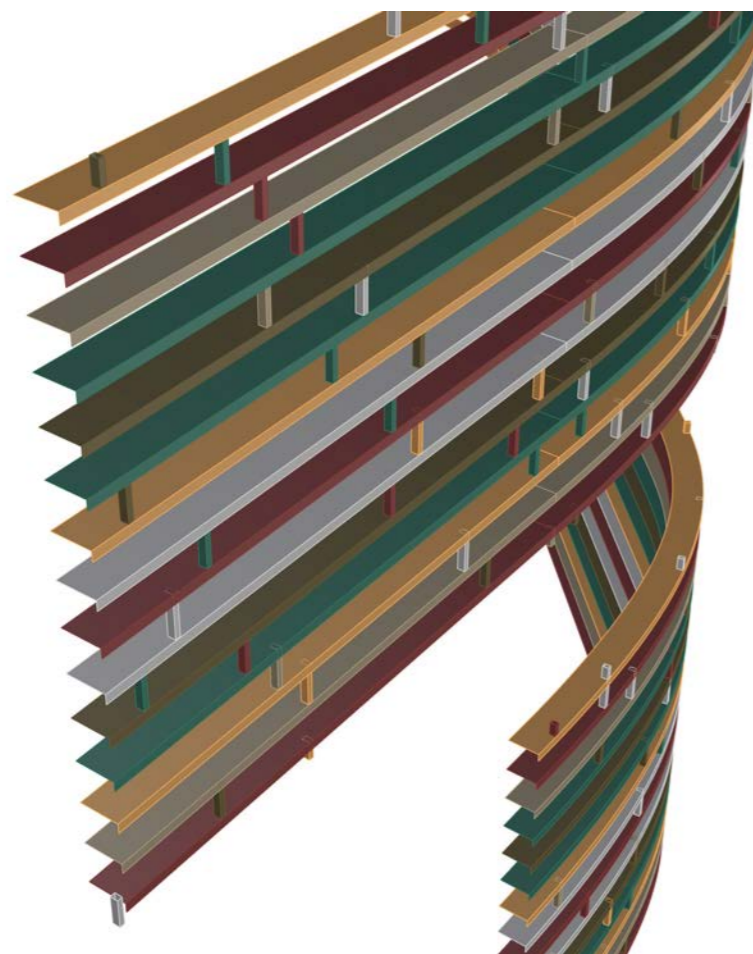
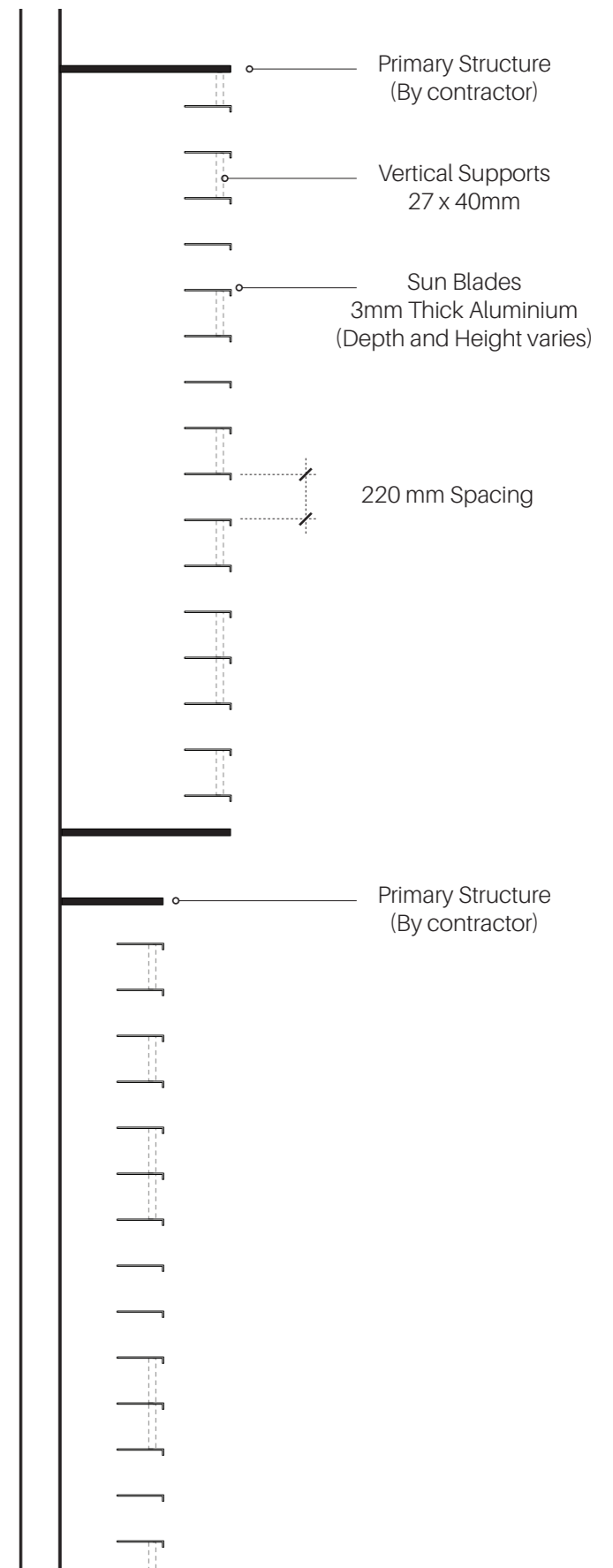
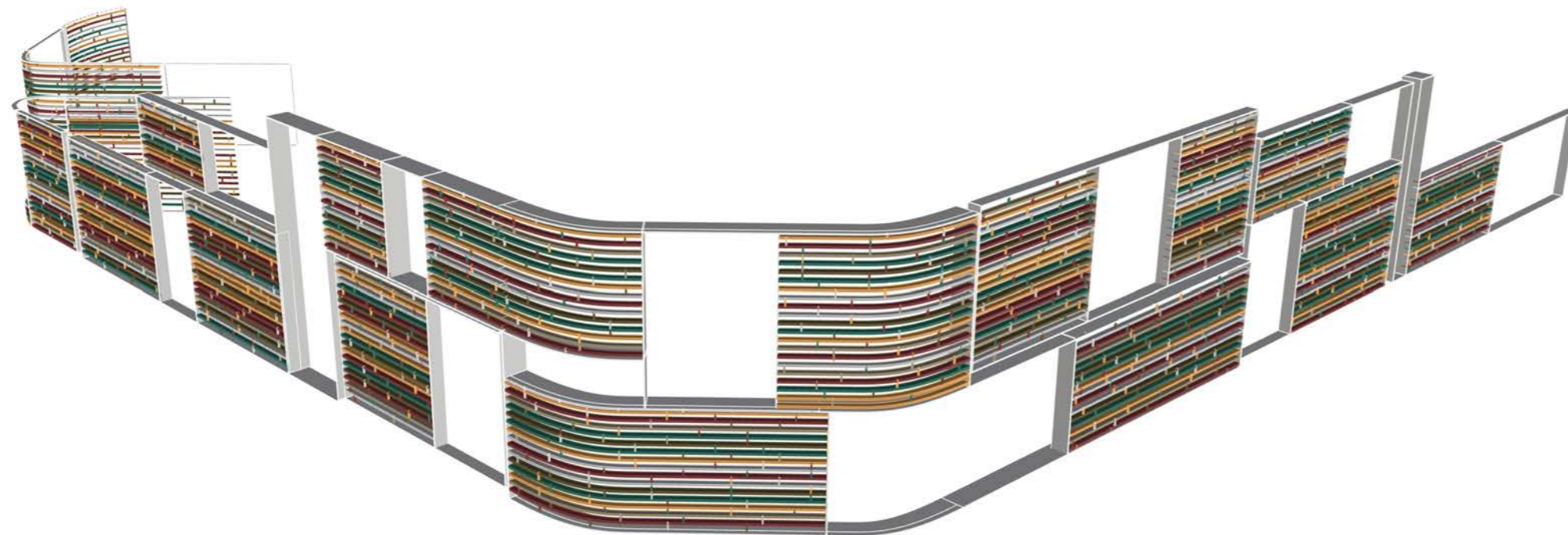
Initial Design Proposal

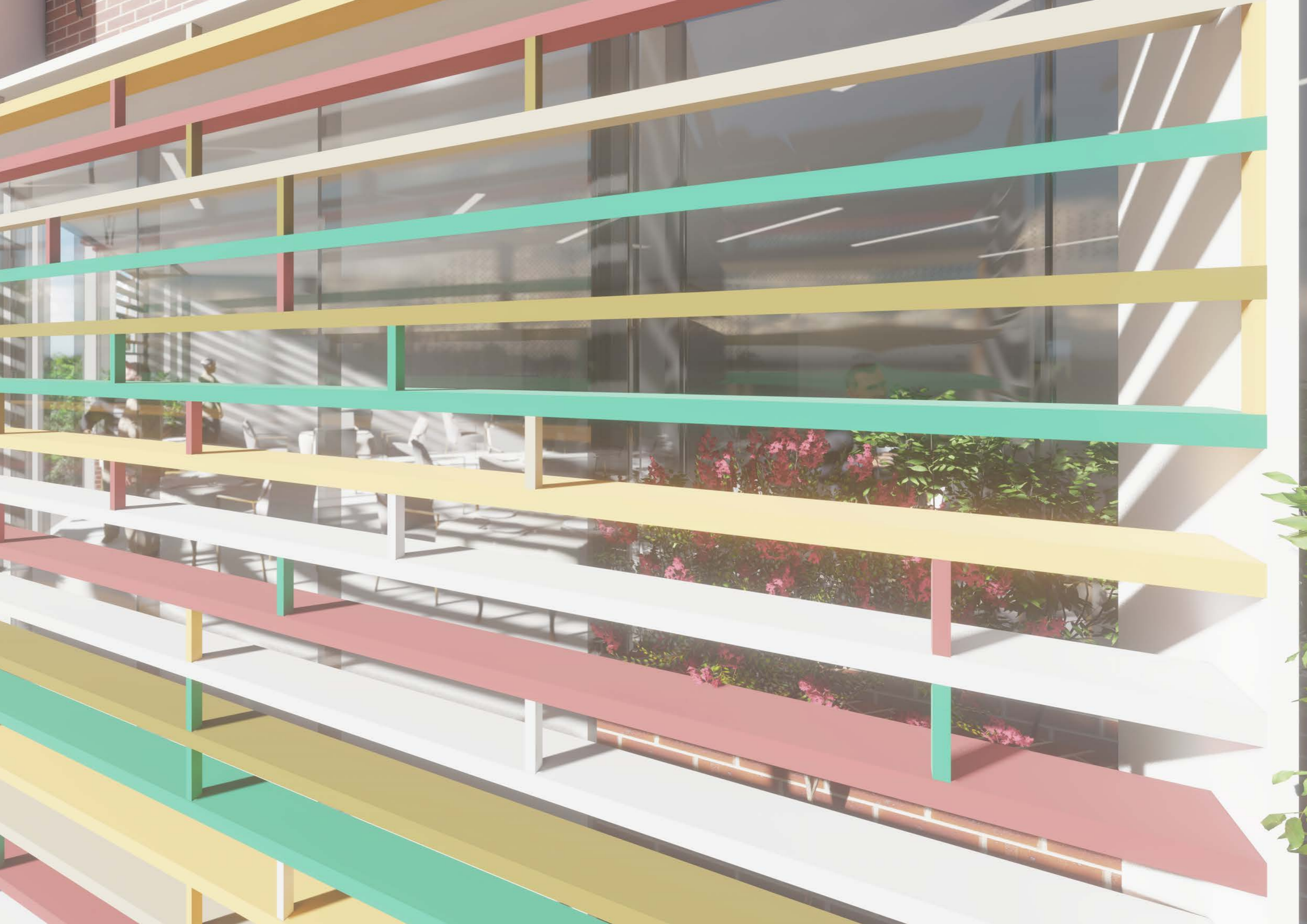
Screen relocated to  
control daylighting



Developed Design Proposal  
Post Daylighting Analysis

# FACADE DETAILS





# Concept & Theme Development | Lighting

The theme for the lighting was developed by exploring 'Autumn', which is the theme initially expressed by the architects,

The intent behind the artwork lighting is inspired by the

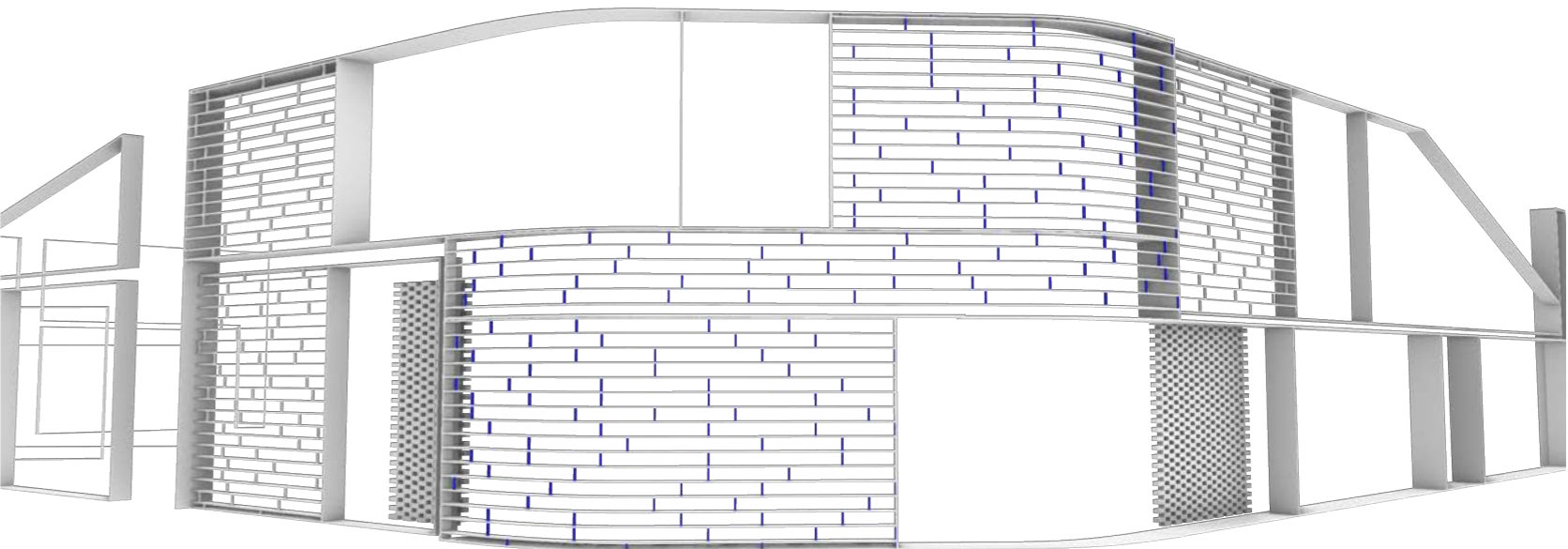
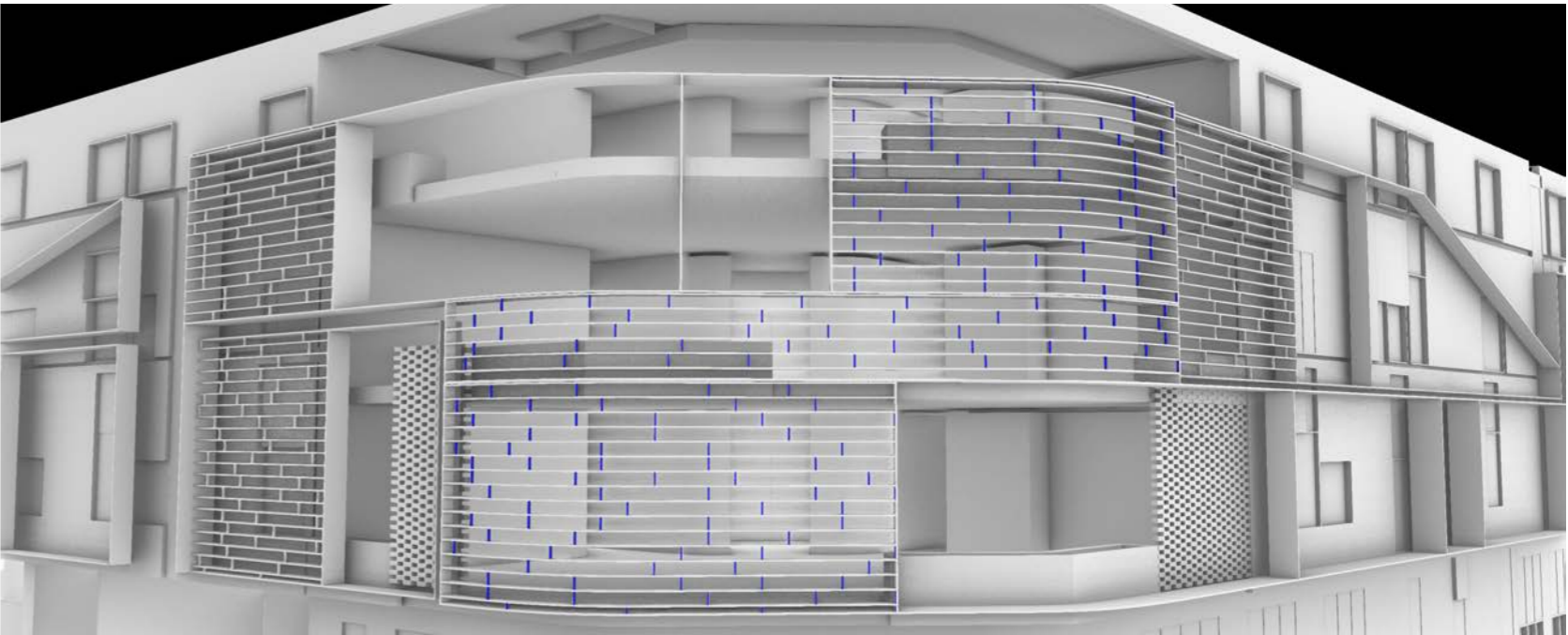
**Eta Aquariid meteor shower**, which occurs every May.

A meteor shower appears much like a shooting star in the sky.

**Wish Upon a shooting star.**

"We know it's a rare thing and it makes us feel special, we think it's either luck, destiny, a sign that something big is going to happen..."

It is proposed that the vertical elements of the Western Screen facade have integrated lighting. The light show will be preprogrammed to simulate the effects of shootings stars/meteor showers, and rain.



# Lighting Details

## Flextube (each segment)

- 1x 125mm Flextube Addressable Flat RGB Silicone
- 2x 01 Rear cable entry moulded end w/ 0.3m cable on each
- 1/8m Mounting extrusion
- 2x push lock connectors to join light to light – whether these are needed or not depends on the installation methodology. Note though, that without them, the wires still need to be joined somehow and the labour to do so is probably no cheaper.

## Control, Drivers and Programming

- 1x Colour Kinetics iPlayer 3 lighting controller
- 1x Planet IGS-801T Eth Switch
- 1x pureLED Merge Plus
- 1x DIN rail psu
- 3x pureled gecko (in weatherproof glanded enclosures)
- 3x HLG-240H-24
- 1x Small head end enclosure
- Onsite programming after hours - typical
- Offsite programming & show content generation - typical

\* Max 10 metre cable length between gecko and first light on each run – so these and their 24V power supply need to be installed pretty close to the lights. This can be on the façade if it needs to be but in a more accessible location would be better (ceiling space on the other side of the façade perhaps)

\* Cat6 Ethernet cable required between each Gecko and head end location (max 100m)

\* Each Gecko runs up to 4x strings of lights

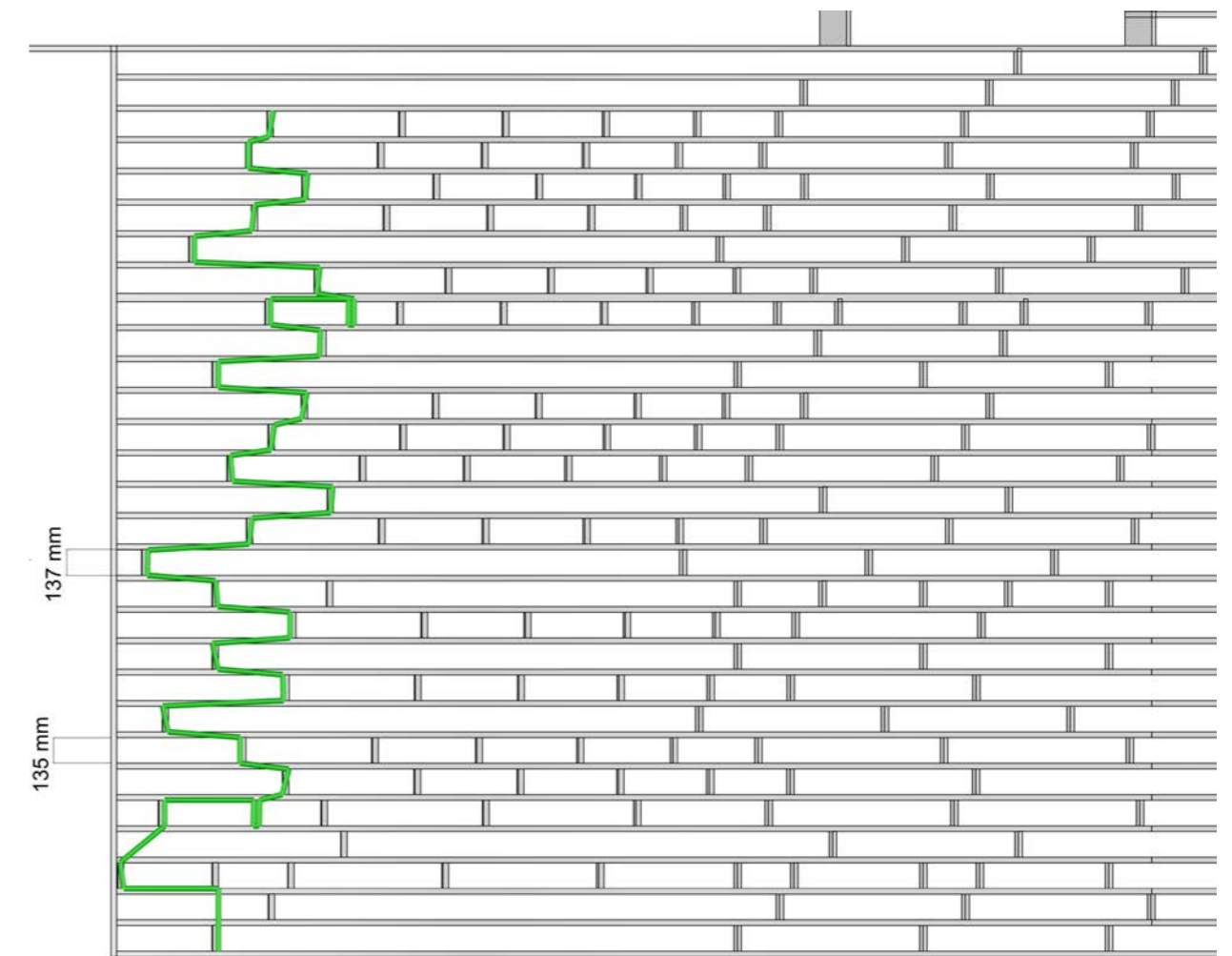
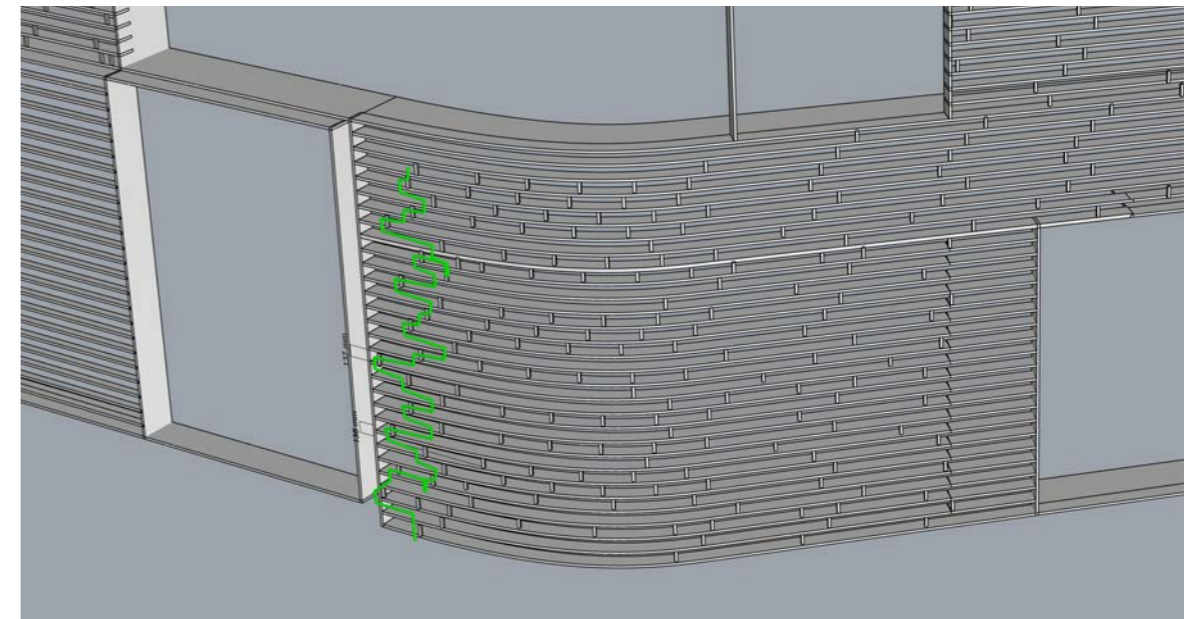
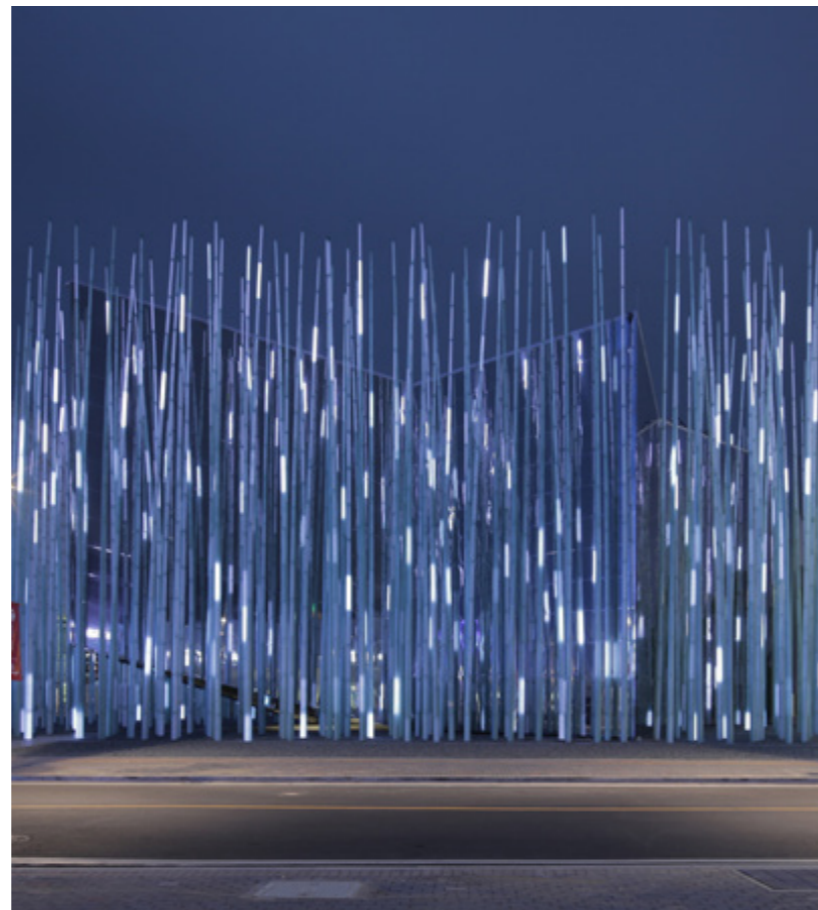
\* Each driver location needs a 240V supply (a GPO is fine)

\* Head end would be in an IP65 enclosure around 400x400x200 and can be up to 100 metres away (for Ethernet). It needs a 240V supply – a GPO would be fine here too.

## Installation

Electrician Required for the following;

- Install conduits, cabling, drivers and head end (we provide documentation for easy installation)
- Pull Ethernet cables from each of the three drivers back to the head end
- Install 240V supply at each of the three drivers and the head end
- Installing lights into the façade artwork will vary depending on the methodology. You could pre-fit the mounting extrusions in the factory and, in an ideal world, the lights too. You'd then lift the section into place and simply plug in the connectors from section to section to join it all together. This is the approach we would recommend, rather than installing lights at height.



**Typical Run of Lighting** [approx 13.5 lm]

# Lighting Product Specifications

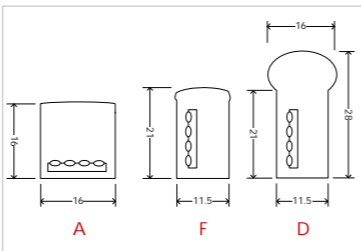


## Flextube – Addressable

PL-FlextubeAD-COLOUR-DIFFUSER/24V

The pureLED **FlexTube** range includes a wide selection of neon-like LED strip. Manufactured from UV resistant PVC and IP68 rated from factory, the **FlexTube** range has been designed for both indoor and outdoor environments and can be utilised in a wide range of applications including signage, cove lighting, feature lighting, decorative trim and more.

**Flextube Addressable** offers individually addressable segments of seven LEDs (125mm), controllable for colour and seamless dimming using **PureDrive** controllers. They are available in both flat and dome lensed side emitting profiles as well as Arching front emitting, allowing the product to curve into any desired shape with a curve diameter as little as 120mm. With **Flextube Addressable**, you can create any desired effect from subtly shifting glow to a spectacular light show using high speed motion effects. The possibilities are limited only by your imagination.



Part #	PL-FlexTubeAD-COLOUR-DIFFUSER/24V
Optics:	56 x SMD5050 LEDs per metre
Colour Temp:	Full Colour RGB, Full Colour RGBW (2400K/4000K), Dynamic White, Red, Amber, Blue, Green, White, Warm White. All colours addressable every 7 LEDs (125mm)
Impact Resistance:	IK08
Cut Length:	125mm (7 LEDs) Flat & Domed, 83.3mm Arching
Power: (At Maximum Output)	15W/M RGBW, 12W/M RGB, DW, R, G, B, A, W, WW
Minimum Curve Diameter:	120mm Flat & Domed, 300mm Arching
Beam Angle:	160°
IP Rating:	IP68 – Moulded Ends / IP67 – Clip-on Connectors
Maximum Continuous Length:	15 Metres RGB, DW, R, G, B, A, W, WW, 10 Metres RGBW

Colour options:  
RGBW (2700K), CCT RGBW (4000K),  
RGB, R, G, B, A, 2700, 3000, 3500, 4000,  
4500, 5700  
Diffuser options:  
F – Flat lens  
A – Arching  
D – Dome Lens

Contact your Distributor for more information

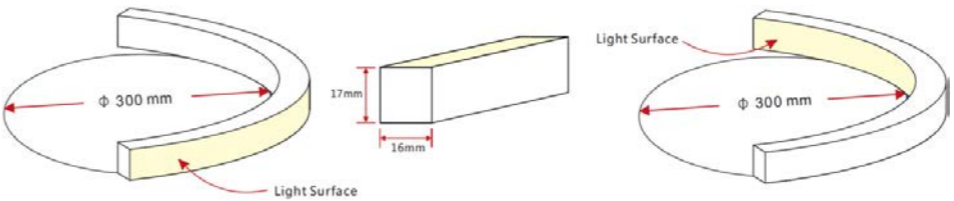
REV B.2 pureled.com.au



## Flextube – Addressable

PL-FlextubeAD-COLOUR-DIFFUSER/24V

### Dimensions



### Mounting Accessories

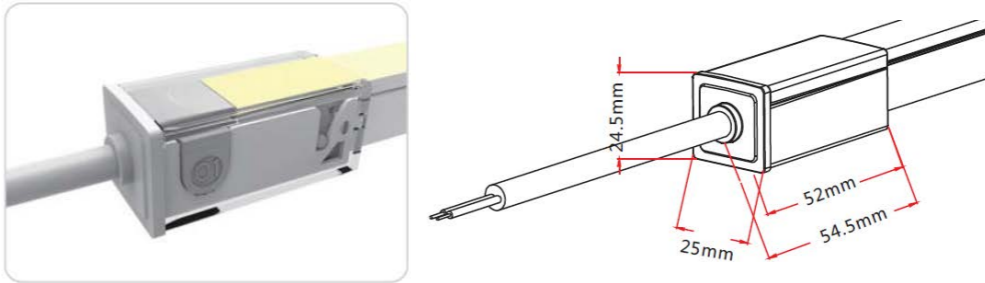
#### Plastic Profile

W*H(mm)	Standard Length (L:mm)	L1 (mm)	L2 (mm)	Screw Hole (Φ:mm)	Hole Number
19*21	300	50	200	Φ3.5	2
	500	50	200	Φ3.5	3
	1000	100	200	Φ3.5	5
	2000	100	200	Φ3.5	10

#### Aluminium Standard Profile

W*H(mm)	Standard Length (L:mm)	L1 (mm)	L2 (mm)	Screw Hole (Φ:mm)	Hole Number
19*18	35	17.5	/	Φ3.5	1
	50	25	/	Φ3.5	1
	500	50	200	Φ3.5	3
	1000	100	200	Φ3.5	5
	2000	100	200	Φ3.5	10

### Snap Type—IP67, Factory or Onsite Fitted End Connector





**ROSHANA**  
CARE

# PRELIMINARY BUDGET

## DUNCAN STREET NURSING HOME

Preliminary Budget - Integrated Public Art

28.07.2020

Public Artwork Expenditure Requirement (1% of Build cost) \$ 250,000.00

### DUNCAN STREET NURSING HOME

#### Artwork Expenditure

**Façade Screen Louvres (\$900 p/m2)** \$ 378,000.00

##### Includes

- Aluminium Powdercoated Profiles, includes rolling or forming of the profiles for the curves
- Aluminium RHS sections for vertical elements
- Secondary structural framing: Stainless Steel Tensioned Wire System, such as Locker Group's Atmosphere System
- Installation

**Lighting** \$ 45,000.00

##### Includes

- Hardware supply, Control set-up, Enclosure fit-out, LED modules assembly, ELV components connection, Lighting Programming, Commissioning, Documentation

SUBTOTAL \$ 423,000.00

#### Artist Fees

**Design Documentation Package** \$ 30,000.00

##### Includes

- Documentation, Design Revisions, Drafting of Shop drawings and Layout drawings, Drafting, Renders.]

**Aristis Fees, Project Management, Disbursements** \$ 25,000.00

##### Includes

- Insurances (Transits, Theft, Liabilities, Loss, Damage, Workers Comp); Meetings/Project Admin expenses; Studio outgoings; Project Photo-documentation; Maintenance + Operational Manual documentation; Project Management; Artist Fees]

TOTAL \$ 478,000.00

Exclusions: Primary Framing System

#### Quantities

- Façade Screen: 420m2
- Lighting (11 strings of lights): 300 Vertical elements <150mm, average of 28 verticals per run = 13.7 lm

# SUBCONSULTANTS



## KILMORE GROUP

Design, Engineering, Fabrication and Installation

Address: 36 Sarich Court, Osborne Park, WA, 6017

Tel: 08 6110 7117

Email: [info@kilmoregroup.com.au](mailto:info@kilmoregroup.com.au)

Website: [www.kilmoregroup.com.au](http://www.kilmoregroup.com.au)

Role: Kilmore would be engaged for engineering, manufacturing and installation of the facade screen artwork.



## LIGHT APPLICATION

Lighting Supply, Design and Programming

Address: Unit5/8 Hasler Road, Osborne Park, WA, 6017

Tel: 08 9240 6644

Email: [ben.ponting@lightapplication.com.au](mailto:ben.ponting@lightapplication.com.au)/ [tracy.cox@lightapplication.com.au](mailto:tracy.cox@lightapplication.com.au)

Website: [www.lightapplication.com.au](http://www.lightapplication.com.au)

Role: Supply and deliver lighting, including controlers, cables etc. Programming of lights

# APPENDIX 2a

## Daniel Giuffre

Co-Founder | Intensive Fields Lab [if/LAB]

daniel@intensivefieldslab.com  
0419098115  
11/65 Milligan St, Perth

Daniel has worked in Percent for Art as an artist and designer across Perth for the past 5 years. Daniel has outstanding expertise in delivering and managing large scale integrated and free-standing artworks. He strives to ensure all the clients, architects and builders needs are met, while working collaboratively and in tandem with the project delivery teams.

Over the past 5 years, Daniel has worked predominately in the public art sector across Perth, contributing to well over 50% of his workload and income. He has work in direct partnership as an emerging artist with a number of other local artists, including Rick Vermey, Jon Tarry, Brad Ladyman and Simon Gilby.

Daniel's roles in his previous projects has included concept design, design development, documentation, fabrication and contract administration in facilitating the delivery of both free-standing and integrated public artworks.

Daniel has considerable experience of working collaboratively with design teams, State and Local Government bodies and related professionals to realise well integrated site-specific artworks.

### EDUCATION

Bachelor of Environmental Design, University of Western Australia, 2008-2012

Master of Architecture, University of Western Australia, 2013-2015

Masters of Architecture, University of Arizona, Tucson, 2011 (UWA Exchange)

### PROFESSIONAL

Co-founder, Intensive Fields Lab, 2015 - Current

Design consultation across disciplines including sculpture, installation, building design and construction. Development and delivery of computational design training.

Computational Design Specialist, felix. Laboratories Pty Ltd, 2014 - 2017

Computational design strategic vision, development of R+D programme, support of project delivery and design, training development and delivery.

Sessional Staff Member, The University of Western Australia, 2014 - 2017

### SELECTED PROJECT

Cygn, Public Artwork, East Perth, In progress, 2020

Client: City of Perth, in direct collaboration with Jon Tarry  
Free standing piece made from composite

Hamilton St, Public Artwork, In Progress, 2020

Client: Sovereign Building Company,  
Free-standing Sculpture

Waterford Public Artwork, In Progress, 2020

Client: Linic Group, In direct collaboration with Rick Vermey  
Integrated Artwork using custom brick shapes

Yanchep Secondary College Stage 2 Public Artwork, 2020 (In construction)

Client: BMW, In direct collaboration with Rick Vermey  
Integrated artwork, brick, glazing and CFC soffit

'Visa Versa' Public Artwork, Queenslea Aged Care, Claremont - 2020 (In Construction)

Collaboration with Rick Vermey: Architect: Hassell Architects  
Custom 3D concrete pattern and brick design

The Precinct Public Artwork, 2020

Client: Norup Wilson, In Collaboration with Rick Vermey  
Aluminium bird beak facade and custom programmable lighting  
'Velocities', Public Artwork, Velocity Apartments, Cannington - In construction

Client: Pathfinder Property, Collaboration with Rick Vermey, Architect: Plus Architecture

Treatment to concrete retaining wall, carpark screens and soffit

Cecil Avenue Paving Pattern Design

Landscape Architect: PLACE Laboratory

Developed a custom tool for the designers to test different paving patterns for 800lm of paving

The Crest, Public Artwork, Goodwood Parade, Burswood, 2019

Lead Artist: Rick Vermey. Collaboration in design development and technical support

Facade design and shop drawings delivery

FuBa - Future Bayswater Concept Masterplan, 2018

Architect: Plus Architecture

Schematic design and design development of Bayswater concept masterplan

Anemoi, LIV Apartments Public Artwork, Fremantle, 2018

Collaboration with Rick Vermey

Complex geometric soffit design integrated into the architecture

Yanchep Secondary School Public Artwork, 2018

Lead Artist: Rick Vermey. Collaboration in design development and technical support

'Metamorphosis' Sculpture - Public Art, Kingsway Christian College, 2017

Collaboration with Tristan Morgan + Brad Ladyman

Wickham Street, Public Art Concept Design, 2015

Lead Artist: Simon Gilby, Collaboration in design development and technical support

Subiaco Sculpture pARk, PIAF: Perth International Arts Festival, City of Subiaco, 2015

Curator: Gemma Weston

Role: Augmented Reality Curator and digital artist

Augmented Australia, 2014 Venice Architecture Biennale: Team WA (w/ Felix Laboratories), 2014

3D Designer and Animator

Springs, East Perth 2014

Lead Artist: Jon Tarry, Technical assistance, software implementation, collaboration for public artworks

# Daniel Giuffre

Co-Founder | Intensive Fields Lab [if/LAB]

daniel@intensivefieldslab.com  
0419098115  
11/65 Milligan St, Perth

## INVITED LECTURES/WORKSHOPS/TALKS

'The Intersection of Art and Architecture, Hassell, 2018  
Presentation to Hassell Perth Office.

'Parametric Speculations in Art and Architecture, Hames Sharley, 2017  
Talk to Hames Sharley National office via conference call from Perth.

Two Worlds Lecture and 2 Day Workshop, PVI Collective, 2015

## MEMBERSHIPS

Artsource PLUS Membership

NAVA Premium Membership

## REFEREES

Helen Curtis  
APPARATUS  
m: +61 413 56 0413  
w: apparatus.net.au  
e: helen@apparatus.net.au

Alison Barrett  
Public Art Consultant  
m: 0419192657  
e: ambpublicart@gmail.com

## QUALIFICATION AS AN EMERGING ARTIST.

**A person who has proven experience in completing public, community or cultural art projects.**

Daniel has a clear proven track record of having worked in direct partnership with a number of established artist. Daniel has been involved in all projects from start to finish, including: EOI Submissions, Client Meetings, Engagement of Consultants and fabrications, contract administrator, design, documentation of site supervision of installation of medium to large scaled public artworks.

**A person who earns more than 50% of their income from arts related activities.**

Working in the public art sector makes up nearly 70% of Daniels yearly income. Daniel has been working in public art since before having graduated with a M.ARCH at UWA.

**A person with 5 years experience or more in public art.**

Daniel has worked in public art for over 5 years, with his first experience to working on a percent for art public artwork being with Jon Tarry in 2014. At the time, Jon was the Dean of Art at UWA when Daniel was engaged to assist Jon. This is where he's interest in Public Art started.

## VISUAL DOCUMENTATION LIST - SELECTED WORKS

### 1. ANEMOI LIV APARTMENTS



Artists: Daniel Giuffre + Rick Vermeij (Collaborative Partnership)

Location: Fremantle, LIV Apartments

Year Completed: 2018

Client: Defence Housing Australia

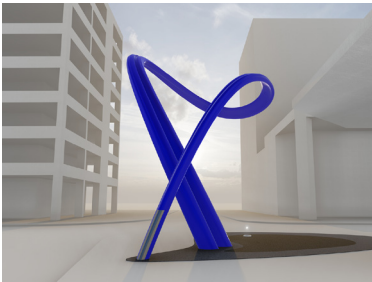
Size: 200m<sup>2</sup>

Materials: Trespa Panels, 840x Colour Kinetic Lights

Budget: \$500,000

Concept: Inspired by the Fremantle Doctor, this artwork's geometry was driven by digital modelling techniques to simulate the effects of the Freo Doctor on a surface. The lights are controlled live by wind speed and wind direction.

### 2. CYGNA EAST END



Artists: Daniel Giuffre and Jon Tarry (Collaborative Partnership)

Location: East Perth, East End Revitalisation Project

Year Completed: Currently in progress

Client: City of Perth

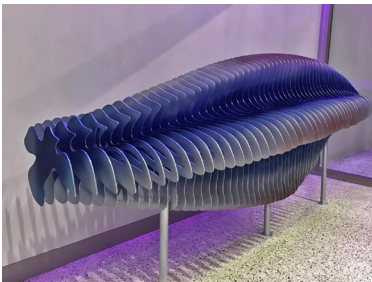
Size: 6m tall x 4.5m wide

Materials: composite carbon fibre, stainless steel, in ground lighting

Budget: \$297,000

Concept: Inspired by the looping profile of the Swan River when viewed from an aerial and the Swans neck

### 3. METAMORPHOSIS KCC



Artists: Daniel Giuffre, Brad Ladyman and Tristan Morgan (Collaborative Partnership)

Location: Kingsway Christian College

Year Completed: 2017

Client: Kingsway Christian College

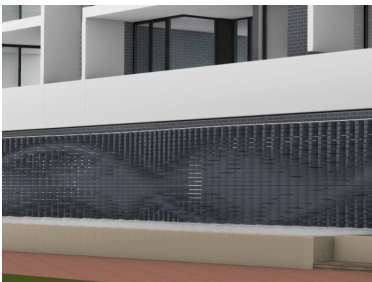
Size: 3m x 1.5m x 0.8m

Materials: Aluminium Sheetmetal, Paint

Budget: \$35,000

Concept: Developed for a Christian College, the brief was to 'Glorify God'. Conceptually we decided to take an abstract approach. The form was digitally generated by 'lofting' a profile of a fish, crucifix and a dove into an abstract form, which was then sliced up into sectional profiles.

### 4. WATERFORD APARTMENTS



Artists: Daniel Giuffre + Rick Vermeij (Collaborative Partnership)

Location: Cygnia Pde, Waterford

Year Completed: Currently in progress

Client: Linic Group

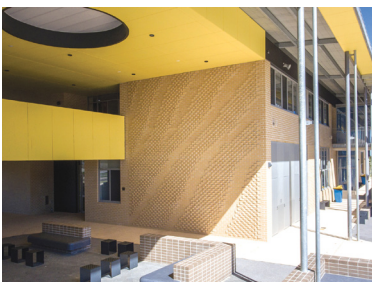
Size: 120 m<sup>2</sup>

Materials: Custom Brick, Aluminium subframe

Budget: \$120,000

Concept: Inspired by its proximity to the adjacent swamp and river, this integrated piece draws inspiration from the motion of swans in flight.

### 5. RHYTHM + FLOW STAGE 1



Artists: Rick Vermeij + Daniel Giuffre (Collaborative Partnership)

Location: Yanchep Secondary College

Year Completed: 2018

Client: Department of Education

Size: 120 lm screen / 162m<sup>2</sup> wall

Materials: 4 Custom brick types made specifically for the project. Brick types were made in collaboration with Brikmakers. Custom profiled aluminium Louvres

Budget: \$318,000

Concept: Inspired by the local sand dunes in Yanchep and the patterns created by the winds.

## VISUAL DOCUMENTATION LIST

### 6. YANCHEP SC STAGE 2



Artists: Daniel Giuffre + Rick Vermey (Partnership)

Location: Yanchep Secondary College

Year Completed: Currently in progress

Client: Department of Education

Size: 43 m2 Glazing, 82m2 Brick and 160m2 of CFC soffit with custom pattern

Materials: CNC Routed CFC Sheets, Saddleback Brick and Inagink Colour back glazing

Budget: \$102,000

Concept: Inspired by the oceans shoreline and the way the ocean layers ripples of water over the sand.

### 7. QUEENSLEA AGED CARE



Artists: Daniel Giuffre + Rick Vermey (Partnership)

Location: Claremont on the Park

Year Completed: Currently in progress

Client: Oryx Communities

Size: 170 m2 Precast, 85m2 Brick

Materials: Custom concrete formliner, Bricks

Budget: \$450,000

Concept: Homeliness, knitwear, familiarity, comfort and warmth are words that resulted from a thematic brainstorm around the idea of an Aged care facility. The pattern was influenced by pressed metal ornamentation found in Claremont, combined with handcrafted knitware and crocheted blankets.

### 8. QUEENSLEA AGEDCARE



Artists: Daniel Giuffre + Rick Vermey (Partnership)

Location: Claremont on the Park

Year Completed: Currently in progress

Client: Oryx Communities

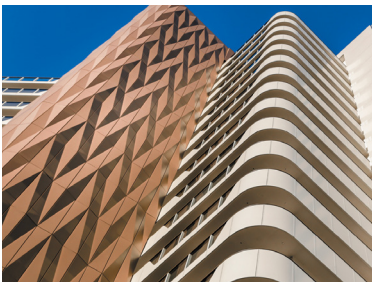
Size: 170 m2 Precast, 85m2 Brick

Materials: Custom concrete formliner, Bricks

Budget: \$450,000

Concept: Homeliness, knitwear, familiarity, comfort and warmth are words that resulted from a thematic brainstorm around the idea of an Aged care facility. The pattern was influenced by pressed metal ornamentation found in Claremont, combined with handcrafted knitware and crocheted blankets.

### 9. CREST APARTMENTS



Artists: Rick Vermey (Lead artist), Daniel Giuffre

Location: Goodwood Pde, Burswood

Year Completed: 2018

Client: Norup Wilson

Size: 760m2

Materials: 362 aluminium cassette facade panels, bronze anodised, 18 unique panel types

Budget: \$685,000

Concept: Due to the apartments proximity to the Swan river and its cast views over the water, this concept was inspired by how the setting sun in the afternoon reflects over the river.

### 10. PRECINCT APARTMENTS



Artists: Rick Vermey (Lead artist), Daniel Giuffre

Location: Canning Hwy, Mt Pleasant

Year Completed: 2020

Client: Norup Wilson

Size: 170m2

Materials: Folded sheetmetal facade panels, structural aluminium subframe, powdercoated white, 2100 diagrid units, 5 unique grid panel aperture types, Philips Color Kinetix LMX LED lighting nodes featuring 7 custom dynamic lighting programmes.

Budget: \$500,000

Concept: These diagrid panels are inspired by local birdlife. The birdbeak panels are then backlit with lighting suggestive of river currents and water flows.

## Previous Work

### **ANEMOI** LIV APARTMENTS

Artists: Daniel Giuffre + Rick Vermey  
Technical Specialist: if/LAB  
Client: Defence Housing Australia  
Year Completed: 2018

Architect: Hassell Architects  
Fabricator: Denmac  
Contractor: Georgiou Group  
Budget: \$500,000

Size: 200m<sup>2</sup>  
Location: Queen Victoria St, Fremantle  
Lighting: Light Application  
Art Consultant: Helen Curtis (Apparatus)

Materials: Soffit cladding with 3 material finishes  
840 integrated LED lighting modules dynamically animated by a weather sensor on the roof

Rick and I were awarded this project as a partnership.



## Previous Work

### **RHYTHM AND FLOW** YANCHEP SECONDARY COLLEGE

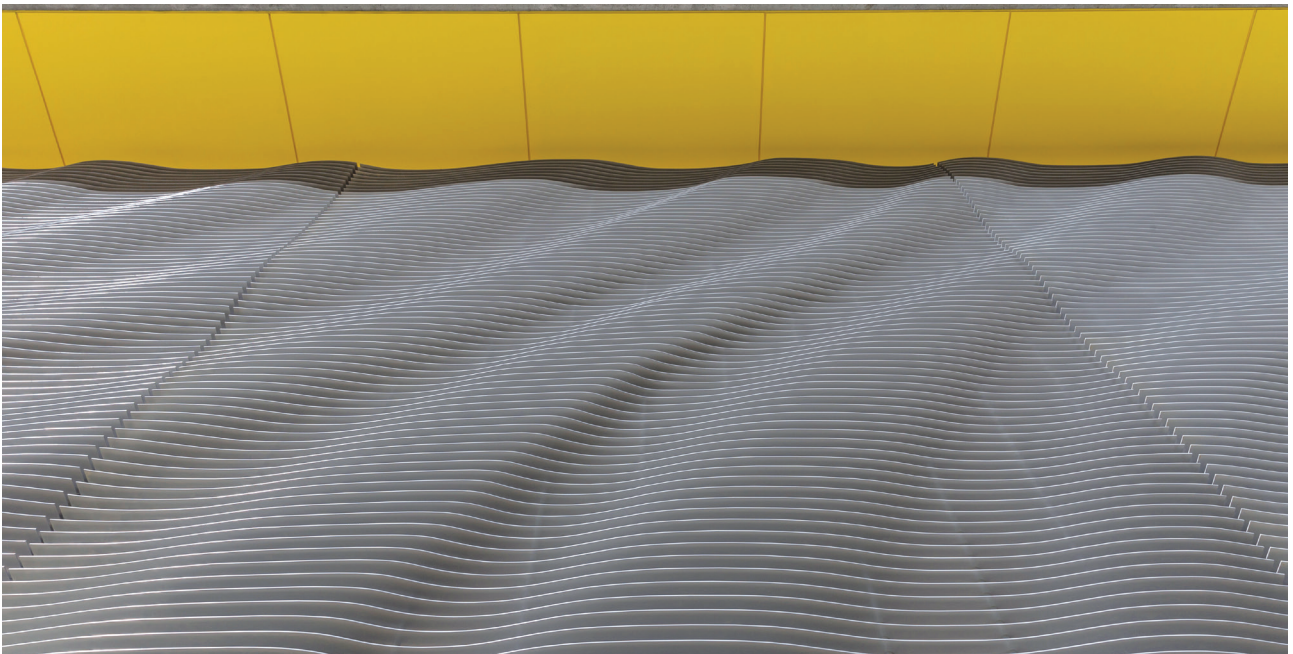
Artists: Rick Vermey + Daniel Giuffre  
Technical Specialist: if/LAB  
Client: Department of Education  
Year Completed: 2018

Architect: With\_Architecture Studio  
Contractor: PS Structures  
Budget: \$318,000  
Size: 120 lm screen / 162m2 wall

Fabricator: Colt (Louvers)  
Fabricator: Brikmakers (Bricks)  
Fabricator: Complete Window Systems  
Glazing Production: Cooling Brothers

Materials: 4 Custom brick types made specifically for the project. Brick types were made in collaboration with Brikmakers. Custom profiled aluminium Louvres

For this project I worked with Rick in developing the concept and pattern for the artwork facade. and was integral in the documentation and delivery of the project.



## Previous Work

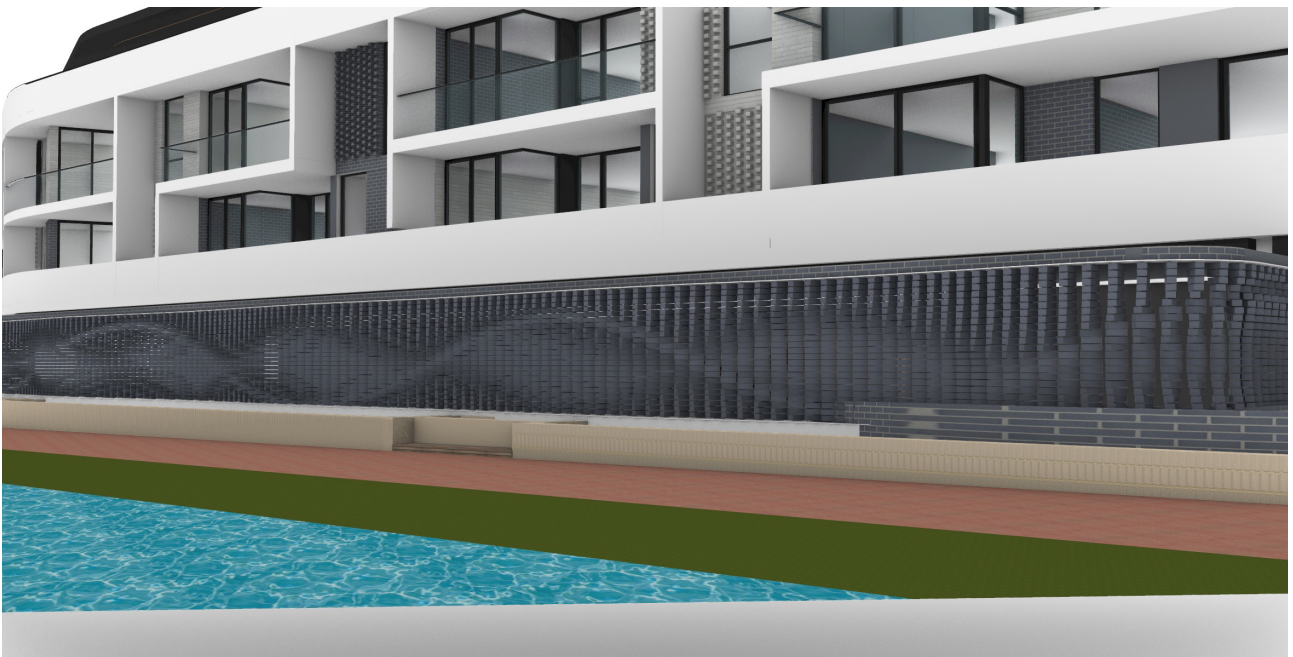
### **WATERFORD** INTEGRATED PUBLIC ARTWORK

Artists: Daniel Giuffre + Rick Vermey  
Technical Specialist: if/LAB  
Client: Linic Group  
Year Completed: In Progress

Architect: MJA Studio  
Contractor: Daly and Shaw  
Budget: \$120,000  
Size: 120 m2 Twisting Brick Screen

Fabricator: TBC

Materials: 4 Custom brick types made specifically for the project. Brick types were made in collaboration with Brikmakers. Custom profiled aluminium Louvres



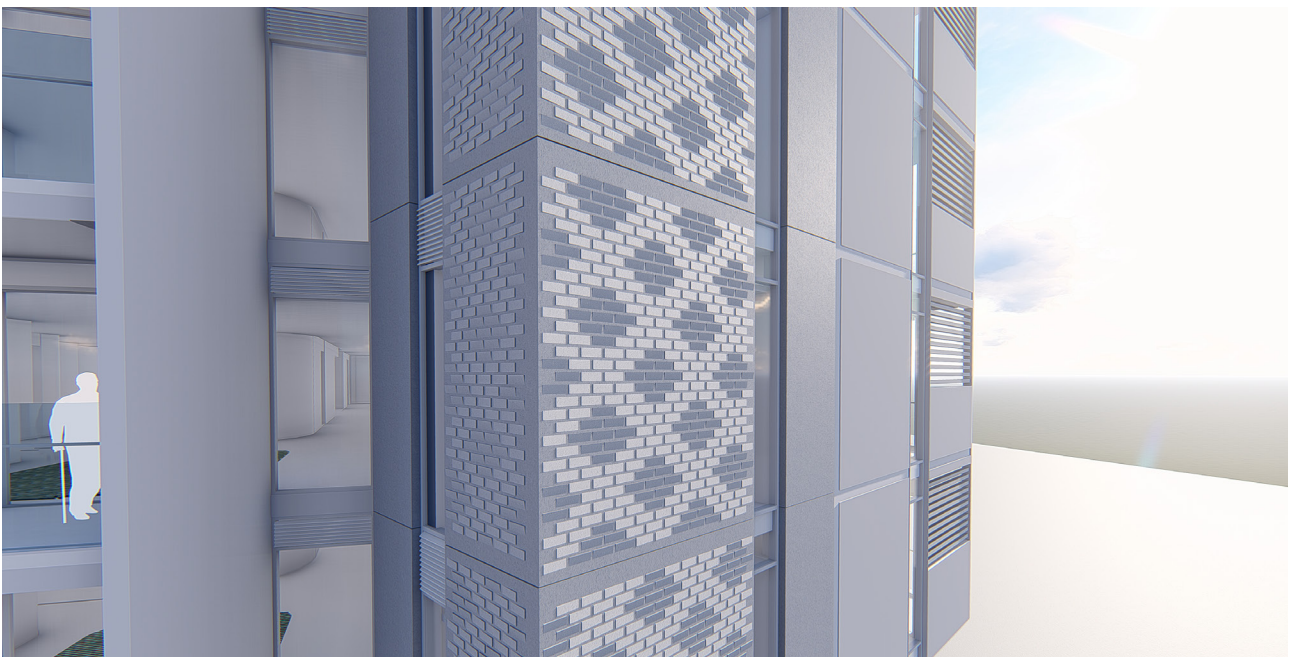
## Previous Work

### **THE QUEENSLEA** INTEGRATED PUBLIC ARTWORK

Artists: Daniel Giuffre + Rick Vermeij  
Technical Specialist: if/LAB  
Client: Oryx  
Year Completed: In Progress

Architect: Hassell  
Contractor: Multiplex  
Budget: \$450,000  
Size: 170 m2 Precast, 85m2 Brick

Materials: 4 Custom brick types made specifically for the project. Brick types were made in collaboration with Brikmakers. Custom profiled aluminium Louvres



## Previous Work

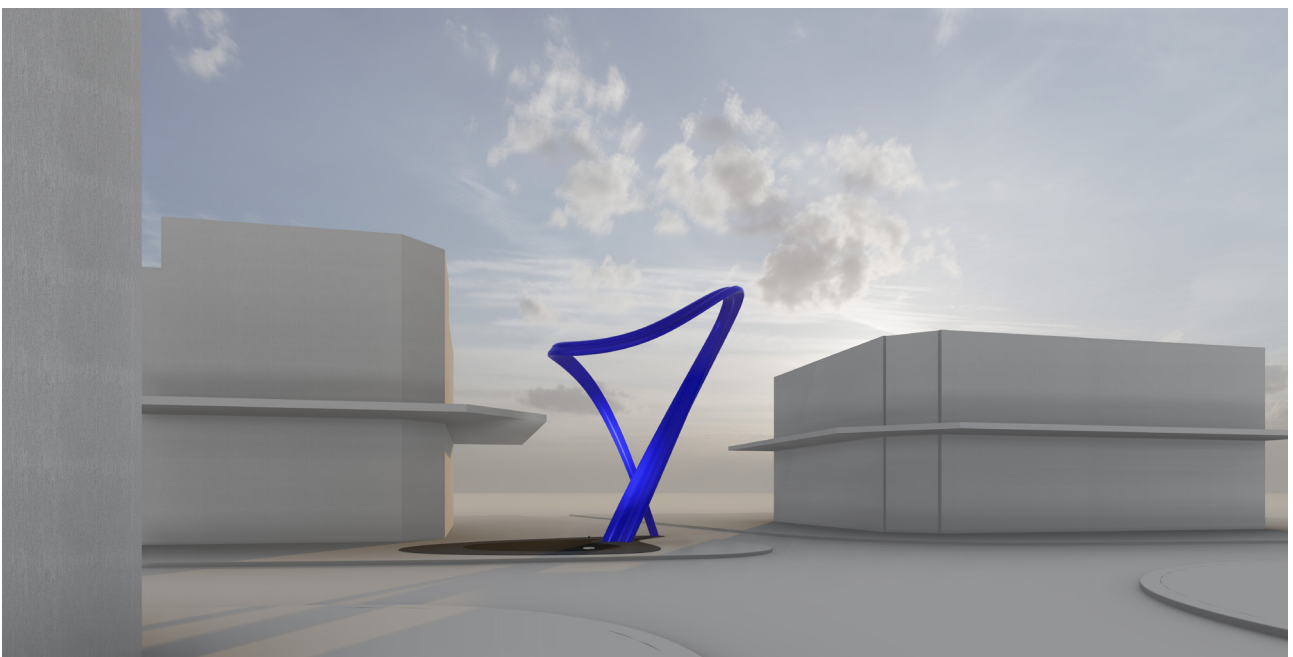
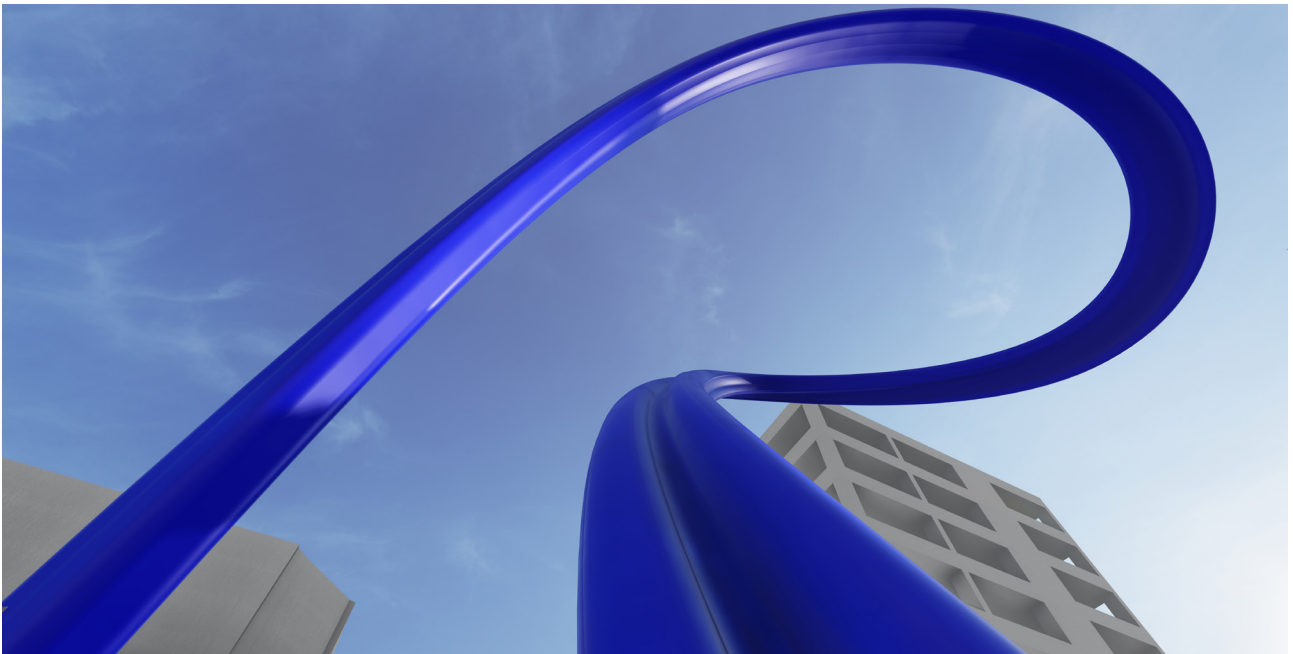
### **CYGNA** EAST PERTH

Artist: Daniel Giuffre + Jon Tarry  
Technical Support: if/LAB  
Client: City of Perth

Status: In Progress  
Engineer: TBC  
Fabricator: TBC

Contractor: TBC  
Budget: \$297,00  
Size: 6m tall x 4.5m wide

Materials: composite carbon fibre, stainless steel, inground lighting



## Previous Work

### **THE CREST** THE CREST APARTMENTS, BURSWOOD

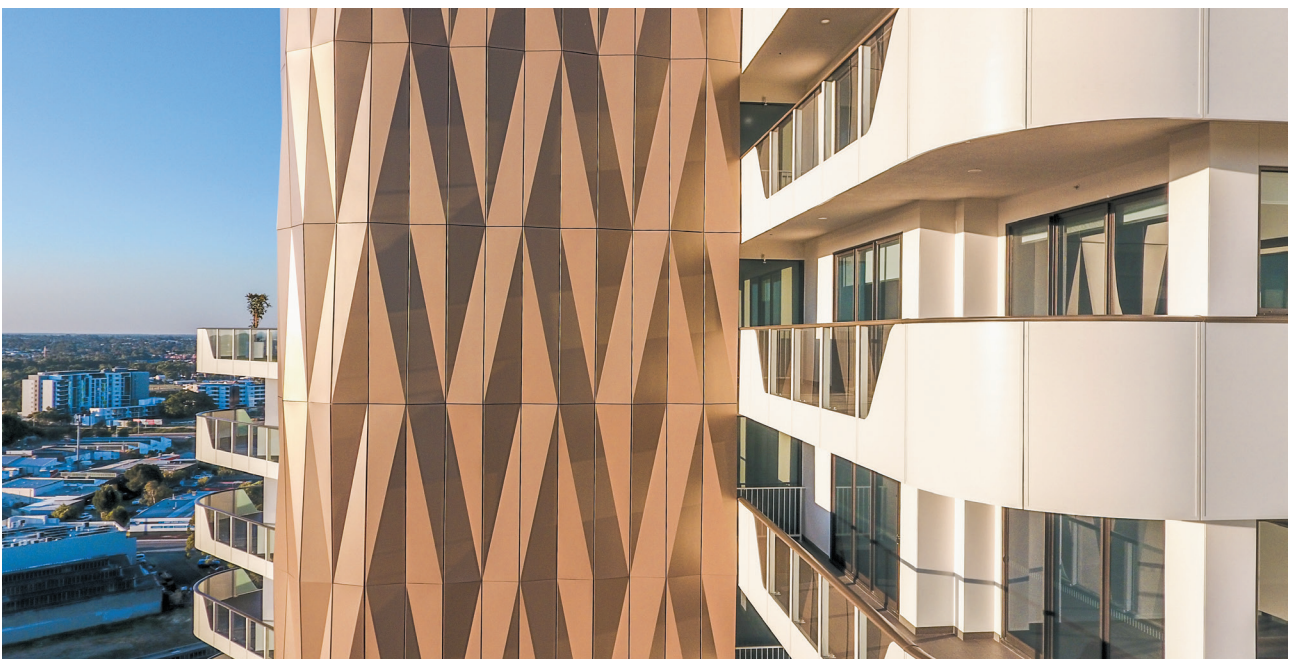
Artist: Rick Vermey and Daniel Giuffre  
Design Assist: if/LAB  
Client: Norup Wilson

Status: Completed 2018  
Architect: Woods Bagot  
Fabricator: Denmac

Contractor: BGC  
Budget: \$685,000  
Size: 760m2

Materials: 362 aluminium casset facade panels, bronze anodised, 18 unique panels types

For this project I worked with Rick in developing the concept and pattern for the artwork facade. and was integral in the documentation and delivery of the project.



## PREVIOUS PROJECTS

### THE PRECINT CANNING HWY

Artist: Rick Vermey  
Support: Daniel Giuffre  
Client: Norup Wilson

Status: Completed 2020  
Architect: Woods Bagot  
Fabricator: Denmac

Contractor: BGC  
Budget: \$540,00  
Size: 170m<sup>2</sup>

Materials: folded sheet-metal facade panels, structural aluminium subframe, powder-coated white, 2100 diagrid units, 5 unique grid panel aperture types, Philips Color Kinetix LMX LED lighting nodes featuring 7 custom dynamic lighting programmes.

