

FOR USE IN REPORTS - NOT TO STANDARD SCALE

NORTH

USED ON

UNLESS OTHERWISE SPECIFIED

1. INTERPRET DIMENSIONAL TOLERANCES AS PER } A.S.1100 PART 201
2. INTERPRET GEOMETRIC TOLERANCES AS PER }
3. FOR DEFINITION OF MACHINING SYMBOLS AS PER }
4. FOR DEFINITION OF WELDING SYMBOLS TO A.S. 1101.3 }
5. TOLERANCES - DIMENSIONAL

MACHINING 500mm & BELOW ±0.25mm; ABOVE 500mm ± 0.50mm
STRUCTURAL 150mm & BELOW ±1.00mm; ABOVE 150mm ± 1.50mm
CASTINGS 300mm & BELOW ±1.50mm; ABOVE 300mm ± 3.00mm
ANGULAR: + 1/2"

N	MK	AMENDED DA PLAN	MK	18/08/25	
M	AS	ISSUED FOR DA	AS	12/6/25	
I	AS	SCALE FIXED		3/6/25	
K	AS	- NOISE WALL ADDED		28/5/25	
J	AS	- SUBSTATION TREE BEING RETAINED		23/5/25	
I	AS	- RAMP MODIFIED TO SUIT PATH		22/5/25	
H	AS	- PLANT CORE COLUMNS, SUBSTATION, TIPPER		9/5/25	
G	AS	- OPS FEEDBACK INCORPORATED		23/4/25	
REV		DETAILS OF ALTERATIONS	DWN	DATE	CHK

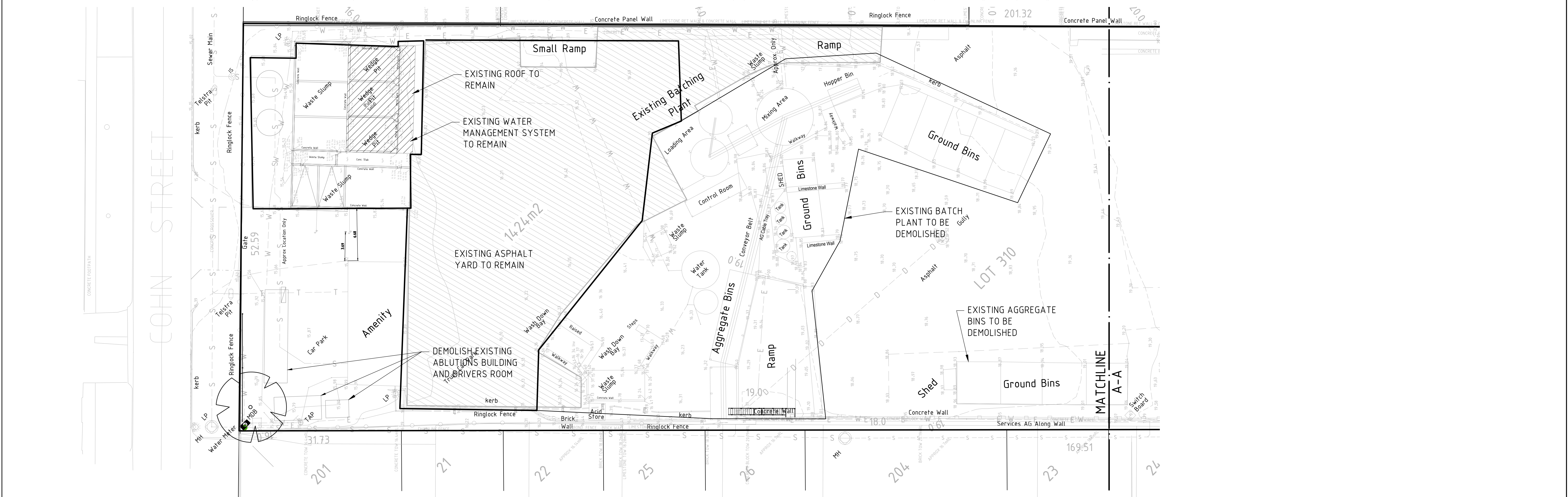
Holcim Australia & New Zealand (HANZ) OPERATIONS & ENGINEERING

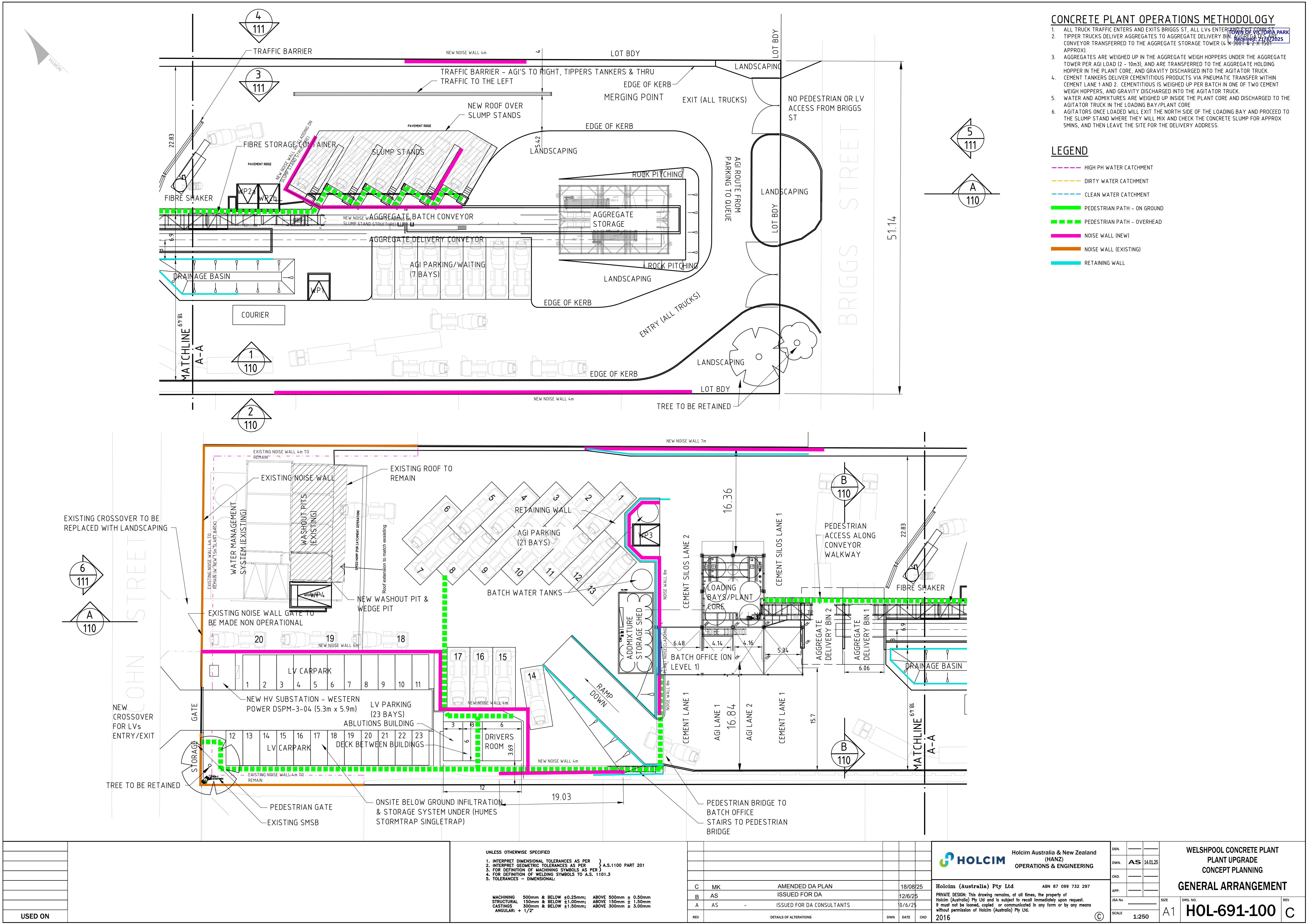
Holcim (Australia) Pty Ltd ABN 87 099 732 297

PRIVATE DESIGN: This drawing remains, at all times, the property of Holcim (Australia) Pty Ltd and is subject to recall immediately upon request. It must not be loaned, copied or communicated in any form or by any means without permission of Holcim (Australia) Pty Ltd. 2016

DSN.		
DWN.	AS	14/01/25
CHK.		
APP.		
JSA No.		
SCALE	1:500	

SIZE	DRG. NO.	REV
A1	HOL-691-001	N

[illegible]



CONCRETE PLANT OPERATIONS METHODOLOGY

1. ALL TRUCK TRAFFIC ENTERS AND EXITS BRIGGS ST, ALL LVs ENTER AND EXIT JOHN STREET
2. TIPPER TRUCKS DELIVER AGGREGATES TO AGGREGATE DELIVERY BIN, AGGREGATE IS LOADED ON CONVEYOR TRANSFERRED TO THE AGGREGATE STORAGE TOWER (4 X 300 T & 2 X 150T APPROX).
3. AGGREGATES ARE WEIGHED UP IN THE AGGREGATE WEIGH HOPPERS UNDER THE AGGREGATE TOWER PER AGI LOAD (2 - 10m3), AND ARE TRANSFERRED TO THE AGGREGATE HOLDING HOPPER IN THE PLANT CORE, AND GRAVITY DISCHARGED INTO THE AGITATOR TRUCK.
4. CEMENT TANKERS DELIVER CEMENTITIOUS PRODUCTS VIA PNEUMATIC TRANSFER WITHIN CEMENT LANE 1 AND 2. CEMENTITIOUS IS WEIGHED UP PER BATCH IN ONE OF TWO CEMENT WEIGH HOPPERS, AND GRAVITY DISCHARGED INTO THE AGITATOR TRUCK.
5. WATER AND ADMIXTURES ARE WEIGHED UP INSIDE THE PLANT CORE AND DISCHARGED TO THE AGITATOR TRUCK IN THE LOADING BAY/PLANT CORE
6. AGITATORS ONCE LOADED WILL EXIT THE NORTH SIDE OF THE LOADING BAY AND PROCEED TO THE SLUMP STAND WHERE THEY WILL MIX AND CHECK THE CONCRETE SLUMP FOR APPROX 5MINS, AND THEN LEAVE THE SITE FOR THE DELIVERY ADDRESS.

LEGEND

- HIGH PH WATER CATCHMENT
- DIRTY WATER CATCHMENT
- CLEAN WATER CATCHMENT
- PEDESTRIAN PATH - ON GROUND
- PEDESTRIAN PATH - OVERHEAD
- NOISE WALL (NEW)
- NOISE WALL (EXISTING)
- RETAINING WALL

UNLESS OTHERWISE SPECIFIED

1. INTERPRET DIMENSIONAL TOLERANCES AS PER A.S.1100 PART 201
2. INTERPRET GEOMETRIC TOLERANCES AS PER A.S.1100 PART 201
3. FOR DEFINITION OF MACHINING SYMBOLS AS PER A.S.1100.3
4. FOR DEFINITION OF WELDING SYMBOLS TO A.S. 1101.3
5. TOLERANCES - DIMENSIONAL:

MACHINING 500mm & BELOW ±0.25mm; ABOVE 500mm ± 0.50mm
STRUCTURAL 150mm & BELOW ±1.00mm; ABOVE 150mm ± 1.50mm
CASTINGS 300mm & BELOW ±1.50mm; ABOVE 300mm ± 3.00mm
ANGULAR: + 1/2"



Holcim Australia & New Zealand
(HANZ)
OPERATIONS & ENGINEERING

Holcim (Australia) Pty Ltd

ABN 87 099 732 297

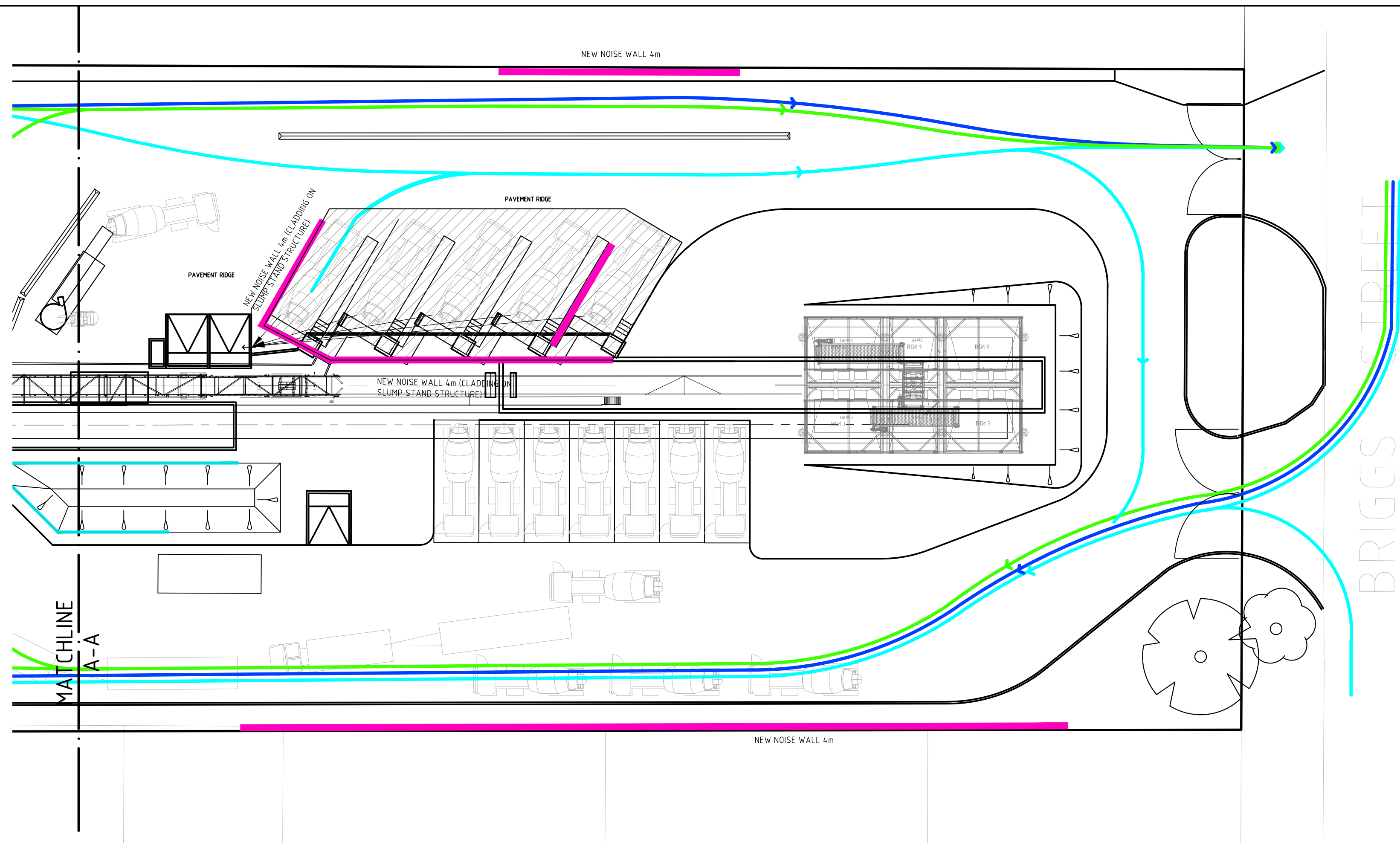
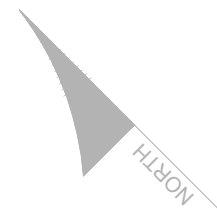
PRIVATE DESIGN: This drawing remains, at all times, the property of Holcim (Australia) Pty Ltd and is subject to recall immediately upon request. It must not be loaned, copied or communicated in any form or by any means without permission of Holcim (Australia) Pty Ltd.

DSN.	---
DWN.	AS 14/01/25
CHK.	---
APP.	---
JSA No	---
SCALE	1:250

WELSHPOOL CONCRETE PLANT
PLANT UPGRADE
CONCEPT PLANNING

GENERAL ARRANGEMENT

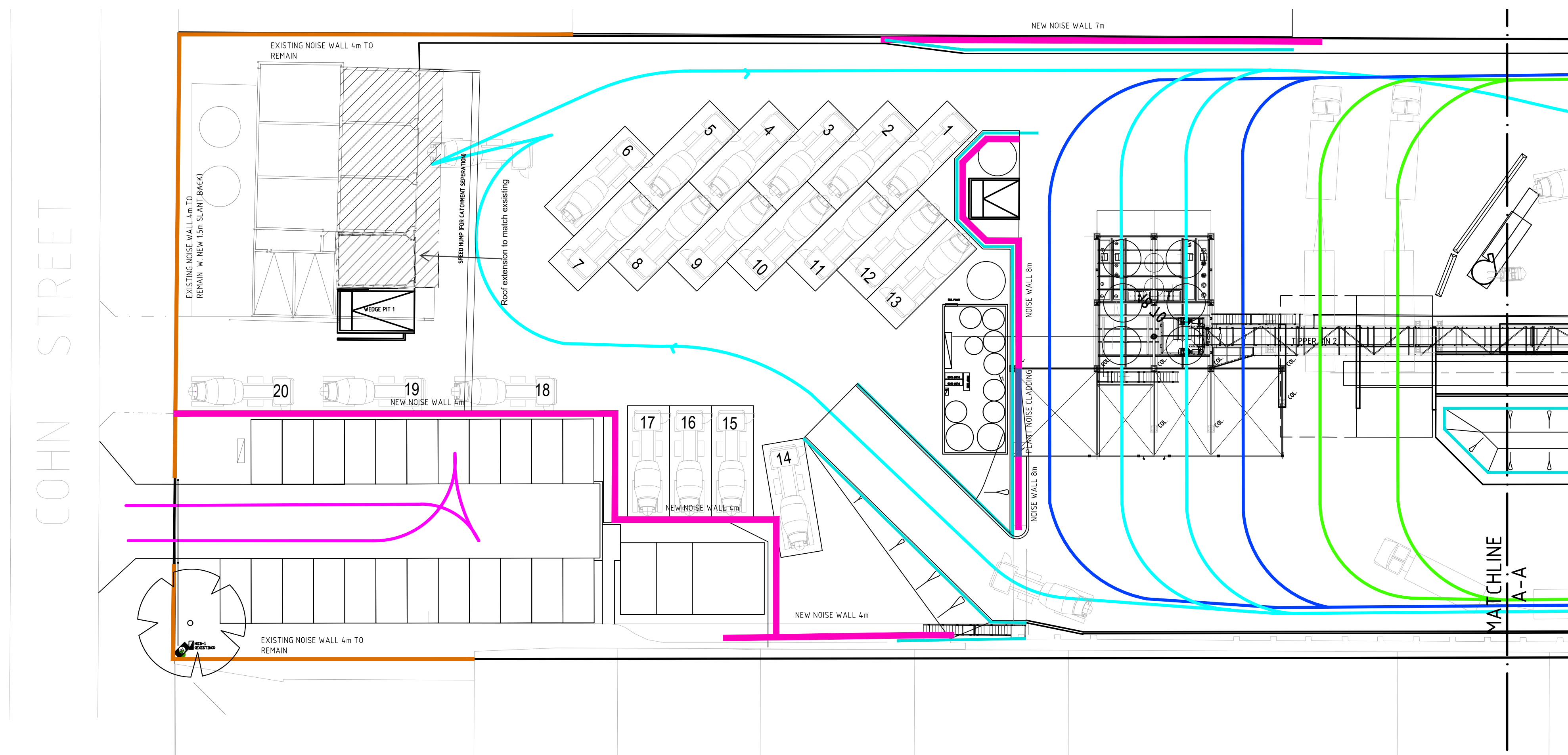
SIZE A1
DRG. NO. **HOL-691-100**
REV C



LEGEND

- NOISE WALL (NEW)
- NOISE WALL (EXISTING)
- RETAINING WALL
- AGITATOR TRUCK PATH
- TIPPER TRUCK PATH (AGGREGATES)
- CEMENT TANKER PATH
- LIGHT VEHICLE PATH

TOWN OF VICTORIA PARK
Received: 21/8/2025



UNLESS OTHERWISE SPECIFIED

- INTERPRET DIMENSIONAL TOLERANCES AS PER A.S.1100 PART 201
- INTERPRET GEOMETRIC TOLERANCES AS PER A.S.1100 PART 201
- FOR DEFINITION OF MACHINING SYMBOLS AS PER A.S.1101.3
- FOR DEFINITION OF WELDING SYMBOLS TO A.S. 1101.3
- TOLERANCES - DIMENSIONAL:

MACHINING 500mm & BELOW $\pm 0.25\text{mm}$; ABOVE 500mm $\pm 0.50\text{mm}$
STRUCTURAL 150mm & BELOW $\pm 1.00\text{mm}$; ABOVE 150mm $\pm 1.50\text{mm}$
CASTINGS 300mm & BELOW $\pm 1.50\text{mm}$; ABOVE 300mm $\pm 3.00\text{mm}$
ANGULAR: $+ 1/2^\circ$



Holcim Australia & New Zealand
(HANZ)
OPERATIONS & ENGINEERING

Holcim (Australia) Pty Ltd ABN 87 099 732 297
PRIVATE DESIGN: This drawing remains, at all times, the property of
Holcim (Australia) Pty Ltd and is subject to recall immediately upon request.
It must not be loaned, copied or communicated in any form or by any means
without permission of Holcim (Australia) Pty Ltd.
2016

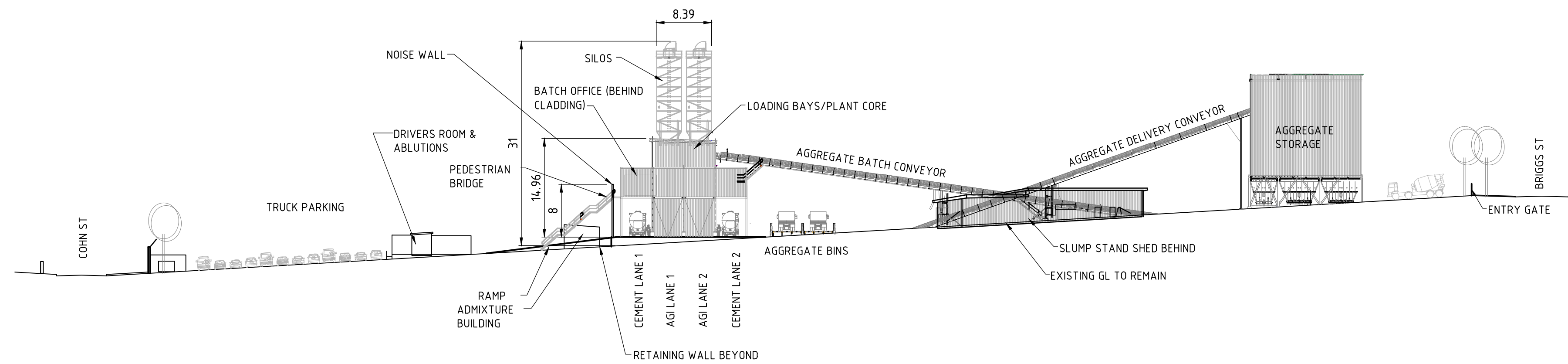
DSN. _____
DWN. AS 14.01.25
CHKD. _____
APP. _____
JSA No. _____
SCALE 1:250

WELSHPOOL CONCRETE PLANT
PLANT UPGRADE
CONCEPT PLANNING
TRAFFIC AND NOISE WALL PLAN

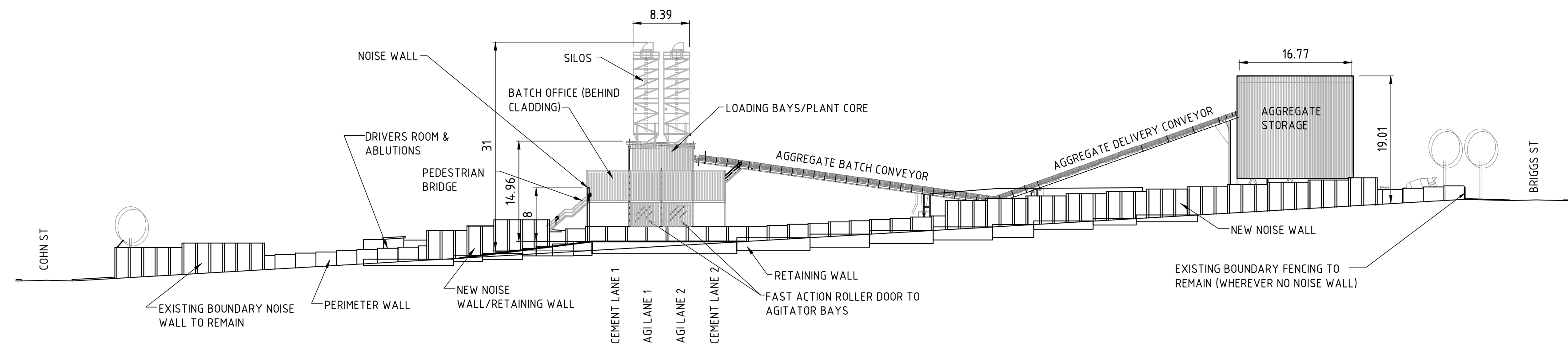
SIZE A1
DRG. NO. HOL-691-101
REV C

USED ON

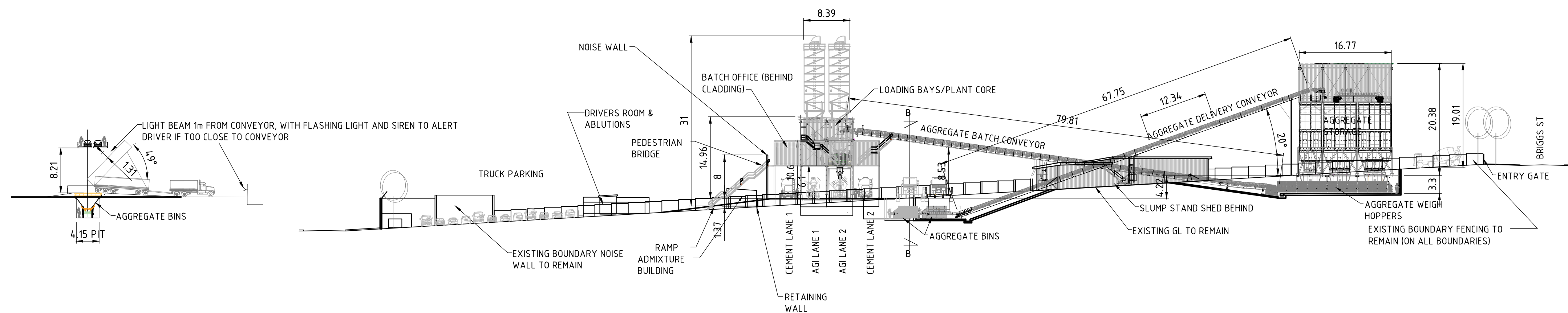




ELEVATION 1
SCALE 1:500

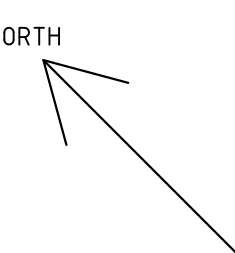
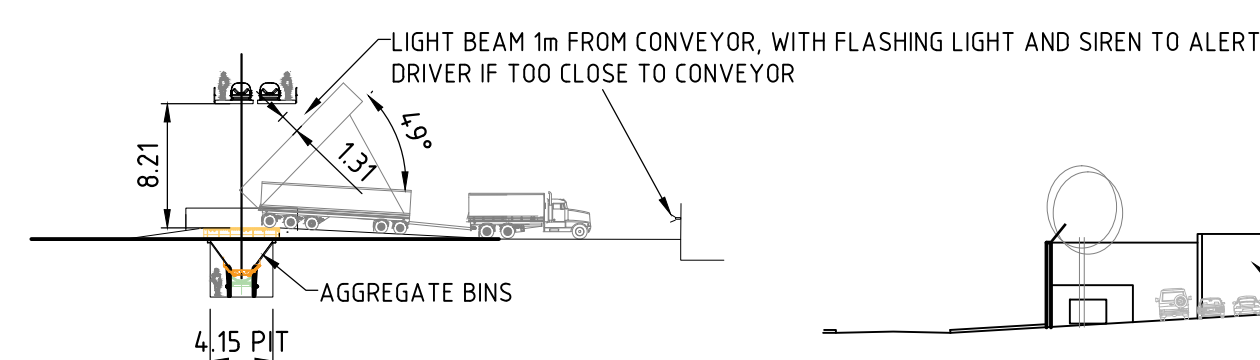


ELEVATION 2
SCALE 1:500



SECTION A-A
SCALE 1:500

SECTION B-B
SCALE 1:500



- UNLESS OTHERWISE SPECIFIED
1. INTERPRET DIMENSIONAL TOLERANCES AS PER A.S.1100 PART 201
 2. INTERPRET GEOMETRIC TOLERANCES AS PER A.S.1100 PART 201
 3. FOR DEFINITION OF MACHINING SYMBOLS AS PER A.S.1100 PART 201
 4. FOR DEFINITION OF WELDING SYMBOLS TO A.S. 1101.3
 5. TOLERANCES - DIMENSIONAL:

MACHINING 500mm & BELOW ± 0.25 mm; ABOVE 500mm ± 0.50 mm
STRUCTURAL 150mm & BELOW ± 1.00 mm; ABOVE 150mm ± 1.50 mm
CASTINGS 300mm & BELOW ± 1.50 mm; ABOVE 300mm ± 3.00 mm
ANGULAR: $+ 1/2^\circ$

REV	DETAILS OF ALTERATIONS	DWN	DATE	CHK
C	AMENDED DA PLAN	MK	18/08/25	
B	ISSUED FOR DA	AS	12/6/25	
A	ISSUED FOR DA CONSULTANTS		0/6/25	

HOLCIM Holcim Australia & New Zealand (HANZ) OPERATIONS & ENGINEERING

Holcim (Australia) Pty Ltd ABN 87 099 732 297

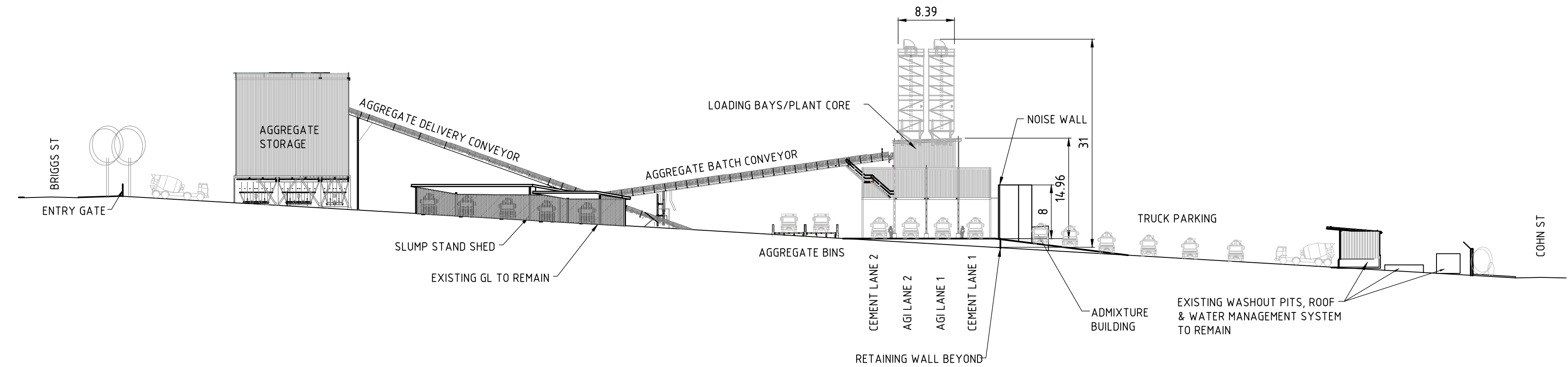
PRIVATE DESIGN: This drawing remains, at all times, the property of Holcim (Australia) Pty Ltd and is subject to recall immediately upon request. It must not be loaned, copied or communicated in any form or by any means without permission of Holcim (Australia) Pty Ltd.

2016

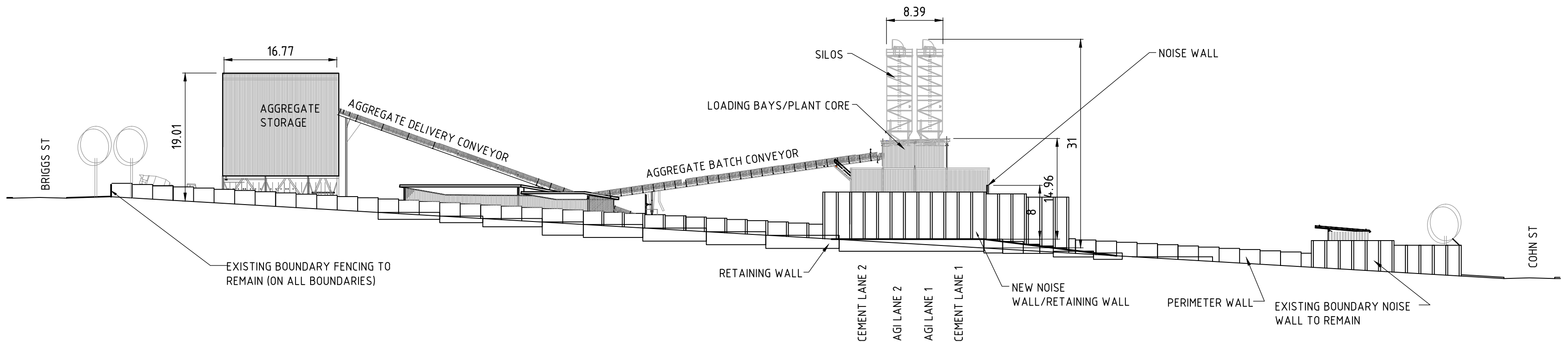
DSN.	
DWN.	AS 14/01/25
CHK.	
APP.	
JSA No.	
SCALE	1:500

WELSHPOOL CONCRETE PLANT
PLANT UPGRADE
CONCEPT PLANNING
ELEVATIONS & SECTIONS

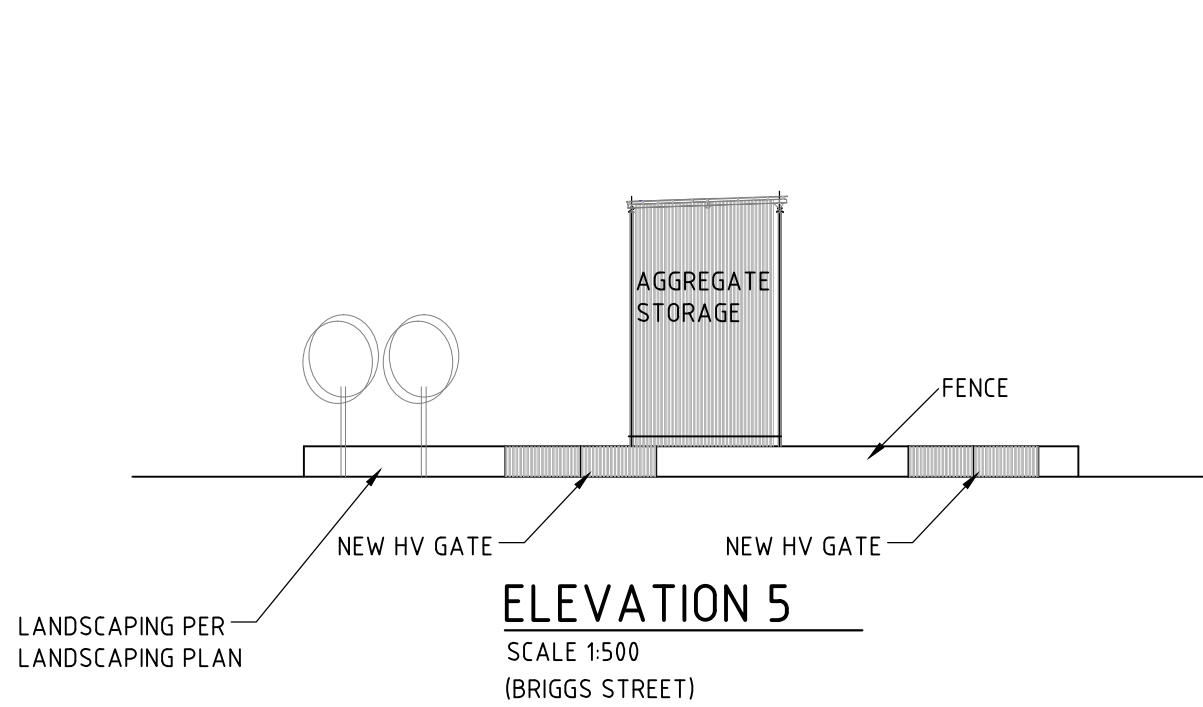
SIZE	DRG. NO.	REV
A1	HOL-691-110	C



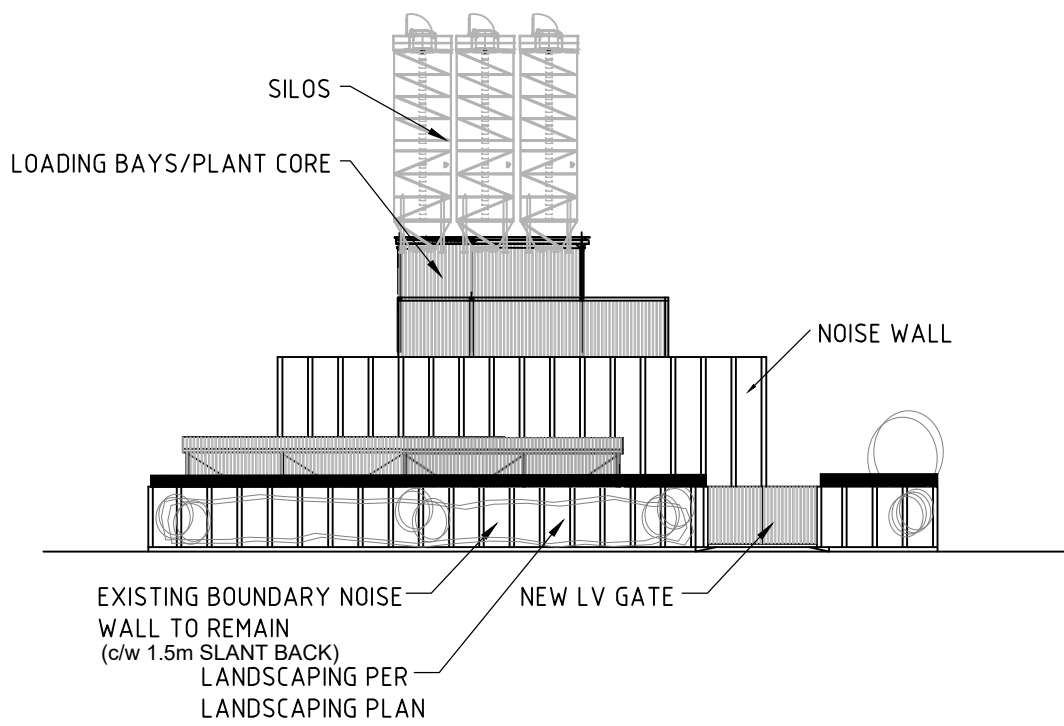
ELEVATION 3
SCALE 1:500



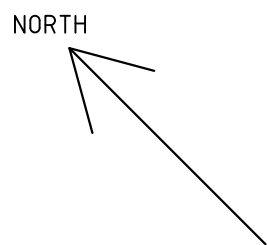
ELEVATION 4
SCALE 1:500



ELEVATION 5
SCALE 1:500
(BRIGGS STREET)



ELEVATION 6
SCALE 1:500
(COHN STREET)



UNLESS OTHERWISE SPECIFIED

1. INTERPRET DIMENSIONAL TOLERANCES AS PER A.S.1100 PART 201
2. INTERPRET GEOMETRIC TOLERANCES AS PER A.S.1100 PART 201
3. FOR DEFINITION OF MACHINING SYMBOLS AS PER A.S.1100 PART 201
4. FOR DEFINITION OF WELDING SYMBOLS TO A.S. 1101.3
5. TOLERANCES - DIMENSIONAL

MACHINING 500mm & BELOW $\pm 0.25\text{mm}$; ABOVE 500mm $\pm 0.50\text{mm}$
STRUCTURAL 150mm & BELOW $\pm 1.00\text{mm}$; ABOVE 150mm $\pm 1.50\text{mm}$
CASTINGS 300mm & BELOW $\pm 1.50\text{mm}$; ABOVE 300mm $\pm 3.00\text{mm}$
ANGULAR: $+ 1/2^\circ$

REV	DETAILS OF ALTERATIONS	DWN	DATE	CHKD
C	MK	AMENDED DA PLAN	MK	18/08/25
B	AS	ISSUED FOR DA	AS	12/6/25
A	AS	- ISSUED FOR DA CONSULTANTS		0/6/25

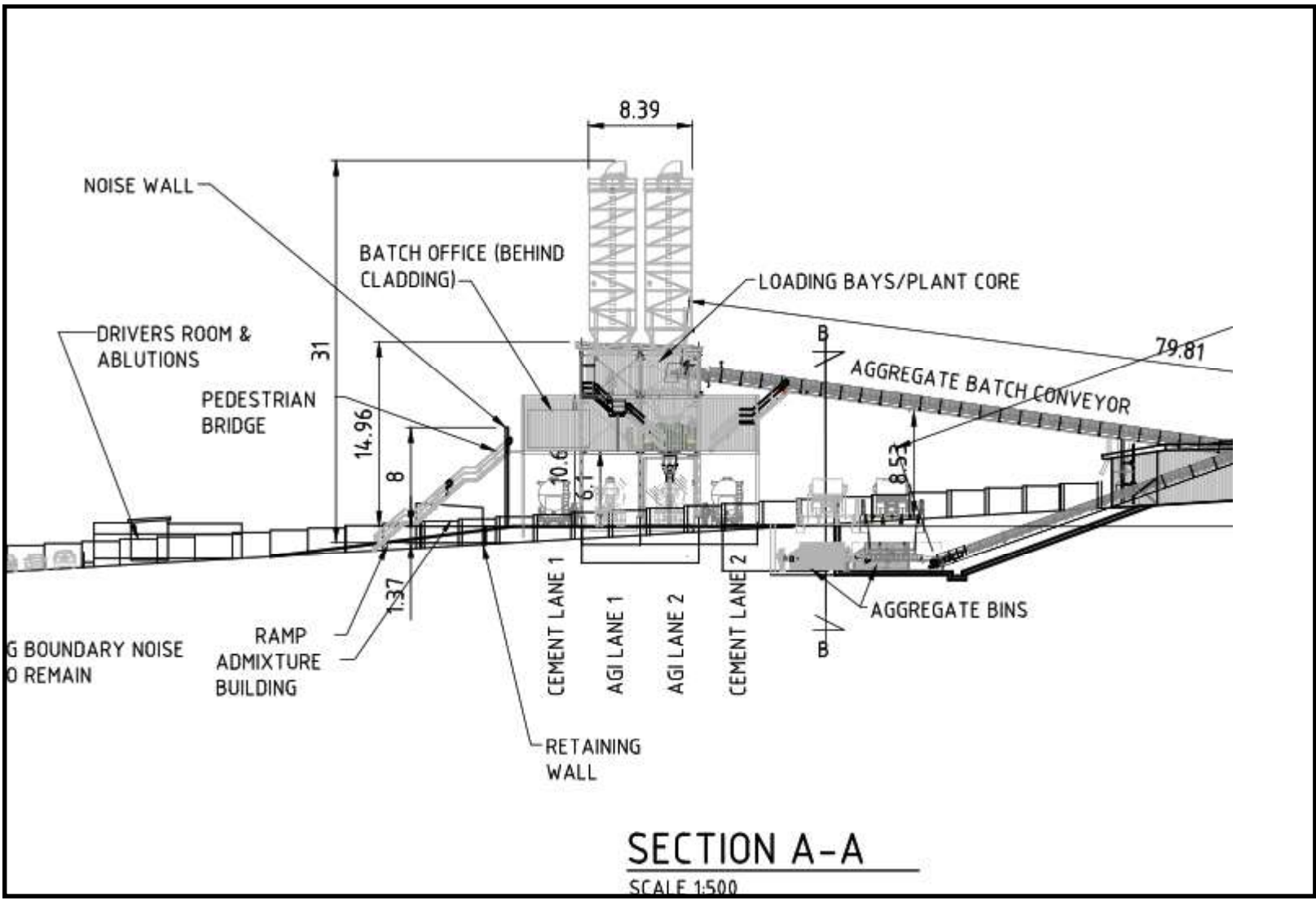
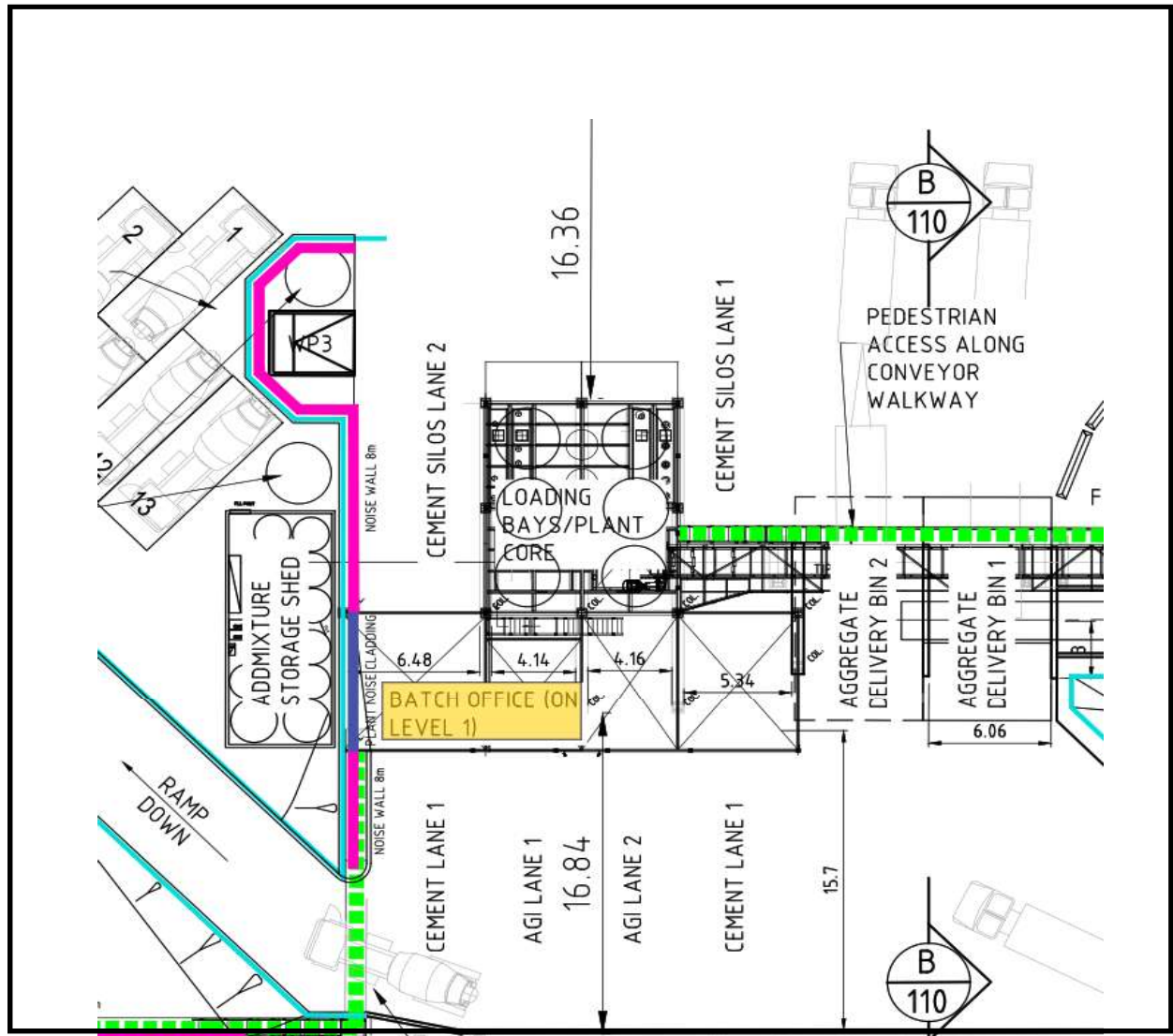
HOLCIM Holcim Australia & New Zealand (HANZ) OPERATIONS & ENGINEERING

Holcim (Australia) Pty Ltd ABN 87 099 732 297
PRIVATE DESIGN: This drawing remains, at all times, the property of Holcim (Australia) Pty Ltd and is subject to recall immediately upon request. It must not be loaned, copied or communicated in any form or by any means without permission of Holcim (Australia) Pty Ltd.
2016

DSN.	
DWN.	AS 14/01/25
CHKD.	
APP.	
JSA No.	
SCALE	1:500

WELSHPOOL CONCRETE PLANT PLANT UPGRADE CONCEPT PLANNING ELEVATIONS			
SIZE	DRG. NO.	REV	
A1	HOL-691-111	C	

SECTIONS SHOWING BATCH HUT LOCATION



REVISIONS					
REV	DESCRIPTION	DRAWN	DATE	APPROVED	DATE
A	FOR COMMENTS	A.REX	11OCT23		
B	WELSHPOOL BATCH OFFICE USED	A.REX	17OCT23		
C	LOADING THRU PLANT WOK	A.REX	29NOV23		
D	BATCH OFFICE MOVED	A.REX	04DEC23		
E	DA AMENDMENT	M.TALIB	21AUG25		

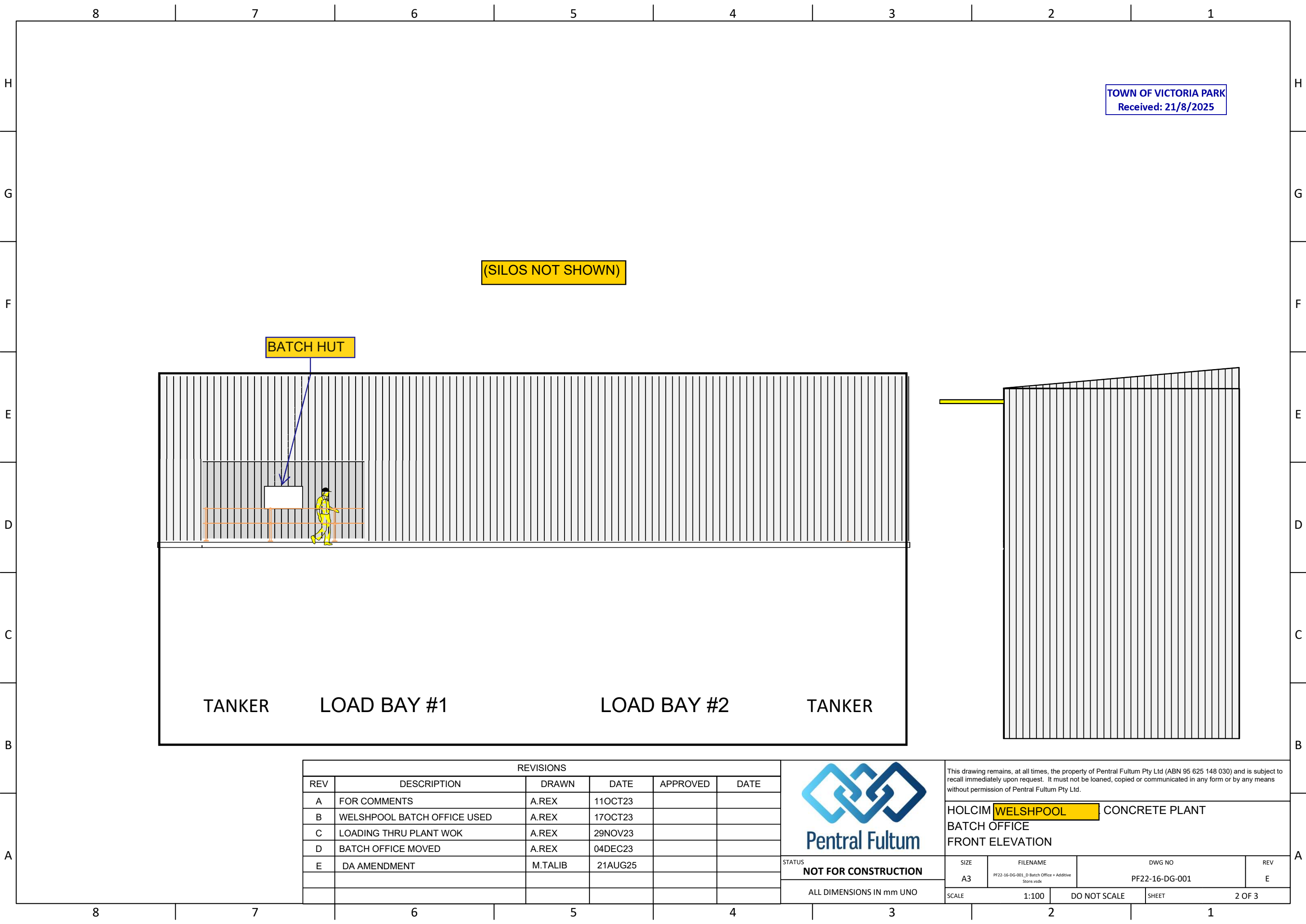


STATUS
NOT FOR CONSTRUCTION

ALL DIMENSIONS IN mm UNO

This drawing remains, at all times, the property of Pentral Fultum Pty Ltd (ABN 95 625 148 030) and is subject to recall immediately upon request. It must not be loaned, copied or communicated in any form or by any means without permission of Pentral Fultum Pty Ltd.

HOLCIM WELSHPOOL CONCRETE PLANT BATCH OFFICE			
SIZE A3	FILENAME PF22-16-DG-001_D Batch Office + Additive Store.vsd	DWG NO PF22-16-DG-001	REV E
SCALE 1:500	DO NOT SCALE	SHEET 1 OF 3	



TOWN OF VICTORIA PARK
Received: 21/8/2025

(SILOS NOT SHOWN)

BATCH HUT

TANKER

LOAD BAY #1

LOAD BAY #2

TANKER

REVISIONS					
REV	DESCRIPTION	DRAWN	DATE	APPROVED	DATE
A	FOR COMMENTS	A.REX	11OCT23		
B	WELSHPOOL BATCH OFFICE USED	A.REX	17OCT23		
C	LOADING THRU PLANT WOK	A.REX	29NOV23		
D	BATCH OFFICE MOVED	A.REX	04DEC23		
E	DA AMENDMENT	M.TALIB	21AUG25		



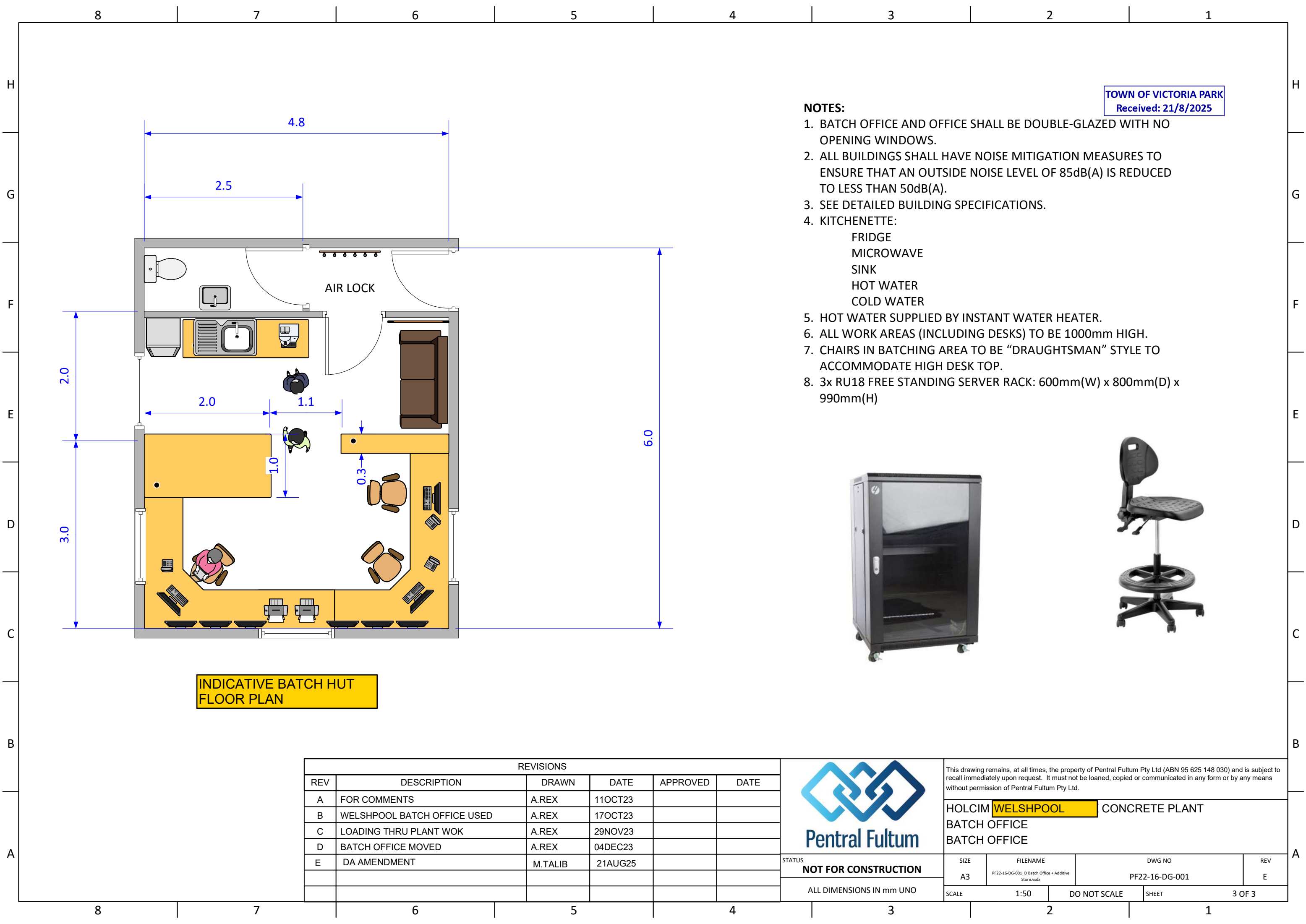
STATUS
NOT FOR CONSTRUCTION

ALL DIMENSIONS IN mm UNO

This drawing remains, at all times, the property of Pentral Fultum Pty Ltd (ABN 95 625 148 030) and is subject to recall immediately upon request. It must not be loaned, copied or communicated in any form or by any means without permission of Pentral Fultum Pty Ltd.

HOLCIM **WELSHPOOL** CONCRETE PLANT
BATCH OFFICE
FRONT ELEVATION

SIZE	FILENAME	DWG NO	REV
A3	PF22-16-DG-001_D Batch Office + Additive Store.vsdx	PF22-16-DG-001	E
SCALE		SHEET	
1:100		DO NOT SCALE	2 OF 3



TOWN OF VICTORIA PARK
Received: 21/8/2025

NOTES:

1. BATCH OFFICE AND OFFICE SHALL BE DOUBLE-GLAZED WITH NO OPENING WINDOWS.
2. ALL BUILDINGS SHALL HAVE NOISE MITIGATION MEASURES TO ENSURE THAT AN OUTSIDE NOISE LEVEL OF 85dB(A) IS REDUCED TO LESS THAN 50dB(A).
3. SEE DETAILED BUILDING SPECIFICATIONS.
4. KITCHENETTE:
 - FRIDGE
 - MICROWAVE
 - SINK
 - HOT WATER
 - COLD WATER
5. HOT WATER SUPPLIED BY INSTANT WATER HEATER.
6. ALL WORK AREAS (INCLUDING DESKS) TO BE 1000mm HIGH.
7. CHAIRS IN BATCHING AREA TO BE "DRAUGHTSMAN" STYLE TO ACCOMMODATE HIGH DESK TOP.
8. 3x RU18 FREE STANDING SERVER RACK: 600mm(W) x 800mm(D) x 990mm(H)



INDICATIVE BATCH HUT
FLOOR PLAN

REVISIONS					
REV	DESCRIPTION	DRAWN	DATE	APPROVED	DATE
A	FOR COMMENTS	A.REX	11OCT23		
B	WELSHPOOL BATCH OFFICE USED	A.REX	17OCT23		
C	LOADING THRU PLANT WOK	A.REX	29NOV23		
D	BATCH OFFICE MOVED	A.REX	04DEC23		
E	DA AMENDMENT	M.TALIB	21AUG25		



STATUS
NOT FOR CONSTRUCTION

ALL DIMENSIONS IN mm UNO

This drawing remains, at all times, the property of Pentral Fultum Pty Ltd (ABN 95 625 148 030) and is subject to recall immediately upon request. It must not be loaned, copied or communicated in any form or by any means without permission of Pentral Fultum Pty Ltd.

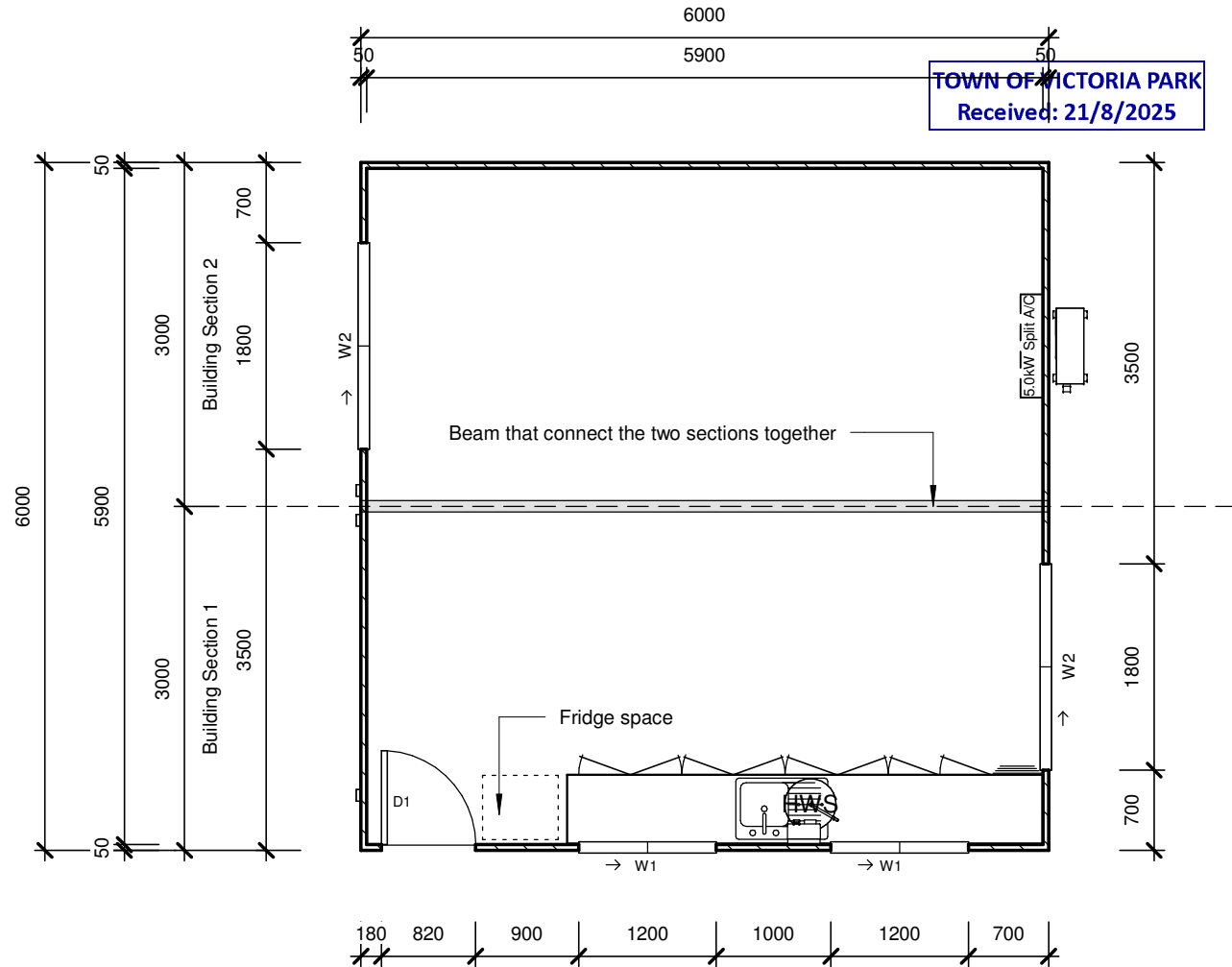
HOLCIM **WELSHPOOL** CONCRETE PLANT
BATCH OFFICE
BATCH OFFICE

SIZE	FILENAME	DWG NO	REV
A3	PF22-16-DG-001_D Batch Office + Additive Store.vsdx	PF22-16-DG-001	E
SCALE	1:50	DO NOT SCALE	SHEET
			3 OF 3

SITE OFFICE **6.0m x 6.0m**

Notes:

- D1: EPS External single panel door - 820W x 2040H.
- W1: Sliding window - 1200H x 1200W.
- W2: Sliding window - 1200H x 1800W.
- External walls are 50mm thick.
- Floor is 19mm Yellow Tongue.
- Roof panels are 50mm thick.
- Building will have 150mm steel skids.
- Colour of the walls, doors, roof & windows will be Surfmist.
- Please refer to Construction Quotation for Building Specifications.
- If an item is not listed on the Construction Quotation it will not be provided.



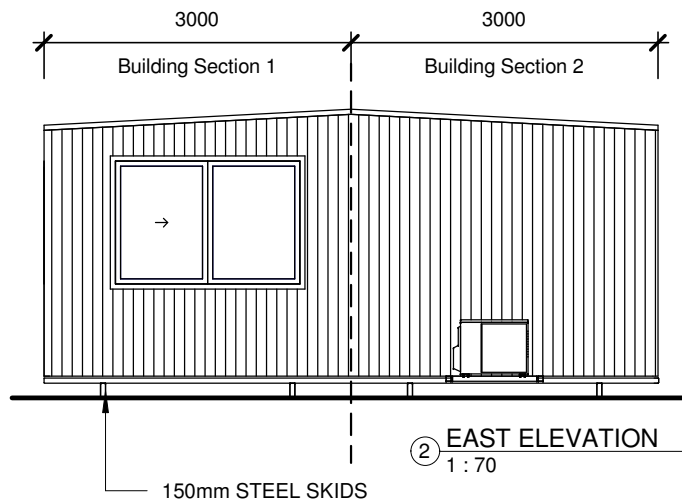
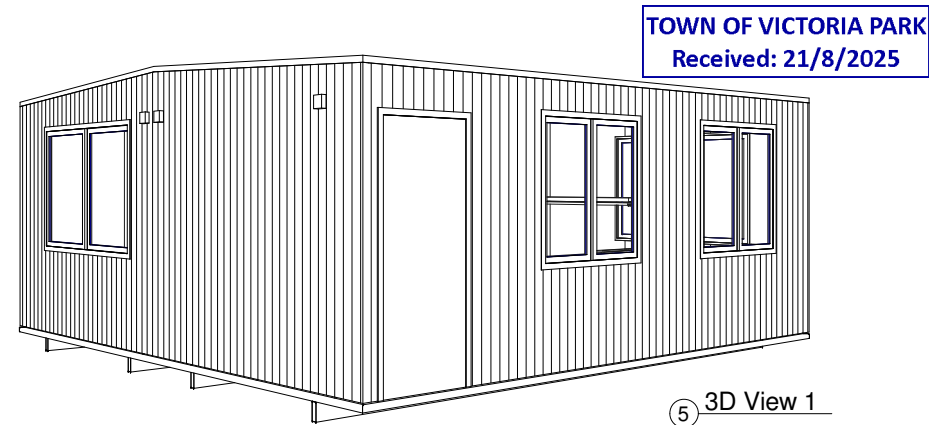
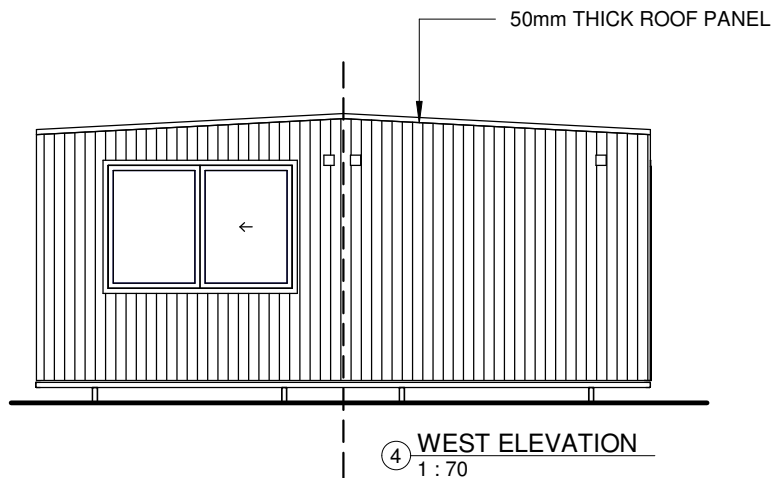
TOWN OF VICTORIA PARK
Received: 21/8/2025

① **FLOOR PLAN**
1 : 60



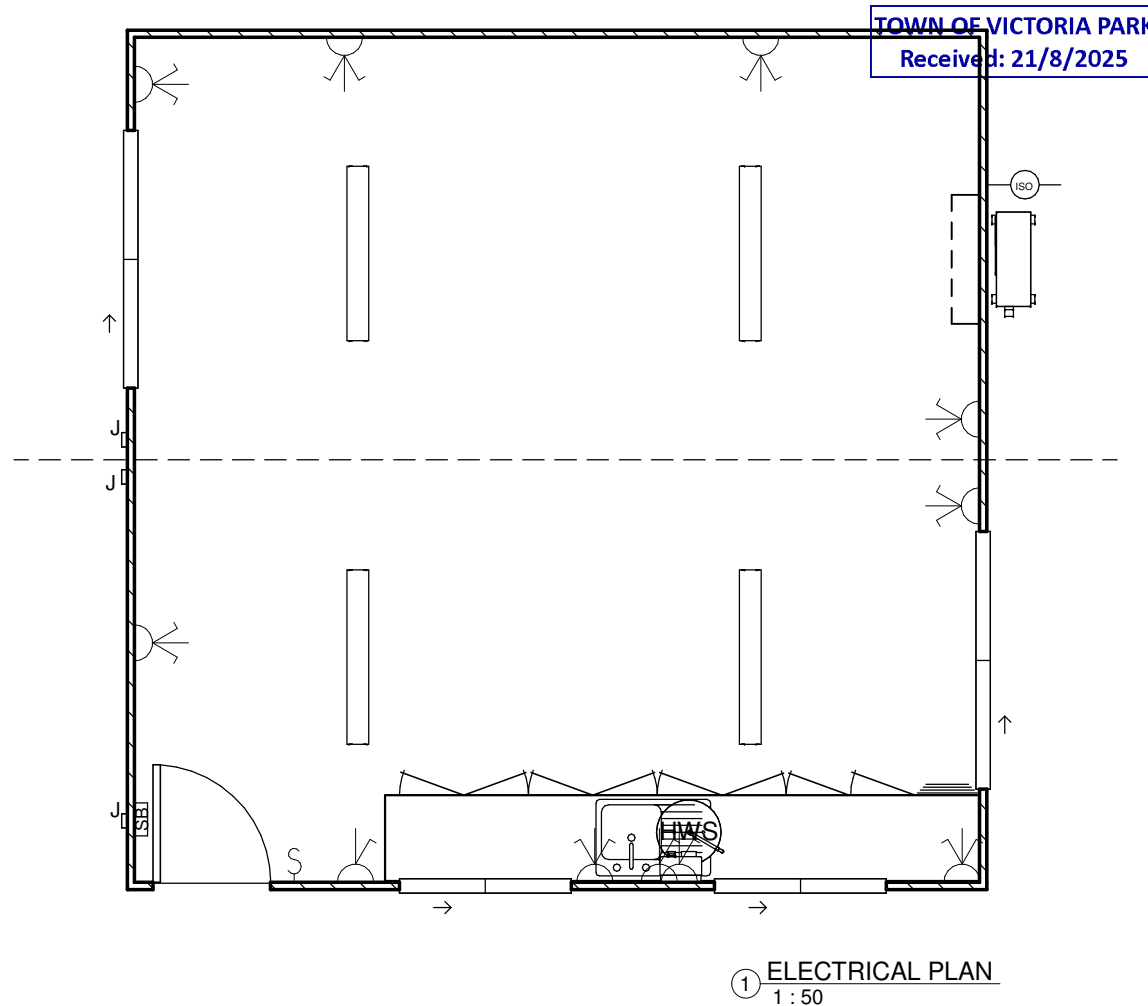
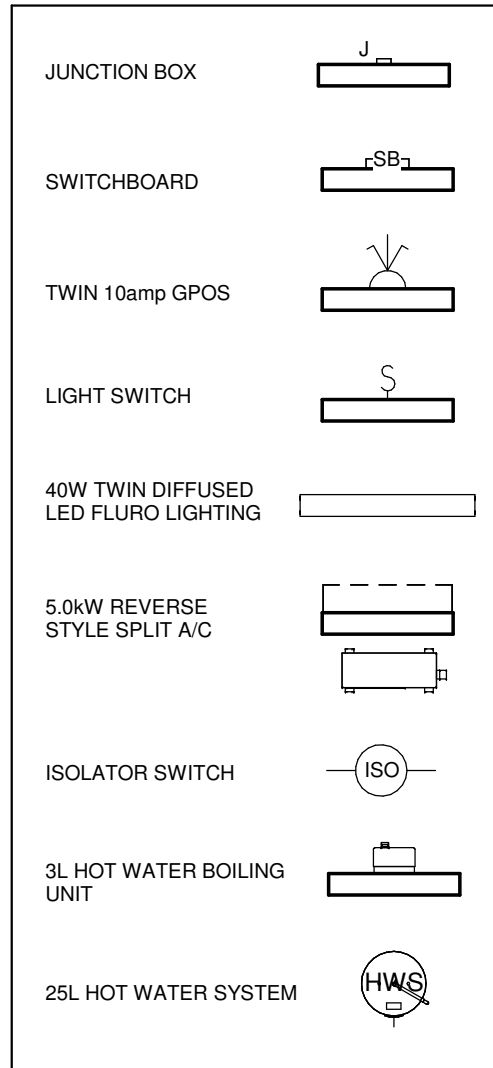
All designs and artwork are owned by GB McGregor Portable Buildings and may not be copied or used in any form, project or venture without the permission or license. This includes all sample designs as well as objects, structural and architectural. Conceptual designs submitted as proposals always remain the intellectual property of GB McGregor Portable Buildings and are subject to this copyright statement

Rev1	DRAWN BY:	DATE:	CLIENT:	PRELIMINARY DESIGN	X
Rev2	Dila Salis	25/06/2019	Lafarge Holcim	WORKSHOP DESIGN	
Rev3	CHECKED BY:	DATE:	BUILDING SIZE: 6.0m x 6.0m	AS BUILT PLANS	
Rev4	CUSTOMER APPROVAL:	DATE:	BUILDING NO:	PAGE NO:	01 of 04
Rev5				A01	
Rev6					



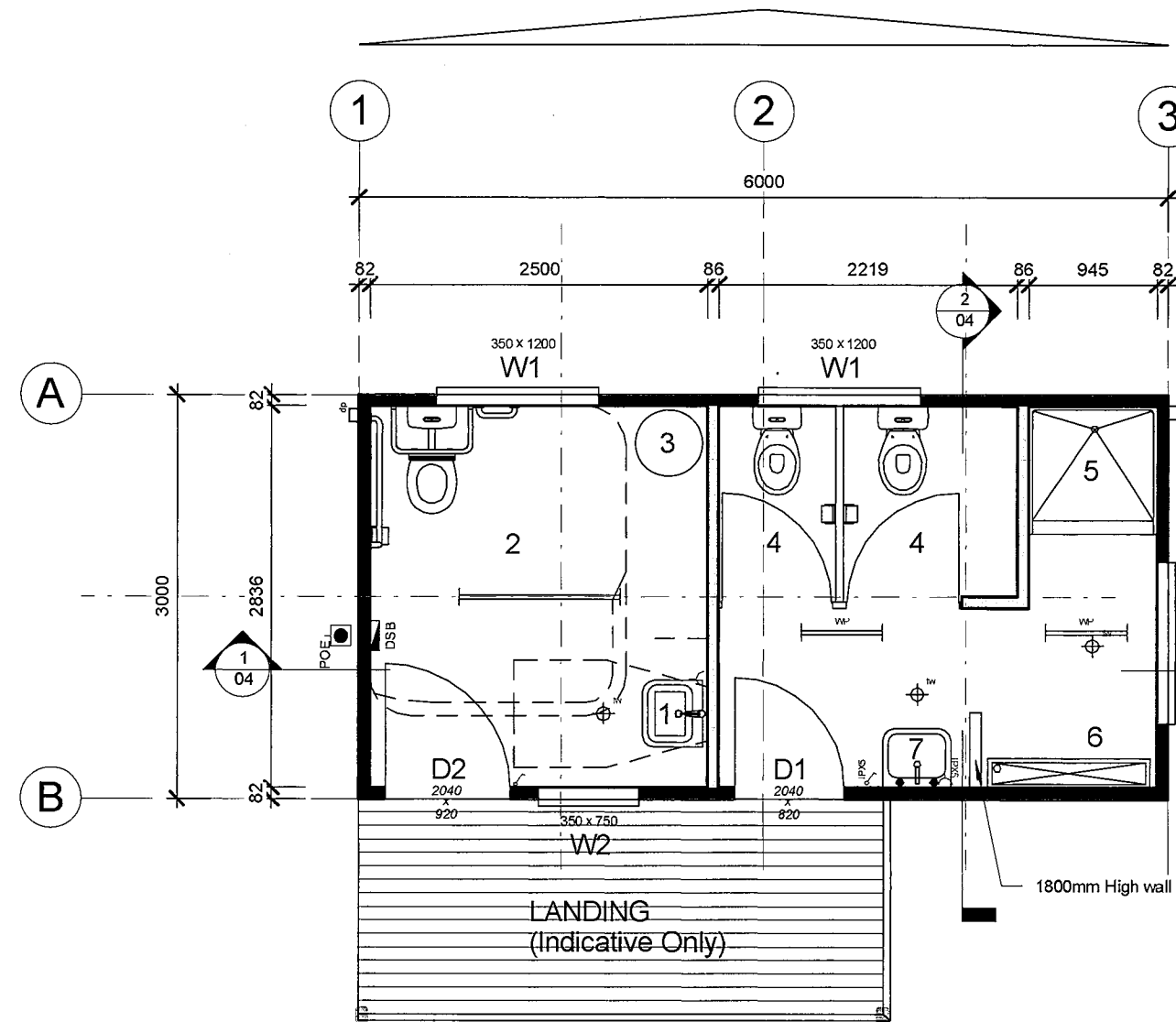
All designs and artwork are owned by GB McGregor Portable Buildings and may not be copied or used in any form, project or venture without the permission or license. This includes all sample designs as well as objects, structural and architectural. Conceptual designs submitted as proposals always remain the intellectual property of GB McGregor Portable Buildings and are subject to this copyright statement

Rev1	DRAWN BY:	DATE:	CLIENT:	PRELIMINARY DESIGN	X
Rev2	Dila Salis	25/06/2019	Lafarge Holcim	WORKSHOP DESIGN	
Rev3	CHECKED BY:	DATE:	BUILDING SIZE: 6.0m x 6.0m	AS BUILT PLANS	
Rev4	CUSTOMER APPROVAL:	DATE:	BUILDING NO:	PAGE NO:	02 of 04
Rev5				A02	
Rev6					



All designs and artwork are owned by GB McGregor Portable Buildings and may not be copied or used in any form, project or venture without the permission or license. This includes all sample designs as well as objects, structural and architectural. Conceptual designs submitted as proposals always remain the intellectual property of GB McGregor Portable Buildings and are subject to this copyright statement

Rev1	DRAWN BY:	DATE:	CLIENT:	PRELIMINARY DESIGN	
Rev2	Dila Salis	25/06/2019	Lafarge Holcim	WORKSHOP DESIGN	
Rev3	CHECKED BY:	DATE:	BUILDING SIZE:	AS BUILT PLANS	
Rev4			6.0m x 6.0m		
Rev5	CUSTOMER APPROVAL:	DATE:	BUILDING NO:	PAGE NO:	03 of 04
Rev6				A03	



Item List

- D1 2040 x 820 External Door - Standard : Hollow Core MC
D2 2040 x 920 External Door - Standard : Hollow Core MC
- W1 350 x 1200 Sliding Glass Window - Obscure Glass
W2 350 x 750 Sliding Glass Window - Obscure Glass
- 1 Disabled hand basin c/w oversized mirror over
2 Disabled WC Suite, Grab Rails & Backrest
3 80Ltr Hot Water System - Internal c/w Safe Tray
4 WC Cubicle c/w toilet roll holder
5 945 x 945 Fibreglass shower cubicle
6 1200mm Wall mounted S/S urinal
7 S/S Handbasin c/w mirror over
fw Floor Waste

TOWN OF VICTORIA PARK
Received: 21/8/2025

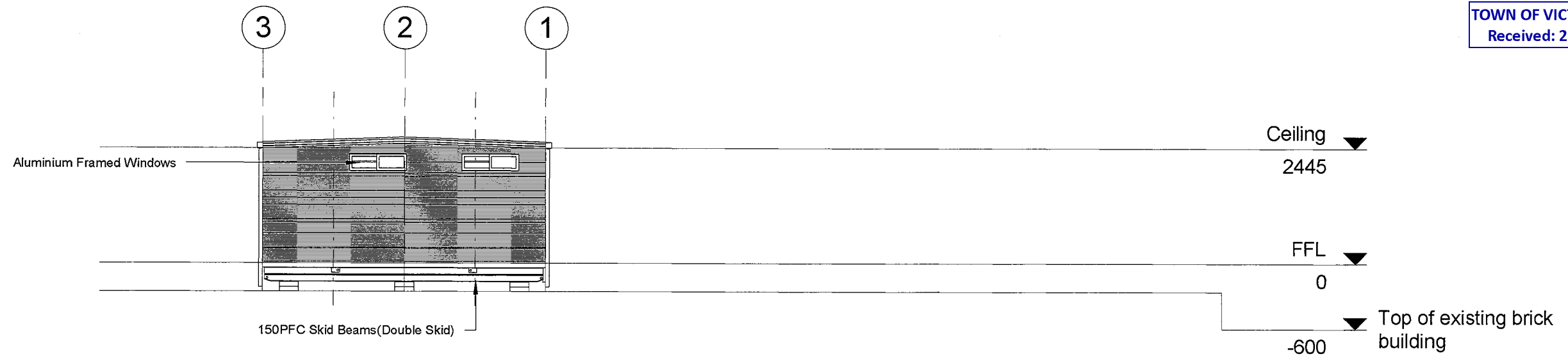
Electrical Legend

- DSB Distribution Switchboard
POE - Point Of Entry
Light switch
Two-way light switch
Light switch - IPX5 rated
Isolation Switch
- 10amp Single GPO
10amp Double GPO
15amp Single GPO.
10amp GPO - IPX5 rated
20amp Single GPO
- Indicates floor mounting
- Indicates ceiling mounting
- Comms. - Draw wire only
'F' Type television outlet
240V Smoke detector
36w Single fluorescent light
36w Double fluorescent light
36w Emergency back-up fluorescent light
36w Single fluorescent light - IP65 rated
Emergency exit light
- Batten holder
External light
18W Single Vandalite
Oyster light
Photo electric light switch
Spot light

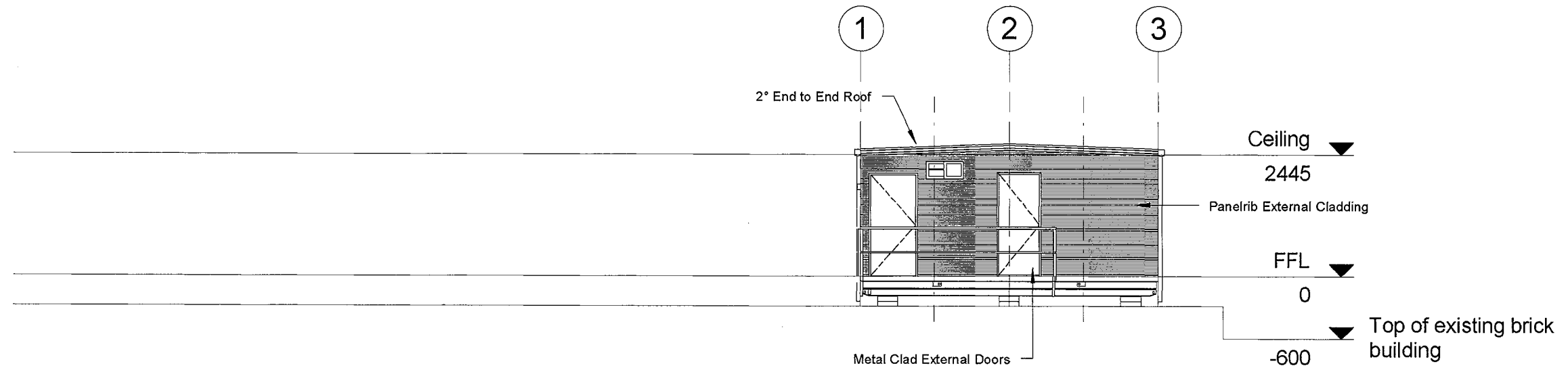
Floor Plan

1 : 50

Rev No.	Description	Date	By	PROJECT No.	DATE	19.7.19	TITLE	DESIGN WIND LOAD
A		19/7/19		6.0 x 3.0m Male Ablution/Unisex Toilet	SCALE	1 : 50	Floor Plan	N3
				Holcim Australia	DRAWN		DRAWING NUMBER	REVISION SHEET SIZE
					CHECKED			A A3

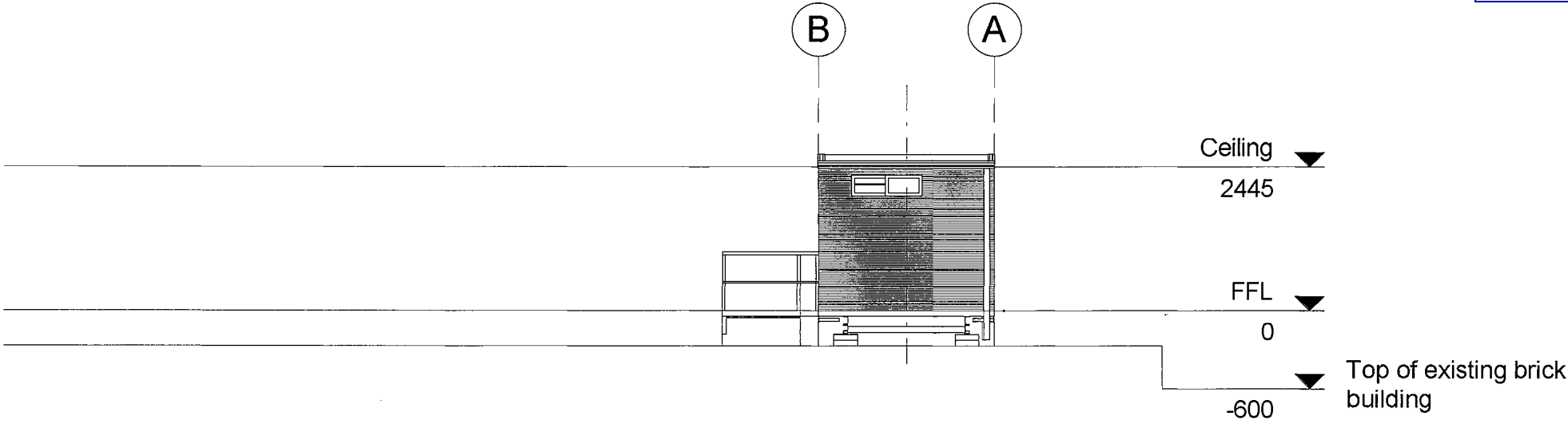


1 Elevation A
1 : 100

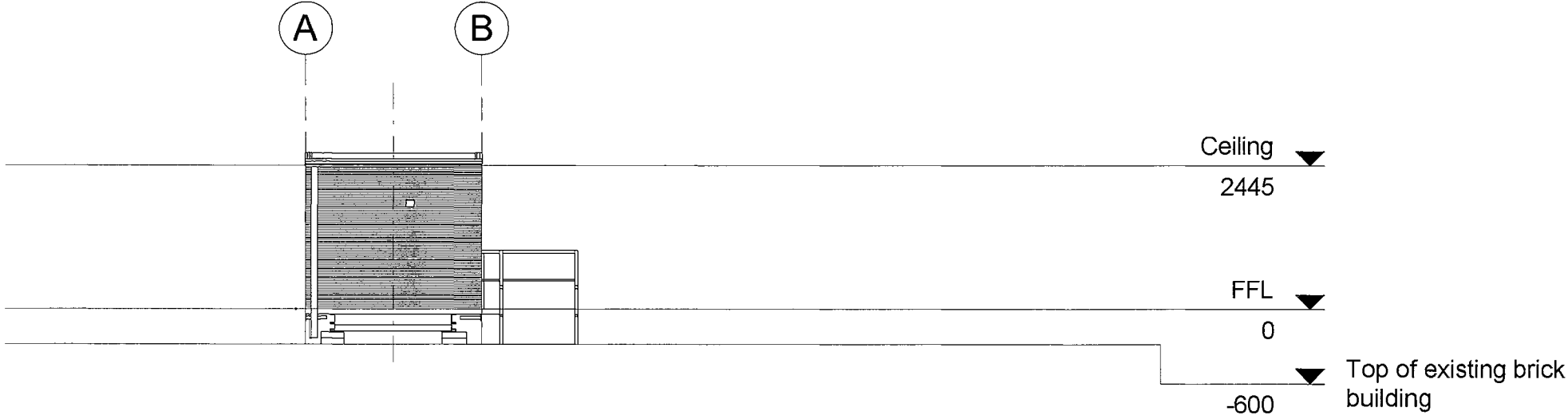


2 Elevation B
1 : 100

Rev No.	Description	Date	By	PROJECT No.	DATE	19.7.19	TITLE	DESIGN WIND LOAD
A		19/7/19		6.0 x 3.0m Male Ablution/Unisex Toilet Holcim Australia	SCALE	1 : 100	Elevations A & B	N3
					DRAWN		DRAWING NUMBER	REVISION
					CHECKED			A
								SHEET SIZE
								A3



1 Elevation C
1 : 100



2 Elevation D
1 : 100

Rev No.	Description	Date	By	PROJECT No.		DATE	19.7.19	TITLE		DESIGN WIND LOAD	
A		19/7/19		6.0 x 3.0m Male Ablution/Unisex Toilet		SCALE	1 : 100	Elevations C & D		N3	
				Holcim Australia		DRAWN		DRAWING NUMBER		REVISION	SHEET SIZE
						CHECKED				A	A3