



Peppercorn Leases

Social Impact Summary

.....



TOWN OF
VICTORIA PARK

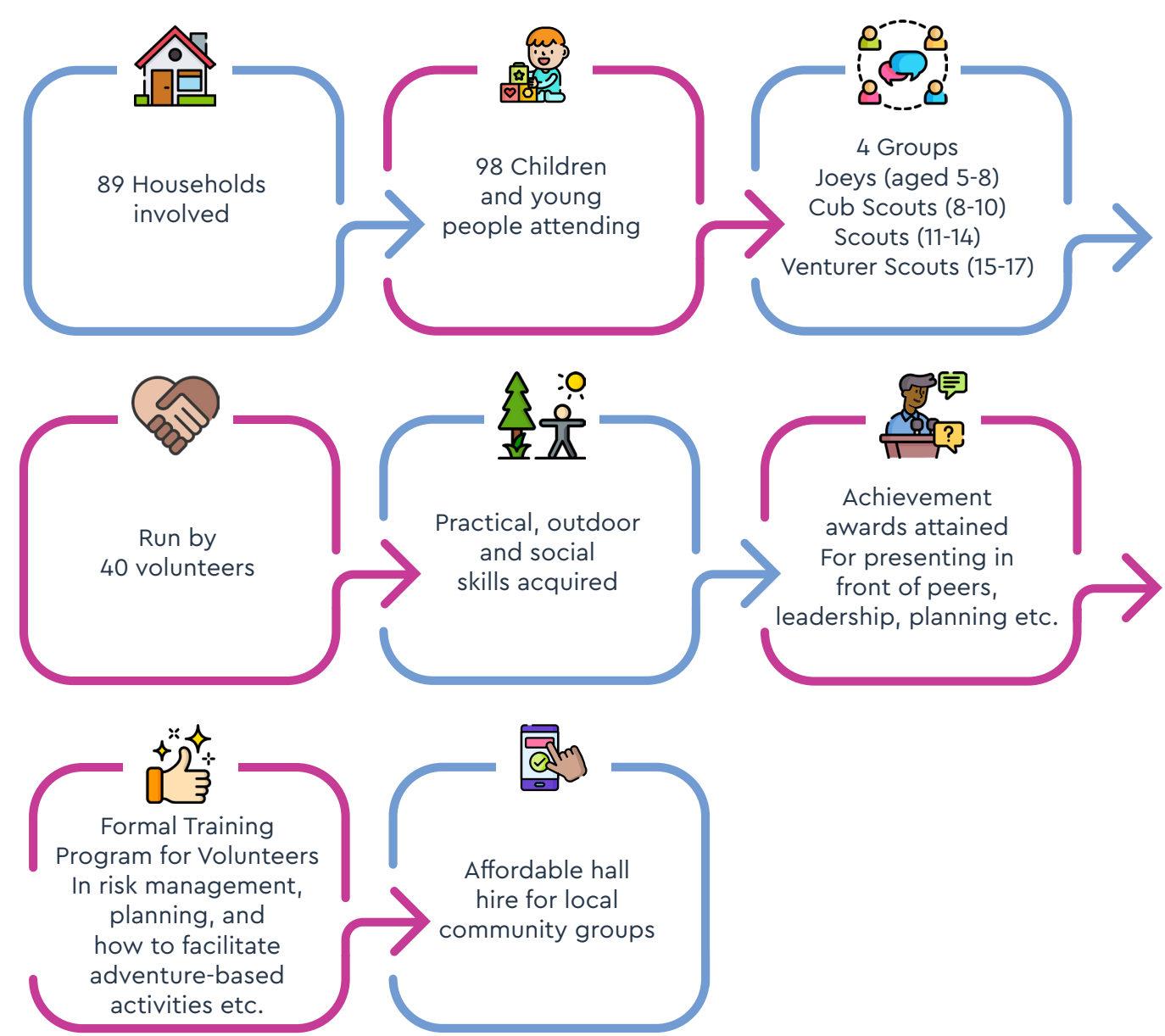
Carlisle Scouts – Program Logic Model

Key inputs	<p>Volunteers:</p> <ul style="list-style-type: none">Contribution of time and effort from around volunteers, helpers and occasional helpers. <p>Support from Scouts WA:</p> <ul style="list-style-type: none">Program Guidance, Volunteer Support, Governance <p>Support from Town of Victoria Park</p> <ul style="list-style-type: none">Peppercorn Lease of Scout Hall
Participants	<p>Families:</p> <ul style="list-style-type: none">ChildrenYouthParents <p>Volunteers:</p> <ul style="list-style-type: none">Helpers & Occasional HelpersMany volunteers are parents and also youth who have been through the program. <p>Community groups:</p> <ul style="list-style-type: none">Community groups who hire the Scout hall for social, educational and fitness activities.
Activities	<p>Scout Group Sessions</p> <ul style="list-style-type: none">Sessions at the Scout Hall for Joeys (5–8). Cub Scouts (8–10), Scouts (11–14), Venturer Scouts (15–17). Children and youth learn life and social skills. <p>Outdoor Adventures</p> <ul style="list-style-type: none">Hiking, camping and learning outdoor skills. <p>Volunteering Opportunity</p> <ul style="list-style-type: none">Like all scouting groups, Carlisle Scouts is run by volunteers who develop skills through volunteering.
Deliverables	<p>Measurable Award Scheme</p> <ul style="list-style-type: none">Young people gain recognition for achievements like presenting in front of peers, leadership and planning. <p>Formal Training Program</p> <ul style="list-style-type: none">Leaders learn skills like risk management, contingency planning, and how to facilitate adventure-based activities. <p>Hall Hire</p> <ul style="list-style-type: none">For community groups

Short-term measurable improvements	<p>Increase in:</p> <ul style="list-style-type: none">Life skillsSocial skillsOutdoor skillsLeadership skills <p>How these will be measured:</p> <ul style="list-style-type: none">Anecdotal observationPossible occasional surveys from Scouts WA.
Medium term outcomes	<p>Gains:</p> <ul style="list-style-type: none">Improved independence and capabilities of children and youth.Improved capabilities of volunteer participants. <p>How these will be measured:</p> <ul style="list-style-type: none">Anecdotal observationPossible occasional surveys from Scouts WA.
Strategic outcomes	<ul style="list-style-type: none">S4. Improving access to arts, history, culture and educationS3. Facilitating an inclusive community that celebrates diversity.S1. Helping people feel safe.



Carlisle Scouts – 2023 Overview



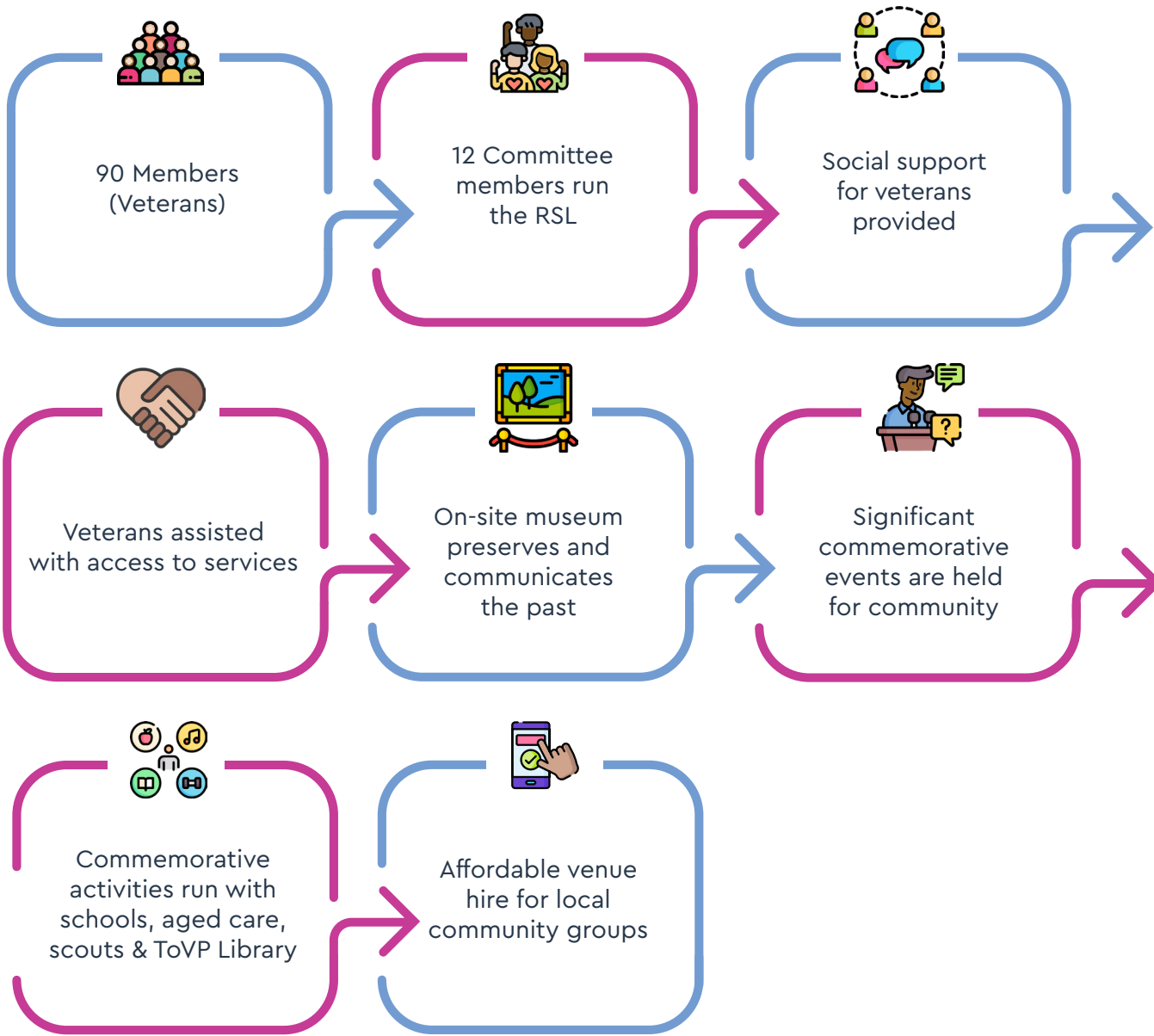
Victoria Park RSL – Program Logic Model

Key inputs	<p>Volunteers:</p> <ul style="list-style-type: none">Contribution of time and effort by committee members. <p>Support from RSL WA Branch:</p> <ul style="list-style-type: none">Governance support. <p>Support from Town of Victoria Park</p> <ul style="list-style-type: none">Peppercorn Lease of RSL Hall.Occasional collaboration with Library and Events Team.
Participants	<p>Veterans:</p> <ul style="list-style-type: none">In 2023 there were about 90 RSL members and 12 committee members. <p>Local community:</p> <ul style="list-style-type: none">Those who attend events, the museum, and who get involved in collaborations. <p>Includes:</p> <ul style="list-style-type: none">SchoolsAged CareScouting GroupsLocal community <p>Local organisations:</p> <ul style="list-style-type: none">Those who book the RSL hall for their own community and education events.
Activities	<p>Social support for veterans:</p> <ul style="list-style-type: none">Camaraderie and a one-stop shop for veterans: access to services; socialisation, advice and advocacy. <p>Events:</p> <ul style="list-style-type: none">Provision of significant community events; Anzac Day, Remembrance Day that attract the Victoria Park Community in remembering the past. <p>Museum:</p> <ul style="list-style-type: none">Preserving and communicating the history of Australia's involvement in conflicts.
Deliverables	<p>Venue hire:</p> <ul style="list-style-type: none">Provision of a central location for residents and local organisations to host a variety of community events. <p>Community collaboration:</p> <ul style="list-style-type: none">Collaborating with Schools, Aged Care and Scouting Groups on commemorative activities.

Short-term measurable improvements	<p>Increase in:</p> <ul style="list-style-type: none"> • Social connection • Community knowledge of historic events and legacy of veterans. <p>How these will be measured:</p> <ul style="list-style-type: none"> • Anecdotal observation • Possible occasional surveys from RSL WA.
Medium term outcomes	<p>Gains:</p> <ul style="list-style-type: none"> • Sustained mental health and sense of belonging for veterans. • Sustained sense of community identity and connection to the past. <p>How these will be measured:</p> <ul style="list-style-type: none"> • Anecdotal observation • Possible occasional surveys from RSL WA.
Strategic outcomes	<ul style="list-style-type: none"> • S4. Improving access to arts, history, culture and education. • S3. Facilitating an inclusive community that celebrates diversity. • S1. Helping people feel safe.



Victoria Park RSL - 2023 Overview



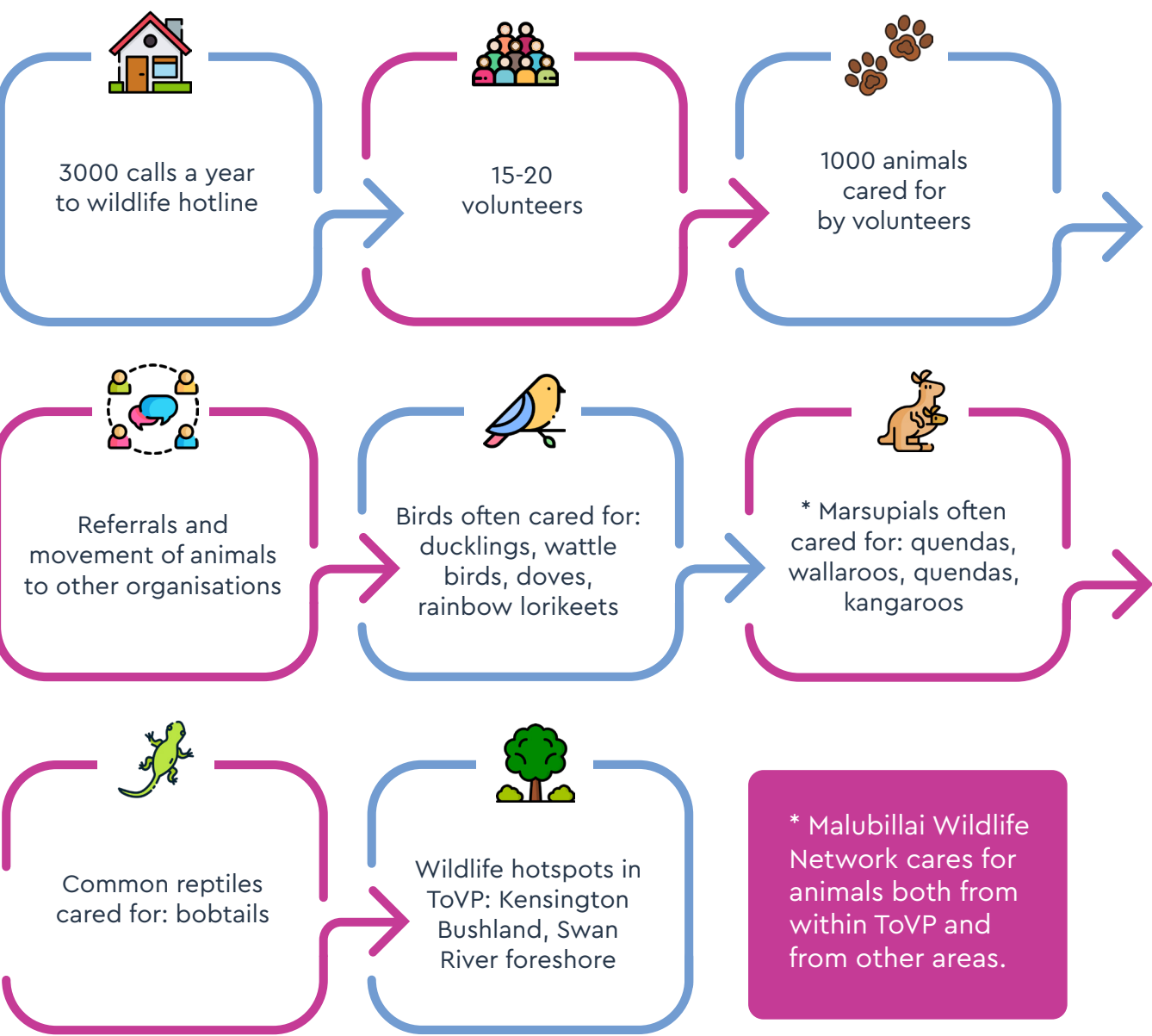
Malubillai Wildlife Network – Program Logic Model

Key inputs	<p>Volunteers:</p> <ul style="list-style-type: none"> Contribution of time and expertise by Chair who provides wildlife hotline and coordinates all activities of Malubillai. Contribution of time, effort by volunteer carers, caring for animals in their homes. Contribution of \$, by volunteers to purchase supplies to care for animals <p>Support from Town of Victoria Park</p> <ul style="list-style-type: none"> Peppercorn Lease of Meeting / Storage room.
Participants	<p>Animals:</p> <ul style="list-style-type: none"> Wildlife from the local area as well as from further afar. <p>Volunteers:</p> <ul style="list-style-type: none"> Community members who care for and rehabilitate animals in their homes. <p>Local community:</p> <ul style="list-style-type: none"> Those who call the hotline, receive advice and who are guided to provide simple assistance to animals. <p>Other wildlife care organisations:</p> <ul style="list-style-type: none"> Organisations that Malubillai refers and moves some animals to.
Activities & Deliverables	<p>Wildlife hotline:</p> <ul style="list-style-type: none"> Providing advice over the phone to the community about wildlife rescue, care and rehabilitation, and a triage/intake/referral service where required. <p>Animal care and rehabilitation:</p> <ul style="list-style-type: none"> Volunteer carers rehabilitate unwell or injured wildlife in their homes. <p>Referral network:</p> <ul style="list-style-type: none"> Referrals and movement of animals to vets and other wildlife care organisations such as Darling Range Wildlife Centre, Kanyana Wildlife and Bluebush Wildlife Rescue & Rehabilitation.
Short-term measurable improvements	<p>Increase in:</p> <ul style="list-style-type: none"> Animals rescued and rehabilitated Community knowledge of wildlife rescue and care. <p>How these will be measured:</p> <ul style="list-style-type: none"> Anecdotal observation Possible occasional surveys.

Medium term outcomes	<p>Gains:</p> <ul style="list-style-type: none"> Sustained natural environment. Improved community awareness and participation in caring for the natural environment. <p>How these will be measured:</p> <ul style="list-style-type: none"> Anecdotal observation Possible occasional surveys.
Strategic outcomes	<ul style="list-style-type: none"> EN1. Protecting and enhancing the natural environment. S4 Improving access to arts, history, culture and education.



Malubillai Wildlife Network – 2023 Overview



Vic Park Community Garden – Program Logic Model

Key inputs	Volunteers: <ul style="list-style-type: none"> Contribution of time and effort by volunteer committee members and community garden members. Support from Town of Victoria Park <ul style="list-style-type: none"> Peppercorn Lease of community garden.
Participants	Members: <ul style="list-style-type: none"> Individual members who lease plots and committee members who run the garden. Local community: <ul style="list-style-type: none"> Those who attend events, programs and workshops. Neighbouring organisations benefitting from proximity to garden. Local organisation: <ul style="list-style-type: none"> Those who get involved with the community garden through corporation social responsibility.
Activities	Read Park Community Garden: <ul style="list-style-type: none"> Garden plots available for lease to individual members. Communal plots for all members to work on. Satellite Garden @ 98 Rutland Ave: <ul style="list-style-type: none"> Drainage sump revegetation project. Monthly busy bees: <ul style="list-style-type: none"> Regular member gatherings for maintenance/land care. Facilitating Corporate Social Responsibility <ul style="list-style-type: none"> Corporate groups undertake gardening activities.
Deliverables	Community events: <ul style="list-style-type: none"> Open Days etc. Workshops <ul style="list-style-type: none"> Education for the community about topics such as composting Grubs & Bubs Playgroup <ul style="list-style-type: none"> Families meet and connect through facilitated nature play. Partnership with Adopt a Nana Program <ul style="list-style-type: none"> Opportunity for older community member to connect with families.

Short-term measurable improvements	<p>Increase in:</p> <ul style="list-style-type: none"> • Social connection • Community knowledge and skills in gardening and sustainable practices. <p>How these will be measured:</p> <ul style="list-style-type: none"> • Anecdotal observation • Possible surveys by Vic Park Community Garden.
Medium term outcomes	<p>Gains:</p> <ul style="list-style-type: none"> • Improved mental health and sense of belonging for members. • Improved community resilience. • Increase in greenery. <p>How these will be measured:</p> <ul style="list-style-type: none"> • Anecdotal observation • Possible surveys by Vic Park Community Garden.
Strategic outcomes	<ul style="list-style-type: none"> • EN1. Protecting and enhancing the natural environment. • S4 Improving access to arts, history, culture and education. • S3. Facilitating an inclusive community that celebrates diversity. • S1. Helping people feel safe.



Vic Park Community Garden – 2023 Overview

