



Peppercorn Leases

Social Impact Summary



TOWN OF
VICTORIA PARK

Carlisle Victoria Park Toy Library – Program Logic Model

Key Inputs	Participants	Activities / Deliverables		Short-term outcomes	Medium term outcomes	Strategic Alignment
<p>Volunteers 350+ volunteer hours</p> <p>Resources 1,433 Toys, games, educational items</p> <p>Income Grant funding Membership fees (Standard \$72 p.a.)</p> <p>Support from Town of Victoria Park Peppercorn Lease</p>	<p>Families – 171 family memberships including CaLD families and families with a child with disability 215 children</p>	<p>Collect, catalogue, manage and loan quality toys, games and educational items.</p>	<p>Promote the service through community events</p>	<p>Increased: Opportunities to connect with the community</p>	<p>Improved: Early Childhood Development</p>	
	<p>Volunteers – 141 volunteers <i>The Toy Library is entirely volunteer-run.</i> Managing committee Operational duties Volunteer roles include •assisting at borrowing sessions •repairing toys •marketing and website design •fundraising and events •administration and purchasing •mentoring and policy development</p>	<p>Provide training for volunteers</p> <p>Provide opportunities for caregivers of young children to gain work experience and build community engagement.</p>	<p>Fundraising</p> <p>Stay and Play sessions</p> <p>4 key partnerships: Toy Libraries Australia</p>	<p>Opportunities to gain work experience</p> <p>Awareness of stages in early childhood development</p>	<p>Sense of belonging to the community</p> <p>Employability</p>	<p>S4. Improving access to arts, history, culture and education.</p>
	<p>Work placement</p> <p>Students 2 x year 10-12 students (with a support worker) gain weekly work experience</p>	<p>Provide work experience opportunities for students and people with disability</p> <p>Provide information about stages of early child development to caregivers of children aged 0-6</p>	<p>Cannington College Education Support Centre</p> <p>Southbank Montessori School</p>	<p>Access to resources that promote positive Early Childhood Development</p> <p>Decreased: Waste</p> <p>Measured through:</p> <ul style="list-style-type: none"> • Observation • Feedback • Annual surveys 	<p>Environmental footprint</p> <p>Measured through:</p> <ul style="list-style-type: none"> • Observation • Feedback • Annual surveys 	<p>S3. Facilitating an inclusive community that celebrates diversity.</p> <p>EN2. Facilitating the reduction of waste.</p>

Carlisle Victoria Park Toy Library – 2024/25 Storyboard

171

family memberships



Weekly work experience opportunities for **high school students**

Quiet hour for **neurodivergent children**

Managed and operated by a volunteer committee with

141

volunteers donating

hundreds

of volunteer hours

Toy collection promotes positive **early childhood development**



1,433

items for loan, facilitating a reduction in waste



Community engagement opportunities for **migrant families and people living with disability**

Opportunities to connect with other **local families**

Carlisle Vic Park Toy Library – 2024/25 Impact stories

"The experience the students get in the Toy Library is so invaluable. They have different levels of ability and without exception they have worked to their strengths... **their confidence has improved** by being in a workplace that has such a variety of tasks. [It] gives them **a sense of pride** and ownership, reinforcing their ability to succeed at other workplaces."
-Student Coordinator

"The Toy Library provides a nurturing environment where **students with special needs feel safe and supported.** Surrounded by understanding individuals, our students have had the chance to **learn new skills** with confidence and support. We have encountered many wonderful members who offer encouragement and patience and make our students feel comfortable. It is always a pleasure attending CVPTL!"
-Student support worker.

Member Feedback

The toy library has helped my family meet other local families. The range of toys and availability has been a fantastic way rotate toys & keep our little one entertained without burning through \$\$\$

Great library and fantastic committee members

- great selection of age appropriate toys - friendly volunteers

Sarah the president is always keen to improve the library

The local toy library has made me feel apart of a family. Fantastic choice of toys and my kids love visiting and exploring the new toys.

Vic Park Community Garden – Program Logic Model

Key Inputs	Participants	Activities / Deliverables		Short-term outcomes	Medium term outcomes	Strategic Outcomes
<p>5,730 Volunteer hours</p> <ul style="list-style-type: none"> • Contribution of time and effort by volunteer committee members and community garden members. <p>Support from Town of Victoria Park</p> <ul style="list-style-type: none"> • Peppercorn Lease of community garden. 	<p>44 Members</p> <ul style="list-style-type: none"> • Individual members who lease plots and committee members who run the garden. <p>30 Private allotments</p>	<p>Read Park Community Garden</p> <ul style="list-style-type: none"> • Garden plots available for lease to individual members. • Communal plots for all members to work together. 	<p>Community Events</p> <ul style="list-style-type: none"> • Open Day • Spring and Autumn equinox socials • End of year gatherings 	<p>Increase in:</p> <ul style="list-style-type: none"> • Social connection • Community knowledge and skills in gardening and sustainable practices. <p>Measured through:</p> <ul style="list-style-type: none"> • Anecdotal observation • Social Impact Register 	<p>Gains:</p> <ul style="list-style-type: none"> • Improved mental health and sense of belonging for members. • Improved community resilience. • Increased plant life. <p>Measured through:</p> <ul style="list-style-type: none"> • Anecdotal observation • Social Impact Register 	<p>EN1. Protecting and enhancing the natural environment.</p> <p>S4 Improving access to arts, history, culture and education.</p> <p>S3. Facilitating an inclusive community that celebrates diversity.</p> <p>S1. Helping people feel safe.</p>
<p>1,519 Visitors</p> <ul style="list-style-type: none"> • Event, programs and workshop participants. • Open Day attendees 	<p>Satellite Garden @ 98 Rutland Ave</p> <ul style="list-style-type: none"> • Drainage sump revegetation project. 	<p>Workshops</p> <ul style="list-style-type: none"> • Community education • Regular home composting workshops 	<p>Grubs & Bugs Playgroup</p> <ul style="list-style-type: none"> • Families meet and connect through facilitated nature play. • Weekly sessions during term time • Intergenerational program. 			
<p>960 Grubs & Bugs attendances</p> <p>5,730+ Volunteer hours</p> <p>Local organisations</p> <ul style="list-style-type: none"> • 7+ Partnerships <p>2,245 Social Media followers</p>	<p>Monthly Busy Bees</p> <ul style="list-style-type: none"> • Regular member gatherings for maintenance/land care. <p>Education</p> <ul style="list-style-type: none"> • Hosted visits from schools, tertiary institutions and gardening groups. 					

Vic Park Community Garden – 2024/25 Storyboard



44
Members

30
garden allotments

5,730
Volunteer hours



1,519
public visits

Monthly
Busy Bees
with social
cuppa



960
attendees at weekly*
“Grubs & Bubs”
intergenerational
nature playgroup
sessions
*during school term

2,245
Facebook
Followers



66
attendees at
Workshops on
Home Composting
or
Pickle and Fizz

210
attendees at
Community
events



120+
attendees at
Open Day

Vic Park Community Garden – 2024/25 Impact stories

"My knowledge of native plants, herbs gardens, and vegetable patches increased exponentially through Natalie's **patient and gentle teaching**. My son will now confidently pluck a ripe lillypilly off a nearby bush, declaring it to be edible before popping it into his mouth. He knows that limes should be picked when they are yellowing. **He rejoices in feeding the worms and gently holding one in his hand**. We returned from many a playgroup with a basket full of treasures like sunflowers, or freshly dug radishes and sweet potato."

-Grubs & Bugs parent

89% visitors recorded **community awareness** and / or **social interaction** as an outcome of participation.

Allotments enable local community members to enjoy growing food and ornamental plants and **be part of a supportive community**.

Monthly busy bees build engagement among members.

Urban greening project supports revegetation of a Council drainage sump to create a **natural habitat for flora and fauna**.

Community events activate the space and **raise awareness** among the wider community.

Workshops inform and educate, empowering the community to become more **sustainable and resilient and promoting climate change action** at grassroots citizen level.

"I moved to Victoria Park after buying my first house. I was a single mum with a 2-year-old son and I literally knew nobody in the neighbourhood.

I searched for activities that we could join which were cost effective and would **help us find our sense of place in this community**.

Grubs'n'Bugs felt like a natural fit, a relaxed and welcoming playgroup with space for a little boy to learn, explore and move.

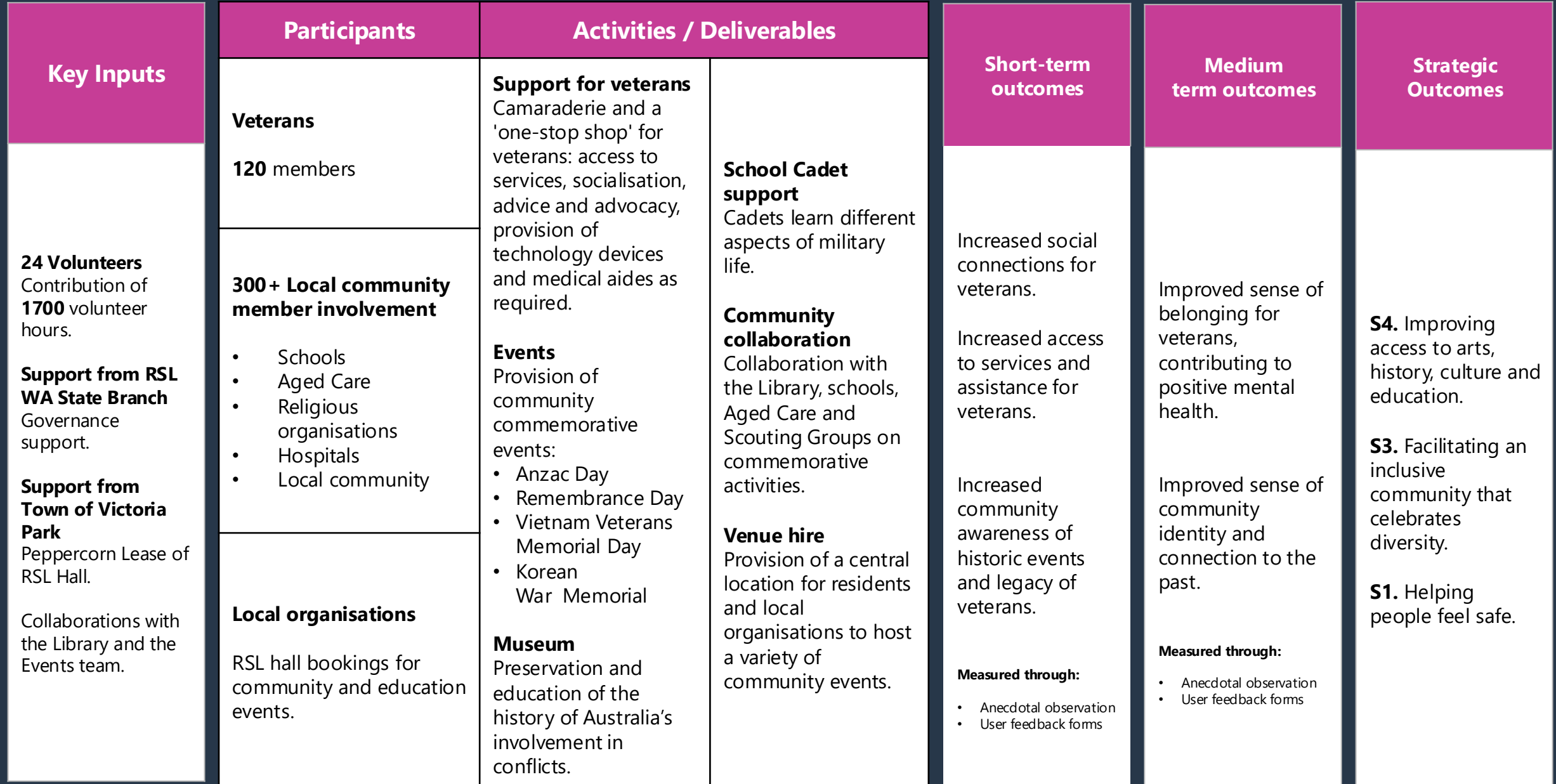
Over the next two years we became regular visitors to the playgroup...

We have made a multitude of connections through the families at the garden, now often bumping into them at school, at the farmer's market, the pool or on neighbourhood bike rides.

For me, **this playgroup made me feel less alone in my parenting journey**, introducing me to a network of support and has given me memories with my son that will be **cherished**."

-Grubs & Bugs parent

Victoria Park RSL – Program Logic Model



Victoria Park RSL – 2024/25 Storyboard



120
Members
(Veterans)

24
Volunteers

Social support
for veterans.

1700
volunteer hours

Veterans assisted
to access **services**.



6 Significant
commemorative
community **events**
organised.



Commemorative activities
held in collaboration with
schools, libraries, aged care,
and commercial entities.



On-site museum preserves
and communicates Australia's
defence history.

Affordable **venue hire**
available for local
community groups.



Victoria Park RSL – 2024/25 Impact stories

Veterans, some of whom have felt alone and unrecognised for a long time, have the opportunity to come together.

Connections are forged which can **rekindle the bonds of service and mateship.**

Our subbranch was selected as one of only 2 locations for a visual presentation using images, photographs and illustrations representing and explaining the **Australian / Korean collaboration during the Korean War.**

As the number of veterans dwindles it becomes increasingly important to ensure that future generations know about **the role Australian veterans have played** in conflicts and peace keeping operations.

We are focusing on **engaging younger veterans and families** by offering relevant activities such as fitness and social gatherings as additions to the traditional RSL services.

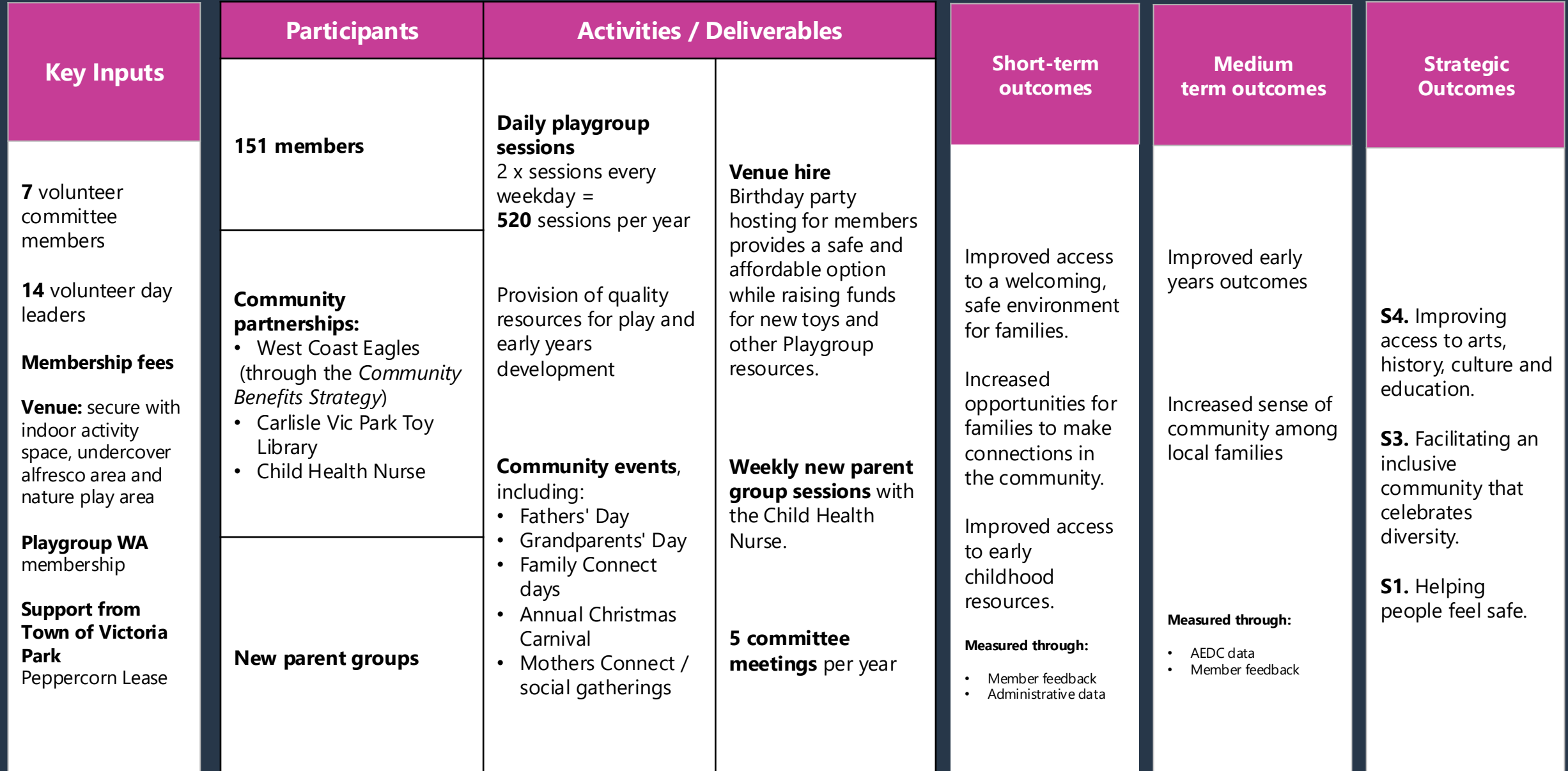
The subbranch has undertaken to restore a 25 pounder Field Gun, providing another **community focal point** for remembering and learning about military service.

We provide a **financial grant** to community groups demonstrating effective service delivery to organisations with a primary goal of public good, including a **school breakfast program.**

We receive World War artifacts which we attempt to restore to descendants of veterans concerned, **celebrating their service** and recognising their dedication.

We receive lots of **positive community feedback from venue hirers** who are able to use a pleasant facility at a reasonable price. We support a diverse range of hirers, from local meetings to choirs, birthday parties and more.

Lathlain Playgroup – Program Logic Model



Lathlain Playgroup – 2024/25 Storyboard

151

Members



3

Major partnerships:
West Coast Eagles
Carlisle Vic Park Toy Library
Child Health Nurse

21

Volunteers

Regular community events to **foster connections** between families in the community.



Affordable birthday party **venue hire** available members.

10

playgroup sessions per week



Provision of a **safe, engaging environment** for children to play and socialise

Lathlain Playgroup – 2024/25 Impact stories

Member feedback

*I attend Monday morning sessions at Lathlain playgroup with my grandson. The playgroup is fabulous, it brings together both children and carers to share in play, talk and activities . As a grandparent the playgroup provides **a great source of connection** and the parents are all so **welcoming and inviting** .*

*The **facilities are fantastic**, providing outstanding play activities and toys for a range of ages - for a grandparent this is particularly important when providing regular care for an active and energetic toddler!*

*The playgroup **fosters a great sense of community** with parents and carers sharing advice, laughter , stories with the children and each other .*

This community also takes collective ownership and care of the space making it always welcoming and inviting.

Such a fantastic use of resource and has saved my Monday morning sanity (and energy) for the last year.

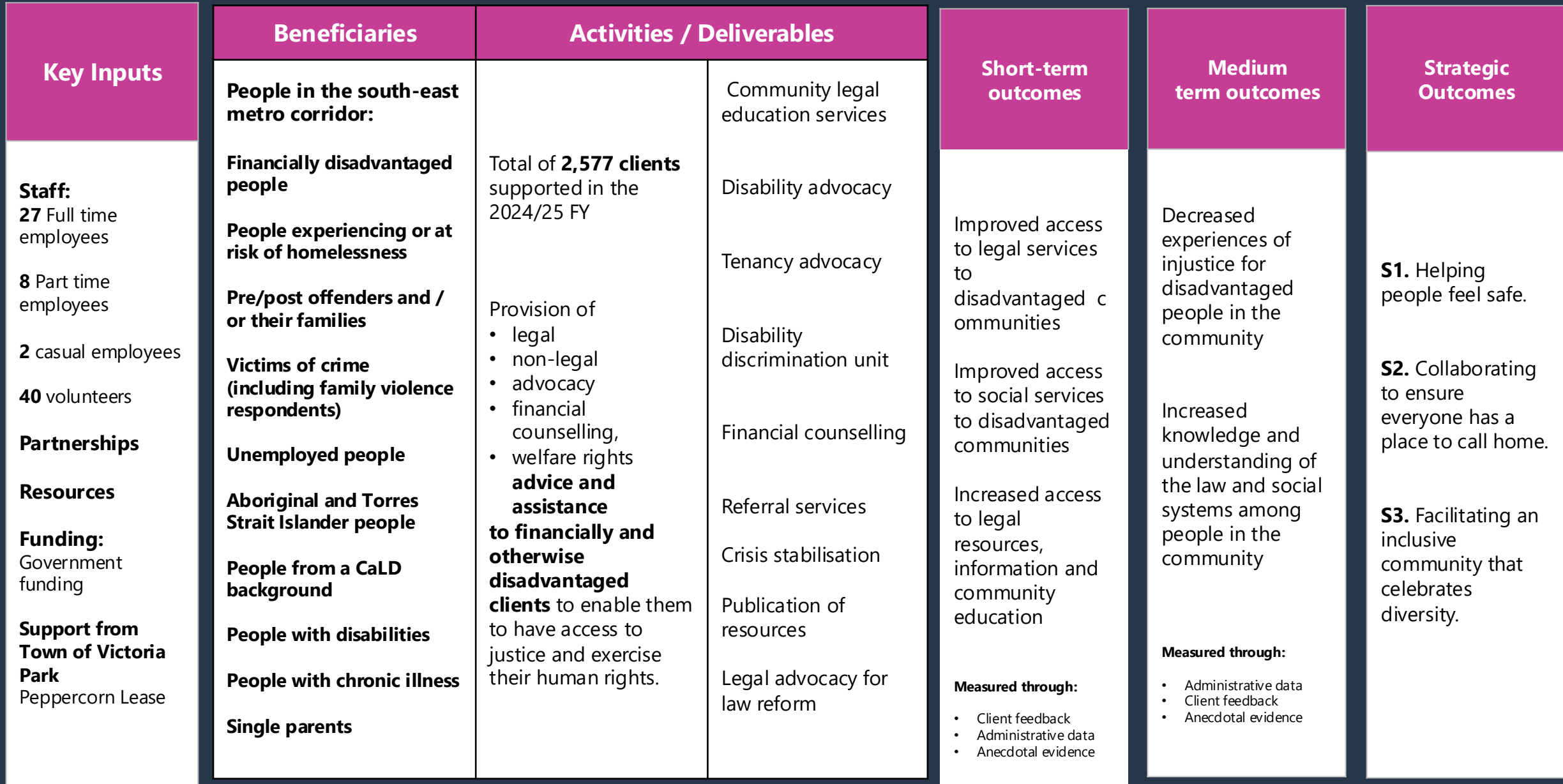
*Lathlain playgroup offers a **safe, fun-filled space** for my children to explore, play and learn. ... As a parent, **I have met new parents** and enjoyed the weekly catchups and chance to **share our parenting successes, challenges and everything in between**. I am pleased that **I have been able to give back** to the playgroup as the Day Leader for our session.*

*It's such a **warm and welcoming space**. The Mum's evening was a great icebreaker and **made it easy to connect with others**.*

*So nice to meet other families in the area with young children at a similar age. The facilities are amazing and **the playgroup community is so welcoming**.*

***We love this playgroup, the events and the surrounding facilities**. It is good in all seasons with undercover areas/air con and its well maintained. The organisation into different day groups meant is never crowded and the space gets looked after as well.*

Sussex Street Community Law Service – Program Logic Model



Sussex St Community Law Service – 2023/24 Storyboard



2,577
clients assisted
+33% from 23/24 FY



37
employees



40
Volunteers
delivering
2,006
volunteer hours



1,412 referrals
301 information sessions
Legal advice and assistance
provided to financially and otherwise disadvantaged clients, including:



People experiencing or at risk of homelessness
Unemployed people



People with disabilities
People with chronic illness



Pre/post offenders and / or their families
Victims of crime (including family violence)



Aboriginal and Torres Strait Islander people



People from Culturally and Linguistically Diverse backgrounds

Sussex St Community Law Service – Client Journey

Leila, 28 & Malachy, 6

"I just want what is best for him"



Background

- Leila is a single mum to Malachy. Malachy is in year 1 and is having lots of trouble with school and his teachers.
- Leila has always suspected that Malachy had ADHD and possibly other cognitive and neurological disabilities.
- Malachy is in the process of having an assessment done but it is taking a long time.

Motivations

- Leila wants to make sure that Malachy's school is able to support him. So far they don't seem to be doing much to help.
- Malachy doesn't want to be in trouble all the time - he can't help a lot of the stuff that the teacher tells him off for.

Leila is struggling to find support for her son Malachy. She feels like his school is stonewalling her and she hates to see him struggle. She feels so powerless. Another parent at school tells her about SSCLS.

Leila contacts SSCLS and is given a disability intake appointment. She tells them about Malachy, his suspected disabilities and her issues with his school.

Leila receives an appointment with a disability advocate who offers support as she finalises Malachy's diagnosis and NDIS application. After she tells the Advocate some of what the school has said, the Advocate advises that she should have a legal appointment to...

Leila meets with the Disability Discrimination lawyer who gives her legal advice on Malachy's rights and the school's legal responsibilities. She feels more confident. The advocate also drops by to say hello and check in at the end of the appointment.

Armed with her legal information, Leila makes another appointment with the school. The email she receives back is quite hostile though, which shakes her confidence - she contacts the Advocate, who agrees to attend with her for support.

Her Advocate attends with her for her meeting - she feels empowered in the legal knowledge she now holds, as well as emotionally supported by the advocate to help negotiate what is best for Malachy.

The Dept of Education agrees to make reasonable adjustments for Malachy at school - the advocate reminds Leila she can come back to SSCLS for anything related to education, or more broadly disability support for Malachy.

At her final appointment the Advocate also provides Leila with information regarding the other services of SSCLS they may be of help - including financial counselling and housing support.